


Product datasheet

Anti-Mesothelin antibody [SP74] ab93620

Recombinant **RabMAb**

★★★★★ [2 Abreviews](#) [3 References](#) [4 Images](#)

Overview

Product name	Anti-Mesothelin antibody [SP74]
Description	Rabbit monoclonal [SP74] to Mesothelin
Host species	Rabbit
Tested applications	Suitable for: WB, IHC-P
Species reactivity	Reacts with: Human Predicted to work with: Pig 
Immunogen	Synthetic peptide within Human Mesothelin aa 550 to the C-terminus (C terminal). The exact sequence is proprietary. Database link: Q13421
Positive control	IHC-P: Human Mesothelioma tissue. WB: BxPC-3, HeLa, PC3 and A549 cell lysate.
General notes	This product is FOR RESEARCH USE ONLY. For commercial use, please contact partnerships@abcam.com.

Properties

Form	Liquid
Storage instructions	Shipped at 4°C. Upon delivery aliquot and store at -20°C. Avoid repeated freeze / thaw cycles.
Storage buffer	pH: 7.60 Preservative: 0.1% Sodium azide Constituents: PBS, 1% BSA
Purity	Protein A/G purified
Purification notes	Purified from TCS by protein A/G.
Clonality	Monoclonal
Clone number	SP74
Isotype	IgG

Applications

The Abpromise guarantee

Our **Abpromise guarantee** covers the use of ab93620 in the following tested applications.

The application notes include recommended starting dilutions; optimal dilutions/concentrations should be determined by the end user.

Application	Abreviews	Notes
WB		Use a concentration of 0.322 µg/ml. Predicted molecular weight: 69 kDa.
IHC-P	★★★★★ (2)	1/100. Perform heat mediated antigen retrieval with citrate buffer pH 6 before commencing with IHC staining protocol.

Target

Function

Membrane-anchored forms may play a role in cellular adhesion.
Megakaryocyte-potentiating factor (MPF) potentiates megakaryocyte colony formation in vitro.

Tissue specificity

Expressed in lung. Expressed at low levels in heart, placenta and kidney. Expressed in mesothelial cells. Highly expressed in mesotheliomas, ovarian cancers, and some squamous cell carcinomas (at protein level).

Involvement in disease

Note=Antibodies against MSLN are detected in patients with mesothelioma and ovarian cancer.

Sequence similarities

Belongs to the mesothelin family.

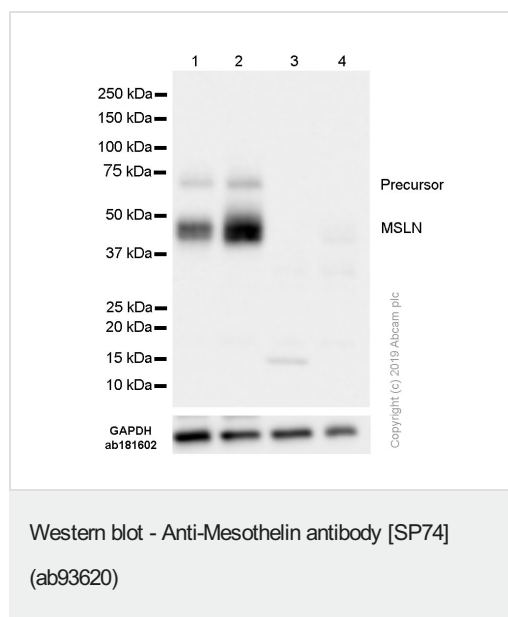
Post-translational modifications

Both MPF and the cleaved form of mesothelin are N-glycosylated.
Proteolytically cleaved by a furin-like convertase to generate megakaryocyte-potentiating factor (MPF), and the cleaved form of mesothelin.

Cellular localization

Secreted and Cell membrane. Golgi apparatus.

Images



All lanes : Anti-Mesothelin antibody [SP74] (ab93620) at 0.322 µg/ml

Lane 1 : HeLa (Human cervix adenocarcinoma epithelial cell) cell lysate

Lane 2 : BxPC-3 (Human pancreas adenocarcinoma epithelial cell) cell lysate

Lane 3 : PC3 (Human prostate adenocarcinoma epithelial cell) cell lysate

Lane 4 : A549 (Human lung carcinoma epithelial cell) cell lysate

Lysates/proteins at 20 µg per lane.

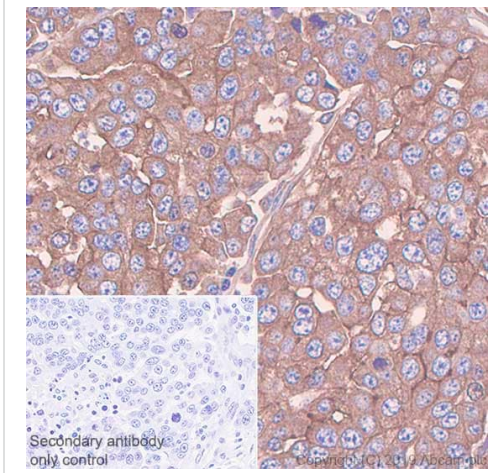
Secondary

All lanes : Goat Anti-Rabbit IgG H&L (HRP) (**ab97051**) at 0.05 µg/ml

Predicted band size: 69 kDa

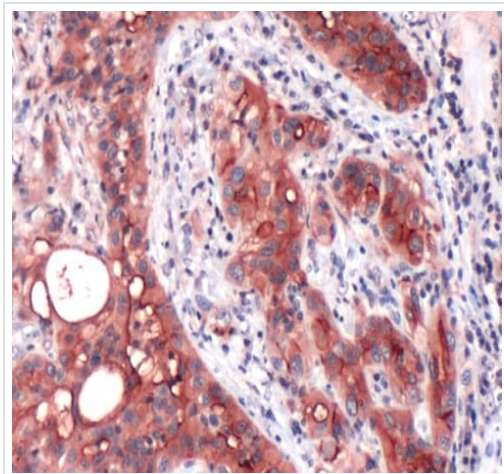
Observed band size: 49,69 kDa

Blocking/Diluting buffer and concentration: 5% NFDM /TBST



Immunohistochemistry (Formalin/PFA-fixed paraffin-embedded sections) analysis of Human mesothelioma tissue sections labeling Mesothelin with Purified ab93620 at 1/100 dilution (1.4 µg/ml). Heat mediated antigen retrieval was performed Heat mediated antigen retrieval with sodium citrate buffer (pH 6.0, epitope retrieval solution 1) for 20mins. Rabbit specific IHC polymer detection kit HRP/DAB (**ab209101**) was used as the secondary antibody. Negative control: PBS instead of the primary antibody. Hematoxylin was used as a counterstain.

Immunohistochemistry (Formalin/PFA-fixed paraffin-embedded sections) - Anti-Mesothelin antibody [SP74] (ab93620)



Human Mesothelioma stained with Anti-Mesothelin antibody [SP74] (ab93620)

Immunohistochemistry (Formalin/PFA-fixed paraffin-embedded sections) - Anti-Mesothelin antibody [SP74] (ab93620)

Why choose a recombinant antibody?



Research with confidence
Consistent and reproducible results



Long-term and scalable supply
Recombinant technology



Success from the first experiment
Confirmed specificity



Ethical standards compliant
Animal-free production

Anti-Mesothelin antibody [SP74] (ab93620)

Please note: All products are "FOR RESEARCH USE ONLY. NOT FOR USE IN DIAGNOSTIC PROCEDURES"

Our Abpromise to you: Quality guaranteed and expert technical support

- Replacement or refund for products not performing as stated on the datasheet
- Valid for 12 months from date of delivery
- Response to your inquiry within 24 hours
- We provide support in Chinese, English, French, German, Japanese and Spanish
- Extensive multi-media technical resources to help you
- We investigate all quality concerns to ensure our products perform to the highest standards

If the product does not perform as described on this datasheet, we will offer a refund or replacement. For full details of the Abpromise, please visit <https://www.abcam.com/abpromise> or contact our technical team.

Terms and conditions

- Guarantee only valid for products bought direct from Abcam or one of our authorized distributors