

# Anti-Mesothelioma antibody [HBME-1] ab2383

[4 References](#) [3 Images](#)

## Overview

<b>Product name</b>	Anti-Mesothelioma antibody [HBME-1]
<b>Description</b>	Mouse monoclonal [HBME-1] to Mesothelioma
<b>Host species</b>	Mouse
<b>Specificity</b>	This antibody reacts with an unknown antigen on microvilli of mesothelioma cells. It stains normal mesothelial cells as well as epithelial mesothelias in a thick membrane pattern due to abundant lung microvilli on the surface of these cells.
<b>Tested applications</b>	<b>Suitable for:</b> IHC-P
<b>Species reactivity</b>	<b>Reacts with:</b> Human
<b>Immunogen</b>	Tissue, cells or virus corresponding to Mesothelioma. Suspension of human mesothelioma cells from patients with malignant epithelial mesothelioma
<b>Positive control</b>	Mesothelioma.
<b>General notes</b>	<p>The Life Science industry has been in the grips of a reproducibility crisis for a number of years. Abcam is leading the way in addressing this with our range of recombinant monoclonal antibodies and knockout edited cell lines for gold-standard validation. Please check that this product meets your needs before purchasing.</p> <p>If you have any questions, special requirements or concerns, please send us an inquiry and/or contact our Support team ahead of purchase. Recommended alternatives for this product can be found below, along with publications, customer reviews and Q&amp;As</p>

## Properties

<b>Form</b>	Liquid
<b>Storage instructions</b>	Shipped at 4°C. Store at +4°C short term (1-2 weeks). Store at -20°C or -80°C. Avoid freeze / thaw cycle.
<b>Storage buffer</b>	<p>pH: 7.3</p> <p>Preservative: 0.05% Sodium azide</p> <p>Constituent: 1% BSA</p>
<b>Purity</b>	Purified IgM
<b>Clonality</b>	Monoclonal
<b>Clone number</b>	HBME-1

<b>Myeloma</b>	unknown
<b>Isotype</b>	IgM
<b>Light chain type</b>	unknown

## Applications

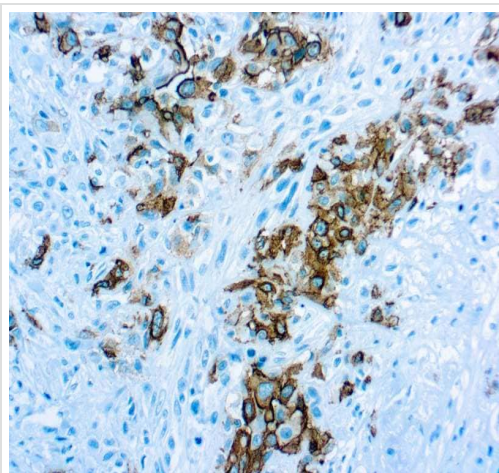
**The Abpromise guarantee** Our **Abpromise guarantee** covers the use of ab2383 in the following tested applications. The application notes include recommended starting dilutions; optimal dilutions/concentrations should be determined by the end user.

Application	Abreviews	Notes
IHC-P		1/15 - 1/25. Perform heat mediated antigen retrieval with citrate buffer pH 6 before commencing with IHC staining protocol. Primary incubation for 30 minutes at room temperature.

## Target

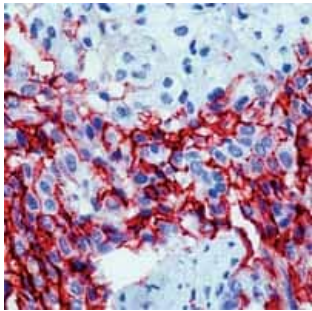
**Relevance** Mesothelioma is a rare form of carcinoma of the mesothelial cells which that normally line the body cavities, including the pleura, peritoneum, pericardium, and testis. It may be localized or diffuse. Most, but not all, cases of pleural malignant mesothelioma are associated with asbestos exposure.

## Images



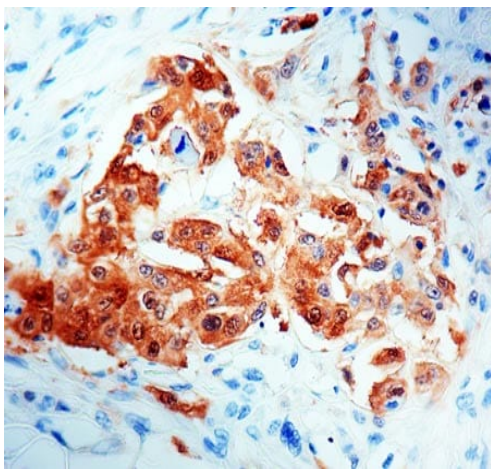
Formalin-fixed, paraffin-embedded human mesothelioma tissue stained for Mesothelioma using ab2383 at 1/15 dilution in immunohistochemical analysis. Antigen retrieval with citrate buffer pH 6.0

Immunohistochemistry (Formalin/PFA-fixed paraffin-embedded sections) - Anti-Mesothelioma antibody [HBME-1] (ab2383)



ab2383 staining human mesothelioma by IHC-P.

Immunohistochemistry (Formalin/PFA-fixed paraffin-embedded sections) - Anti-Mesothelioma antibody [HBME-1] (ab2383)



Immunohistochemical analysis of formalin-fixed, paraffin-embedded Human mesothelioma tissue, staining Mesothelioma with ab2383.

Immunohistochemistry (Formalin/PFA-fixed paraffin-embedded sections) - Anti-Mesothelioma antibody [HBME-1] (ab2383)

**Please note:** All products are "FOR RESEARCH USE ONLY. NOT FOR USE IN DIAGNOSTIC PROCEDURES"

### Our Abpromise to you: Quality guaranteed and expert technical support

- Replacement or refund for products not performing as stated on the datasheet
- Valid for 12 months from date of delivery
- Response to your inquiry within 24 hours
- We provide support in Chinese, English, French, German, Japanese and Spanish
- Extensive multi-media technical resources to help you
- We investigate all quality concerns to ensure our products perform to the highest standards

If the product does not perform as described on this datasheet, we will offer a refund or replacement. For full details of the Abpromise, please visit <https://www.abcam.com/abpromise> or contact our technical team.

#### **Terms and conditions**

---

- Guarantee only valid for products bought direct from Abcam or one of our authorized distributors