

## Product datasheet

# Anti-Metabotropic Glutamate Receptor 2/MGLUR2 + Metabotropic Glutamate Receptor 3/MGLUR3 antibody ab153670

[1 Image](#)

### Overview

---

<b>Product name</b>	Anti-Metabotropic Glutamate Receptor 2/MGLUR2 + Metabotropic Glutamate Receptor 3/MGLUR3 antibody
<b>Description</b>	Chicken polyclonal to Metabotropic Glutamate Receptor 2/MGLUR2 + Metabotropic Glutamate Receptor 3/MGLUR3
<b>Host species</b>	Chicken
<b>Tested applications</b>	<b>Suitable for:</b> IHC-FoFr
<b>Species reactivity</b>	<b>Reacts with:</b> Mouse
<b>Immunogen</b>	<b>This product was produced with the following immunogens:</b> Synthetic peptide corresponding to Human Metabotropic Glutamate Receptor 2/MGLUR2 conjugated to keyhole limpet haemocyanin. Database link: <a href="#">Q14416.2</a>  Synthetic peptide conjugated to keyhole limpet haemocyanin. Database link: <a href="#">Q14B12.2</a>

### General notes

Do not freeze this antibody unless you want to store it for a long period of time.

The Life Science industry has been in the grips of a reproducibility crisis for a number of years. Abcam is leading the way in addressing this with our range of recombinant monoclonal antibodies and knockout edited cell lines for gold-standard validation. Please check that this product meets your needs before purchasing.

If you have any questions, special requirements or concerns, please send us an inquiry and/or contact our Support team ahead of purchase. Recommended alternatives for this product can be found below, along with publications, customer reviews and Q&As

### Properties

---

<b>Form</b>	Liquid
<b>Storage instructions</b>	Shipped at 4°C. Store at +4°C. Store In the Dark.
<b>Storage buffer</b>	pH: 7 Preservative: 0.02% Sodium azide

	Constituent: 99% PBS
<b>Purity</b>	Immunogen affinity purified
<b>Purification notes</b>	ab153670 was filter sterilized.
<b>Clonality</b>	Polyclonal
<b>Isotype</b>	IgY

## Applications

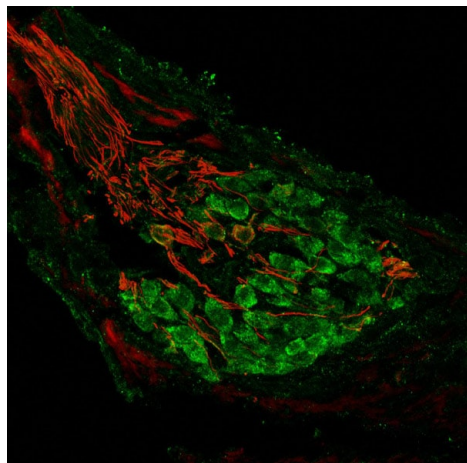
**The Abpromise guarantee** Our **Abpromise guarantee** covers the use of ab153670 in the following tested applications. The application notes include recommended starting dilutions; optimal dilutions/concentrations should be determined by the end user.

Application	Abreviews	Notes
IHC-FoFr		1/1000 - 1/2000. Use 2% paraformaldehyde-fixed tissues.

## Target

**Cellular localization** Metabotropic Glutamate Receptor 2/MGLUR2: Cell membrane. Metabotropic Glutamate Receptor 2/MGLUR2+Metabotropic Glutamate Receptor 3/MGLUR3: Metabotropic Glutamate Receptor 2/MGLUR2: Cell membrane. Metabotropic Glutamate Receptor 3/MGLUR3: Cell membrane.

## Images



Immunohistochemistry (Frozen sections) analysis of mouse e19 cochlear ganglion labelling Metabotropic Glutamate Receptor 2/MGLUR2/Metabotropic Glutamate Receptor 3/MGLUR3 (green) with ab153670. Tissue was fixed with 3% paraformaldehyde. Red - rabbit anti-MAP2.

Immunohistochemistry (PFA perfusion fixed frozen sections) - Anti-Metabotropic Glutamate Receptor 2/MGLUR2 + Metabotropic Glutamate Receptor 3/MGLUR3 antibody (ab153670)

**Please note:** All products are "FOR RESEARCH USE ONLY. NOT FOR USE IN DIAGNOSTIC PROCEDURES"

## **Our Abpromise to you: Quality guaranteed and expert technical support**

---

- Replacement or refund for products not performing as stated on the datasheet
- Valid for 12 months from date of delivery
- Response to your inquiry within 24 hours
  
- We provide support in Chinese, English, French, German, Japanese and Spanish
- Extensive multi-media technical resources to help you
- We investigate all quality concerns to ensure our products perform to the highest standards

If the product does not perform as described on this datasheet, we will offer a refund or replacement. For full details of the Abpromise, please visit <https://www.abcam.com/abpromise> or contact our technical team.

## **Terms and conditions**

---

- Guarantee only valid for products bought direct from Abcam or one of our authorized distributors