

Product datasheet

Anti-Metabotropic Glutamate Receptor 4/MGLUR4 antibody ab53088

★★★★★ [18 Abreviews](#) [10 References](#) [3 Images](#)

Overview

Product name	Anti-Metabotropic Glutamate Receptor 4/MGLUR4 antibody
Description	Rabbit polyclonal to Metabotropic Glutamate Receptor 4/MGLUR4
Host species	Rabbit
Tested applications	Suitable for: ELISA, IHC-Fr, ICC/IF, IHC-P, WB
Species reactivity	Reacts with: Mouse, Rat, Chicken, Cat, Human
Immunogen	Synthetic peptide corresponding to Human Metabotropic Glutamate Receptor 4/MGLUR4 (C terminal). Database link: Q14833
General notes	<p>The Life Science industry has been in the grips of a reproducibility crisis for a number of years. Abcam is leading the way in addressing this with our range of recombinant monoclonal antibodies and knockout edited cell lines for gold-standard validation. Please check that this product meets your needs before purchasing.</p> <p>If you have any questions, special requirements or concerns, please send us an inquiry and/or contact our Support team ahead of purchase. Recommended alternatives for this product can be found below, along with publications, customer reviews and Q&As</p>

Properties

Form	Liquid
Storage instructions	Shipped at 4°C. Store at -20°C. Stable for 12 months at -20°C.
Storage buffer	pH: 7.40 Preservative: 0.02% Sodium azide Constituents: 0.87% Sodium chloride, 50% Glycerol (glycerin, glycerine), PBS
	Without Mg+2 and Ca+2
Purity	Immunogen affinity purified
Clonality	Polyclonal
Isotype	IgG

Applications

The Abpromise guarantee

Our **Abpromise guarantee** covers the use of ab53088 in the following tested applications.

The application notes include recommended starting dilutions; optimal dilutions/concentrations should be determined by the end user.

Application	Abreviews	Notes
ELISA		Use at an assay dependent concentration.
IHC-Fr	★★★★★ (5)	Use at an assay dependent concentration.
ICC/IF		Use a concentration of 5 µg/ml.
IHC-P	★★★★★ (4)	Use a concentration of 2 µg/ml. Perform heat mediated antigen retrieval before commencing with IHC staining protocol.
WB	★★★★★ (3)	1/500 - 1/1000. Detects a band of approximately 102 kDa (predicted molecular weight: 102 kDa).

Target

Function

Receptor for glutamate. The activity of this receptor is mediated by a G-protein that inhibits adenylate cyclase activity.

Tissue specificity

Strongly expressed in the cerebellum. Expressed at low levels in hippocampus, hypothalamus and thalamus. No expression detected in liver.

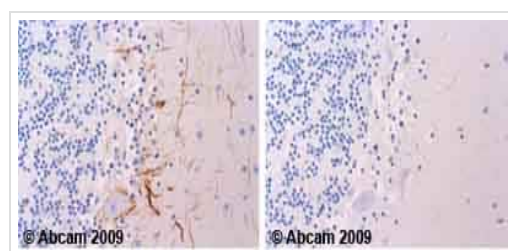
Sequence similarities

Belongs to the G-protein coupled receptor 3 family.

Cellular localization

Cell membrane.

Images



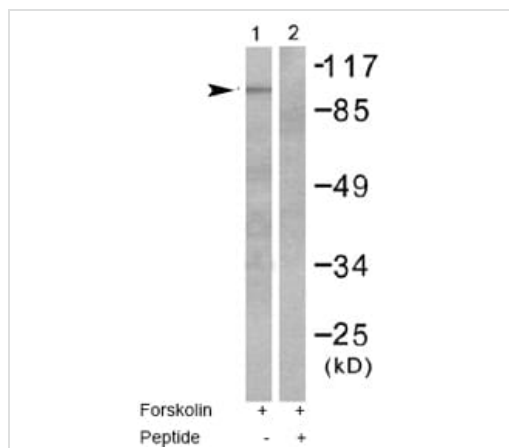
Immunohistochemistry (Formalin/PFA-fixed paraffin-embedded sections) - Anti-Metabotropic Glutamate Receptor 4/MGLUR4 antibody (ab53088)

Ab53088 staining Human cerebellum. Staining is localised to the cell membrane.

Left panel: with primary antibody at 2 µg/ml. Right panel: isotype control.

Sections were stained using an automated system DAKO Autostainer Plus , at room temperature. Sections were rehydrated and antigen retrieved with the DAKO 3-in-1 antigen retrieval buffer EDTA pH 9.0 in a DAKO PT Link. Slides were peroxidase blocked in 3% H₂O₂ in methanol for 10 minutes. They were then blocked with Dako Protein block for 10 minutes (containing casein 0.25% in PBS) then incubated with primary antibody for 20 minutes and detected with Dako Envision Flex amplification kit for 30 minutes. Colorimetric detection was completed with diaminobenzidine for 5 minutes. Slides were counterstained with Haematoxylin and coverslipped under DePeX. Please note that for manual staining we recommend to optimize the primary antibody concentration and

incubation time (overnight incubation), and amplification may be required.



Western blot - Anti-Metabotropic Glutamate Receptor 4/MGLUR4 antibody (ab53088)

Immunocytochemistry/ Immunofluorescence - Anti-Metabotropic Glutamate Receptor 4/MGLUR4 antibody (ab53088)

All lanes : Anti-Metabotropic Glutamate Receptor 4/MGLUR4 antibody (ab53088) at 1/500 dilution

Lane 1 : 293 cell extracts, treated with Forskolin (40nM, 30mins)

Lane 2 : 293 cell extracts, treated with Forskolin (40nM, 30mins) with peptide

Predicted band size: 102 kDa

Observed band size: 102 kDa

ICC/IF image of ab53088 stained HepG2 cells. The cells were 100% methanol fixed (5 min) and then incubated in 1%BSA / 10% normal goat serum / 0.3M glycine in 0.1% PBS-Tween for 1h to permeabilise the cells and block non-specific protein-protein interactions. The cells were then incubated with the antibody (ab53088, 5µg/ml) overnight at +4°C. The secondary antibody (green) was Alexa Fluor® 488 goat anti-rabbit IgG (H+L) used at a 1/1000 dilution for 1h. Alexa Fluor® 594 WGA was used to label plasma membranes (red) at a 1/200 dilution for 1h. DAPI was used to stain the cell nuclei (blue) at a concentration of 1.43µM.

Please note: All products are "FOR RESEARCH USE ONLY. NOT FOR USE IN DIAGNOSTIC PROCEDURES"

Our Abpromise to you: Quality guaranteed and expert technical support

- Replacement or refund for products not performing as stated on the datasheet
- Valid for 12 months from date of delivery
- Response to your inquiry within 24 hours
- We provide support in Chinese, English, French, German, Japanese and Spanish
- Extensive multi-media technical resources to help you
- We investigate all quality concerns to ensure our products perform to the highest standards

If the product does not perform as described on this datasheet, we will offer a refund or replacement. For full details of the Abpromise, please visit <https://www.abcam.com/abpromise> or contact our technical team.

Terms and conditions

- Guarantee only valid for products bought direct from Abcam or one of our authorized distributors