


Product datasheet

Anti-Metabotropic Glutamate Receptor 5 antibody ab27190

★★★★★ [1 Abreviews](#) [8 References](#) [1 Image](#)

Overview

Product name	Anti-Metabotropic Glutamate Receptor 5 antibody
Description	Rabbit polyclonal to Metabotropic Glutamate Receptor 5
Host species	Rabbit
Tested applications	Suitable for: IHC-P Unsuitable for: ICC
Species reactivity	Reacts with: Human Predicted to work with: Rabbit 
Immunogen	Synthetic peptide within Human Metabotropic Glutamate Receptor 5 aa 1150 to the C-terminus. The exact sequence is proprietary. Database link: P41594
Positive control	IHC: human brain tissue.
General notes	<p>This product is FOR RESEARCH USE ONLY. For commercial use, please contact partnerships@abcam.com.</p> <p>The Life Science industry has been in the grips of a reproducibility crisis for a number of years. Abcam is leading the way in addressing this with our range of recombinant monoclonal antibodies and knockout edited cell lines for gold-standard validation. Please check that this product meets your needs before purchasing.</p> <p>If you have any questions, special requirements or concerns, please send us an inquiry and/or contact our Support team ahead of purchase. Recommended alternatives for this product can be found below, along with publications, customer reviews and Q&As</p>

Properties

Form	Liquid
Storage instructions	Shipped at 4°C. Upon delivery aliquot and store at -20°C. Avoid freeze / thaw cycles.
Storage buffer	pH: 7.60 Preservative: 0.1% Sodium azide Constituents: PBS, 1% BSA
Purity	Immunogen affinity purified

Purification notes	This antibody is an affinity purified IgG.
Clonality	Polyclonal
Isotype	IgG

Applications

The Abpromise guarantee Our **Abpromise guarantee** covers the use of ab27190 in the following tested applications. The application notes include recommended starting dilutions; optimal dilutions/concentrations should be determined by the end user.

Application	Abreviews	Notes
IHC-P		1/50. Perform heat mediated antigen retrieval before commencing with IHC staining protocol.

Application notes Is unsuitable for ICC.

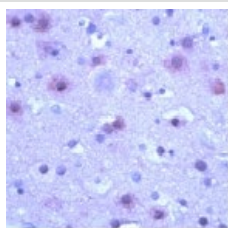
Target

Function G-protein coupled receptor for glutamate. Ligand binding causes a conformation change that triggers signaling via guanine nucleotide-binding proteins (G proteins) and modulates the activity of down-stream effectors. Signaling activates a phosphatidylinositol-calcium second messenger system and generates a calcium-activated chloride current. Plays an important role in the regulation of synaptic plasticity and the modulation of the neural network activity.

Sequence similarities Belongs to the G-protein coupled receptor 3 family.

Cellular localization Cell membrane.

Images



Ab27190, at a dilution of 1/50, staining mGluR5 in Paraffin embedded formalin fixed human brain tissue section.

Immunohistochemistry (Formalin/PFA-fixed paraffin-embedded sections) - Anti-Metabotropic Glutamate Receptor 5 antibody (ab27190)

Please note: All products are "FOR RESEARCH USE ONLY. NOT FOR USE IN DIAGNOSTIC PROCEDURES"

Our Abpromise to you: Quality guaranteed and expert technical support

- Replacement or refund for products not performing as stated on the datasheet

- Valid for 12 months from date of delivery
- Response to your inquiry within 24 hours

- We provide support in Chinese, English, French, German, Japanese and Spanish
- Extensive multi-media technical resources to help you
- We investigate all quality concerns to ensure our products perform to the highest standards

If the product does not perform as described on this datasheet, we will offer a refund or replacement. For full details of the Abpromise, please visit <https://www.abcam.com/abpromise> or contact our technical team.

Terms and conditions

- Guarantee only valid for products bought direct from Abcam or one of our authorized distributors