


Product datasheet

Anti-Metabotropic Glutamate Receptor 5 antibody ab53090

★★★★★ [16 Abreviews](#) [16 References](#) [2 Images](#)

Overview

Product name	Anti-Metabotropic Glutamate Receptor 5 antibody
Description	Rabbit polyclonal to Metabotropic Glutamate Receptor 5
Host species	Rabbit
Tested applications	Suitable for: IHC-P, WB
Species reactivity	Reacts with: Mouse, Human Predicted to work with: Rat 
Immunogen	N-terminal synthetic peptide derived from human Metabotropic Glutamate Receptor 5.
Positive control	WB: Mouse brain extracts. IHC-P: Human brain tissue.
General notes	<p>The Life Science industry has been in the grips of a reproducibility crisis for a number of years. Abcam is leading the way in addressing this with our range of recombinant monoclonal antibodies and knockout edited cell lines for gold-standard validation. Please check that this product meets your needs before purchasing.</p> <p>If you have any questions, special requirements or concerns, please send us an inquiry and/or contact our Support team ahead of purchase. Recommended alternatives for this product can be found below, along with publications, customer reviews and Q&As</p>

Properties

Form	Liquid
Storage instructions	Shipped at 4°C. Store at -20°C. Stable for 12 months at -20°C.
Storage buffer	pH: 7.40 Preservative: 0.02% Sodium azide Constituents: 50% Glycerol (glycerin, glycerine), 0.87% Sodium chloride, PBS
Purity	Immunogen affinity purified
Purification notes	ab53090 was affinity purified from rabbit antiserum by affinity chromatography using epitope specific immunogen.
Clonality	Polyclonal
Isotype	IgG

Applications

The Abpromise guarantee

Our **Abpromise guarantee** covers the use of ab53090 in the following tested applications.

The application notes include recommended starting dilutions; optimal dilutions/concentrations should be determined by the end user.

Application	Abreviews	Notes
IHC-P	★★★★★ (8)	1/50 - 1/100.
WB	★★★☆☆ (1)	1/500 - 1/1000. Predicted molecular weight: 132 kDa.

Target

Function

G-protein coupled receptor for glutamate. Ligand binding causes a conformation change that triggers signaling via guanine nucleotide-binding proteins (G proteins) and modulates the activity of down-stream effectors. Signaling activates a phosphatidylinositol-calcium second messenger system and generates a calcium-activated chloride current. Plays an important role in the regulation of synaptic plasticity and the modulation of the neural network activity.

Sequence similarities

Belongs to the G-protein coupled receptor 3 family.

Cellular localization

Cell membrane.

Images



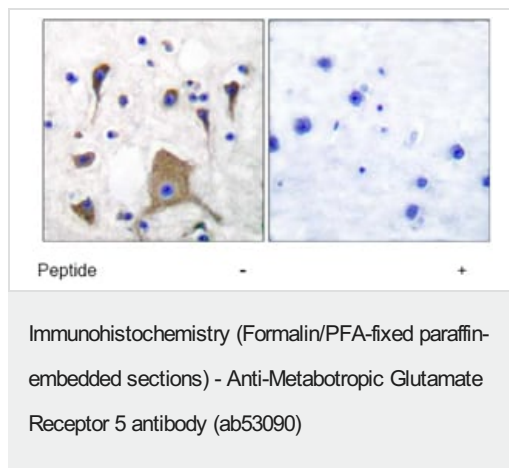
All lanes : Anti-Metabotropic Glutamate Receptor 5 antibody (ab53090) at 1/300 dilution

Lane 1 : Mouse brain extracts

Lane 2 : Mouse brain extracts with blocking peptide

Predicted band size: 132 kDa

Observed band size: 100 kDa



Immunohistochemical analysis of paraffin embedded human brain tissue using ab53090 at 1/50 dilution, in the presence (right) and absence (left) of blocking peptide.

Please note: All products are "FOR RESEARCH USE ONLY. NOT FOR USE IN DIAGNOSTIC PROCEDURES"

Our Abpromise to you: Quality guaranteed and expert technical support

- Replacement or refund for products not performing as stated on the datasheet
- Valid for 12 months from date of delivery
- Response to your inquiry within 24 hours
- We provide support in Chinese, English, French, German, Japanese and Spanish
- Extensive multi-media technical resources to help you
- We investigate all quality concerns to ensure our products perform to the highest standards

If the product does not perform as described on this datasheet, we will offer a refund or replacement. For full details of the Abpromise, please visit <https://www.abcam.com/abpromise> or contact our technical team.

Terms and conditions

- Guarantee only valid for products bought direct from Abcam or one of our authorized distributors