

Product datasheet

Anti-Metabotropic Glutamate Receptor 7/MGLUR7 antibody ab85343

[1 Image](#)

Overview

Product name	Anti-Metabotropic Glutamate Receptor 7/MGLUR7 antibody
Description	Goat polyclonal to Metabotropic Glutamate Receptor 7/MGLUR7
Host species	Goat
Specificity	ab85343 is expected to recognize both reported isoforms (NP_000835.1; NP_870989.1).
Tested applications	Suitable for: WB
Species reactivity	Reacts with: Human
Immunogen	Synthetic peptide. This information is proprietary to Abcam and/or its suppliers.
Positive control	Human Brain (Cerebellum), Mouse and Rat Brain lysates.
General notes	<p>The Life Science industry has been in the grips of a reproducibility crisis for a number of years. Abcam is leading the way in addressing this with our range of recombinant monoclonal antibodies and knockout edited cell lines for gold-standard validation. Please check that this product meets your needs before purchasing.</p> <p>If you have any questions, special requirements or concerns, please send us an inquiry and/or contact our Support team ahead of purchase. Recommended alternatives for this product can be found below, along with publications, customer reviews and Q&As</p>

Properties

Form	Liquid
Storage instructions	Shipped at 4°C. Upon delivery aliquot and store at -20°C. Avoid repeated freeze / thaw cycles.
Storage buffer	<p>pH: 7.30</p> <p>Preservative: 0.02% Sodium azide</p> <p>Constituents: 0.5% BSA, Tris buffered saline</p>
Purity	Immunogen affinity purified
Purification notes	ab85343 was purified from goat serum by ammonium sulphate precipitation followed by antigen affinity chromatography using the immunizing peptide.
Clonality	Polyclonal
Isotype	IgG

Applications

The Abpromise guarantee

Our **Abpromise guarantee** covers the use of ab85343 in the following tested applications.

The application notes include recommended starting dilutions; optimal dilutions/concentrations should be determined by the end user.

Application	Abreviews	Notes
WB		Use a concentration of 0.5 - 2 µg/ml. Detects a band of approximately 102 kDa (predicted molecular weight: 102 kDa). 1 hour primary incubation is recommended for this product.

Target

Function

Receptor for glutamate. The activity of this receptor is mediated by a G-protein that inhibits adenylate cyclase activity.

Tissue specificity

Expressed in many areas of the brain, especially in the cerebral cortex, hippocampus, and cerebellum. Expression of GRM7 isoforms in non-neuronal tissues appears to be restricted to isoform 3 and isoform 4.

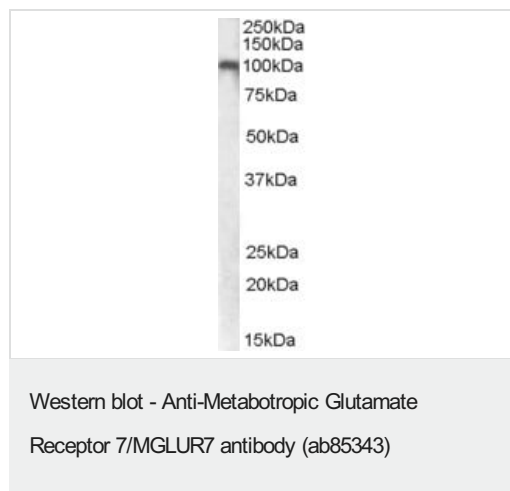
Sequence similarities

Belongs to the G-protein coupled receptor 3 family.

Cellular localization

Cell membrane.

Images



Anti-Metabotropic Glutamate Receptor 7/MGLUR7 antibody (ab85343) at 0.5 µg/ml + Human Cerebellum lysate at 35 µg

Predicted band size: 102 kDa

Observed band size: 102 kDa

Please note: All products are "FOR RESEARCH USE ONLY. NOT FOR USE IN DIAGNOSTIC PROCEDURES"

Our Abpromise to you: Quality guaranteed and expert technical support

- Replacement or refund for products not performing as stated on the datasheet
- Valid for 12 months from date of delivery
- Response to your inquiry within 24 hours
- We provide support in Chinese, English, French, German, Japanese and Spanish

- Extensive multi-media technical resources to help you
- We investigate all quality concerns to ensure our products perform to the highest standards

If the product does not perform as described on this datasheet, we will offer a refund or replacement. For full details of the Abpromise, please visit <https://www.abcam.com/abpromise> or contact our technical team.

Terms and conditions

- Guarantee only valid for products bought direct from Abcam or one of our authorized distributors