



Anti-Metnase antibody ab3823

[5 References](#) [1 Image](#)

Overview

Product name	Anti-Metnase antibody
Description	Goat polyclonal to Metnase
Host species	Goat
Tested applications	Suitable for: WB
Species reactivity	Reacts with: Human
Immunogen	Synthetic peptide corresponding to Human Metnase aa 650 to the C-terminus (C terminal). Database link: NP_006506.3  Run BLAST with  Run BLAST with
Positive control	Daudi lysate.
General notes	<p>The Life Science industry has been in the grips of a reproducibility crisis for a number of years. Abcam is leading the way in addressing this with our range of recombinant monoclonal antibodies and knockout edited cell lines for gold-standard validation. Please check that this product meets your needs before purchasing.</p> <p>If you have any questions, special requirements or concerns, please send us an inquiry and/or contact our Support team ahead of purchase. Recommended alternatives for this product can be found below, along with publications, customer reviews and Q&As</p>

Properties

Form	Liquid
Storage instructions	Shipped at 4°C. Upon delivery aliquot and store at -20°C or -80°C. Avoid repeated freeze / thaw cycles.
Storage buffer	pH: 7.30 Preservative: 0.02% Sodium azide Constituents: 0.5% Tris, 0.5% BSA
Purity	Immunogen affinity purified
Purification notes	Purified from goat serum by ammonium sulphate precipitation followed by antigen affinity chromatography using the immunizing peptide.
Clonality	Polyclonal
Isotype	IgG

Applications

The Abpromise guarantee

Our **Abpromise guarantee** covers the use of ab3823 in the following tested applications.

The application notes include recommended starting dilutions; optimal dilutions/concentrations should be determined by the end user.

Application	Abreviews	Notes
WB		Use a concentration of 1 - 3 µg/ml. Detects a band of approximately 70-75 kDa. A 1 hour primary incubation is recommended for this product. Approx 70 - 75 kDa band seen in Daudi lysate.

Target

Function

Histone methyltransferase that methylates 'Lys-4' and 'Lys-36' of histone H3, 2 specific tags for epigenetic transcriptional activation. Specifically mediates dimethylation of H3 'Lys-36'. Has sequence-specific DNA-binding activity and recognizes the 19-mer core of the 5'-terminal inverted repeats (TIRs) of the Hsmar1 element. Has DNA nicking activity. Has in vivo end joining activity and may mediate genomic integration of foreign DNA.

Tissue specificity

Widely expressed, with highest expression in placenta and ovary and lowest expression in skeletal muscle.

Sequence similarities

In the N-terminal section; belongs to the histone-lysine methyltransferase family.
In the C-terminal section; belongs to the mariner transposase family.
Contains 1 post-SET domain.
Contains 1 pre-SET domain.
Contains 1 SET domain.

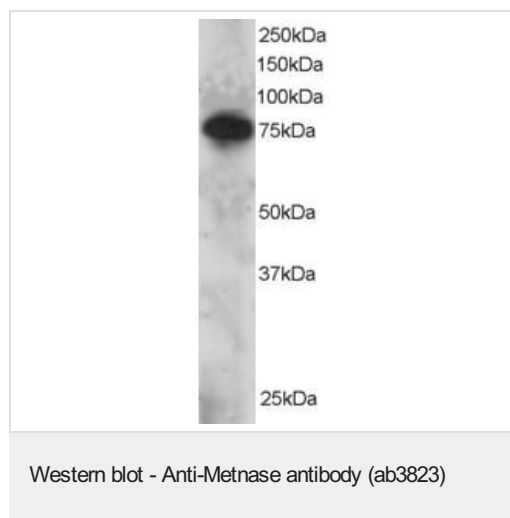
Domain

The mariner transposase Hsmar1 region mediates DNA-binding. It has no transposase activity because the active site contains an Asn in position 610 instead of a Asp residue.

Cellular localization

Nucleus. Chromosome.

Images



ab3823 staining (2µg/ml) of Daudi lysate (RIPA buffer, 30µg total protein per lane). Primary incubated for 12 hours. Detected by western blot using chemiluminescence. ab3823 staining (2µg/ml) of Daudi lysate (RIPA buffer, 30µg total protein per lane). Primary incubated for 12 hours. Detected by western blot using chemiluminescence.

Please note: All products are "FOR RESEARCH USE ONLY. NOT FOR USE IN DIAGNOSTIC PROCEDURES"

Our Abpromise to you: Quality guaranteed and expert technical support

- Replacement or refund for products not performing as stated on the datasheet
- Valid for 12 months from date of delivery
- Response to your inquiry within 24 hours

- We provide support in Chinese, English, French, German, Japanese and Spanish
- Extensive multi-media technical resources to help you
- We investigate all quality concerns to ensure our products perform to the highest standards

If the product does not perform as described on this datasheet, we will offer a refund or replacement. For full details of the Abpromise, please visit <https://www.abcam.com/abpromise> or contact our technical team.

Terms and conditions

- Guarantee only valid for products bought direct from Abcam or one of our authorized distributors