

Product datasheet

Anti-MetRS/MARS antibody [EPR9873(B)] ab137105

Recombinant RabMAb

[1 References](#) [3 Images](#)

Overview

Product name	Anti-MetRS/MARS antibody [EPR9873(B)]
Description	Rabbit monoclonal [EPR9873(B)] to MetRS/MARS
Host species	Rabbit
Tested applications	Suitable for: ICC/IF, WB Unsuitable for: IHC-P or IP
Species reactivity	Reacts with: Human
Immunogen	Synthetic peptide within Human MetRS/MARS aa 800-900. The exact sequence is proprietary.
Positive control	HepG2, HeLa, SW480 and Caco-2 cell lysates; HepG2 cells.
General notes	<p>This product is a recombinant monoclonal antibody, which offers several advantages including:</p> <ul style="list-style-type: none"> - High batch-to-batch consistency and reproducibility - Improved sensitivity and specificity - Long-term security of supply - Animal-free production <p>For more information see here.</p> <p>Our RabMAb[®] technology is a patented hybridoma-based technology for making rabbit monoclonal antibodies. For details on our patents, please refer to RabMAb[®] patents.</p> <p>Mouse, Rat: We have preliminary internal testing data to indicate this antibody may not react with these species. Please contact us for more information.</p>

Properties

Form	Liquid
Storage instructions	Shipped at 4°C. Store at -20°C.
Storage buffer	pH: 7.2 Preservative: 0.01% Sodium azide Constituents: 9% PBS, 40% Glycerol (glycerin, glycerine), 0.05% BSA, 50% Tissue culture supernatant
Purity	Protein A purified
Clonality	Monoclonal

Clone number EPR9873(B)

Isotype IgG

Applications

The Abpromise guarantee Our **Abpromise guarantee** covers the use of ab137105 in the following tested applications. The application notes include recommended starting dilutions; optimal dilutions/concentrations should be determined by the end user.

Application	Abreviews	Notes
ICC/IF		1/250 - 1/500.
WB		1/1000 - 1/10000. Predicted molecular weight: 101 kDa.

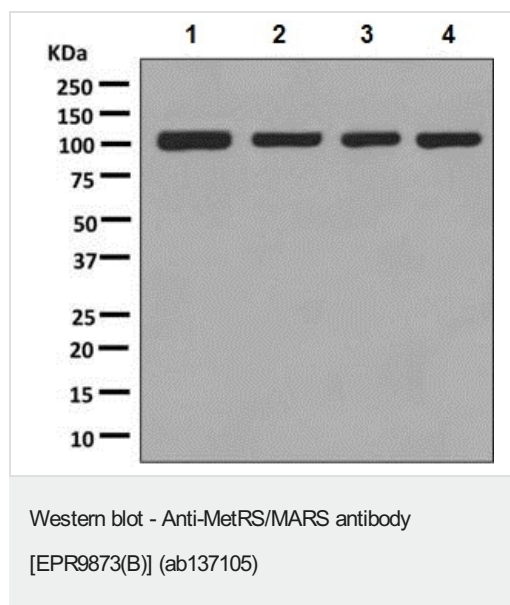
Application notes Is unsuitable for IHC-P or IP.

Target

Sequence similarities Belongs to the class-I aminoacyl-tRNA synthetase family.
Contains 1 GST C-terminal domain.
Contains 1 WHEP-TRS domain.

Cellular localization Cytoplasm.

Images



All lanes : Anti-MetRS/MARS antibody [EPR9873(B)] (ab137105) at 1/1000 dilution

Lane 1 : HepG2 cell lysate

Lane 2 : HeLa cell lysate

Lane 3 : SW480 cell lysate

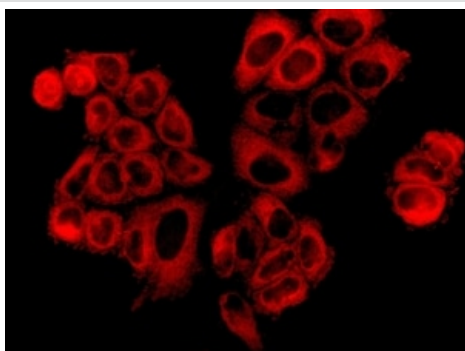
Lane 4 : Caco-2 cell lysate

Lysates/proteins at 10 µg per lane.

Secondary

All lanes : HRP-labelled Goat anti-Rabbit at 1/2000 dilution

Predicted band size: 101 kDa



Immunofluorescent analysis of HepG2 cells labelling MetRS/MARS with ab137105 at 1/250 dilution.

Immunocytochemistry/ Immunofluorescence - Anti-MetRS/MARS antibody [EPR9873(B)] (ab137105)

Why choose a recombinant antibody?



Research with confidence
Consistent and reproducible results



Long-term and scalable supply
Recombinant technology



Success from the first experiment
Confirmed specificity



Ethical standards compliant
Animal-free production

Anti-MetRS/MARS antibody [EPR9873(B)]
(ab137105)

Please note: All products are "FOR RESEARCH USE ONLY. NOT FOR USE IN DIAGNOSTIC PROCEDURES"

Our Abpromise to you: Quality guaranteed and expert technical support

- Replacement or refund for products not performing as stated on the datasheet
- Valid for 12 months from date of delivery
- Response to your inquiry within 24 hours
- We provide support in Chinese, English, French, German, Japanese and Spanish
- Extensive multi-media technical resources to help you
- We investigate all quality concerns to ensure our products perform to the highest standards

If the product does not perform as described on this datasheet, we will offer a refund or replacement. For full details of the Abpromise, please visit <https://www.abcam.com/abpromise> or contact our technical team.

Terms and conditions

- Guarantee only valid for products bought direct from Abcam or one of our authorized distributors