


Anti-METTL1 antibody ab157097

[2 References](#) [1 Image](#)

Overview

Product name	Anti-METTL1 antibody
Description	Rabbit polyclonal to METTL1
Host species	Rabbit
Tested applications	Suitable for: WB
Species reactivity	Reacts with: Mouse, Human Predicted to work with: Chimpanzee, Cynomolgus monkey, Rhesus monkey, Gorilla, Opossum, Chinese hamster, Common marmoset, Orangutan, Platypus 
Immunogen	Synthetic peptide corresponding to a region within amino acids 175-225 of Human METTL1 (NP_005362.3).
Positive control	293T, HeLa, Jurkat, and TCMK-1 whole cell lysates
General notes	<p>The Life Science industry has been in the grips of a reproducibility crisis for a number of years. Abcam is leading the way in addressing this with our range of recombinant monoclonal antibodies and knockout edited cell lines for gold-standard validation. Please check that this product meets your needs before purchasing.</p> <p>If you have any questions, special requirements or concerns, please send us an inquiry and/or contact our Support team ahead of purchase. Recommended alternatives for this product can be found below, along with publications, customer reviews and Q&As</p>

Properties

Form	Liquid
Storage instructions	Shipped at 4°C. Store at +4°C.
Storage buffer	pH: 7 Preservative: 0.09% Sodium azide Constituent: 99% Tris citrate/phosphate
Purity	pH 7-8 Immunogen affinity purified
Clonality	Polyclonal
Isotype	IgG

Applications

The Abpromise guarantee

Our **Abpromise guarantee** covers the use of ab157097 in the following tested applications.

The application notes include recommended starting dilutions; optimal dilutions/concentrations should be determined by the end user.

Application	Abreviews	Notes
WB		1/1000 - 1/5000. Predicted molecular weight: 31 kDa.

Target

Function

Catalyzes the formation of N(7)-methylguanine at position 46 (m7G46) in tRNA.

Tissue specificity

Ubiquitous.

Pathway

tRNA modification; N(7)-methylguanine-tRNA biosynthesis.

Sequence similarities

Belongs to the methyltransferase superfamily. TrmB family.

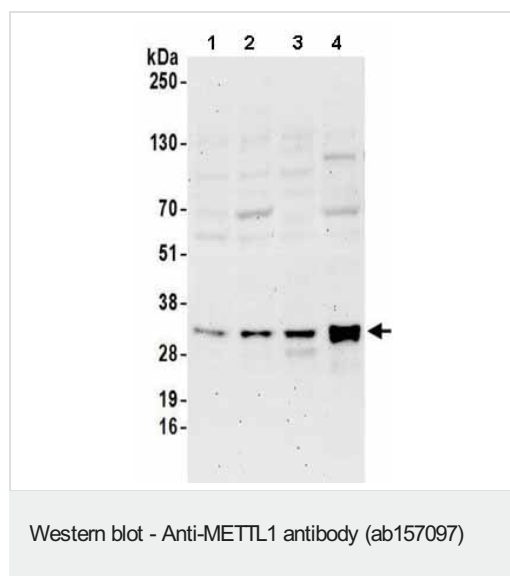
Post-translational modifications

Phosphorylation at Ser-27 inactivates its catalytic activity but does not affect the interaction with WDR4.

Cellular localization

Nucleus.

Images



All lanes : Anti-METTL1 antibody (ab157097) at 0.4 µg/ml

Lane 1 : 293T whole cell lysate

Lane 2 : HeLa whole cell lysate

Lane 3 : Jurkat whole cell lysate

Lane 4 : TCMK-1 whole cell lysate

Lysates/proteins at 50 µg per lane.

Developed using the ECL technique.

Predicted band size: 31 kDa

Exposure time: 3 minutes

Please note: All products are "FOR RESEARCH USE ONLY. NOT FOR USE IN DIAGNOSTIC PROCEDURES"

Our Abpromise to you: Quality guaranteed and expert technical support

- Replacement or refund for products not performing as stated on the datasheet

- Valid for 12 months from date of delivery
- Response to your inquiry within 24 hours
- We provide support in Chinese, English, French, German, Japanese and Spanish
- Extensive multi-media technical resources to help you
- We investigate all quality concerns to ensure our products perform to the highest standards

If the product does not perform as described on this datasheet, we will offer a refund or replacement. For full details of the Abpromise, please visit <https://www.abcam.com/abpromise> or contact our technical team.

Terms and conditions

- Guarantee only valid for products bought direct from Abcam or one of our authorized distributors