

## Product datasheet

# Anti-MGAM antibody ab231229

[4 Images](#)

### Overview

---

<b>Product name</b>	Anti-MGAM antibody
<b>Description</b>	Rabbit polyclonal to MGAM
<b>Host species</b>	Rabbit
<b>Tested applications</b>	<b>Suitable for:</b> WB, IHC-P
<b>Species reactivity</b>	<b>Reacts with:</b> Human
<b>Immunogen</b>	Recombinant fragment (His-tag) corresponding to Human MGAM aa 200-400. Expressed in E.coli. Database link: <a href="#">O43451</a>

 [Run BLAST with](#)

 [Run BLAST with](#)

**Positive control** WB: Recombinant human MGAM; human serum. IHC-P: Human kidney tissue.

**General notes** The Life Science industry has been in the grips of a reproducibility crisis for a number of years. Abcam is leading the way in addressing this with our range of recombinant monoclonal antibodies and knockout edited cell lines for gold-standard validation. Please check that this product meets your needs before purchasing.

If you have any questions, special requirements or concerns, please send us an inquiry and/or contact our Support team ahead of purchase. Recommended alternatives for this product can be found below, along with publications, customer reviews and Q&As

### Properties

---

<b>Form</b>	Liquid
<b>Storage instructions</b>	Shipped at 4°C. Store at +4°C short term (1-2 weeks). Upon delivery aliquot. Store at -20°C long term. Avoid freeze / thaw cycle.
<b>Storage buffer</b>	pH: 7.40 Preservative: 0.02% Sodium azide Constituents: 44.12% PBS, 55.77% Glycerol (glycerin, glycerine)
<b>Purity</b>	Immunogen affinity purified
<b>Purification notes</b>	Antigen-specific affinity chromatography followed by Protein A affinity chromatography.
<b>Clonality</b>	Polyclonal
<b>Isotype</b>	IgG

## Applications

**The Abpromise guarantee** Our **Abpromise guarantee** covers the use of ab231229 in the following tested applications.

The application notes include recommended starting dilutions; optimal dilutions/concentrations should be determined by the end user.

Application	Abreviews	Notes
WB		Use a concentration of 0.5 - 2 µg/ml. Predicted molecular weight: 210 kDa.
IHC-P		Use a concentration of 5 - 20 µg/ml.

## Target

**Function** May serve as an alternate pathway for starch digestion when luminal alpha-amylase activity is reduced because of immaturity or malnutrition. May play a unique role in the digestion of malted dietary oligosaccharides used in food manufacturing.

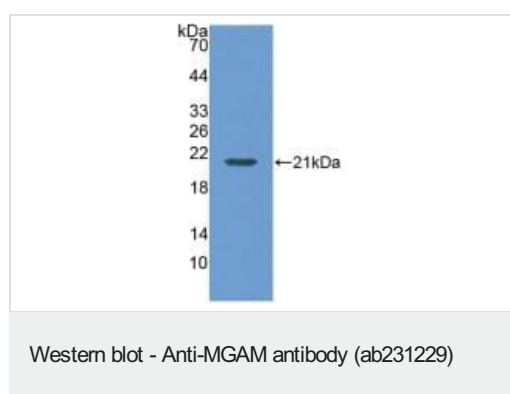
**Tissue specificity** Expressed in small intestine, granulocyte, and kidney but not in salivary gland or pancreas.

**Sequence similarities** Belongs to the glycosyl hydrolase 31 family.  
Contains 2 P-type (trefoil) domains.

**Post-translational modifications** N- and O-glycosylated.  
Does not undergo intracellular or extracellular proteolytic cleavage.  
Sulfated.

**Cellular localization** Apical cell membrane. Brush border.

## Images

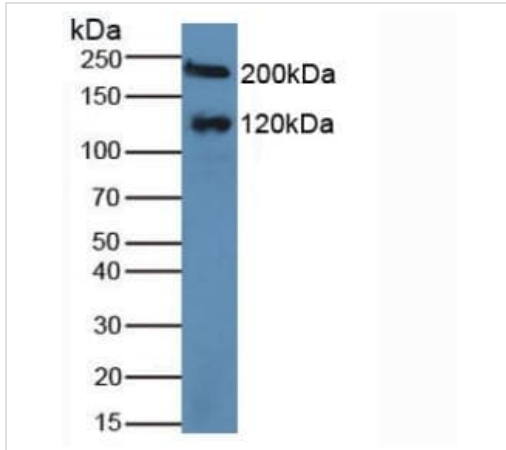


Anti-MGAM antibody (ab231229) at 3 µg + Recombinant human MGAM

### Secondary

HRP-Linked Guinea pig anti-Rabbit at 1/2000 dilution

**Predicted band size:** 210 kDa



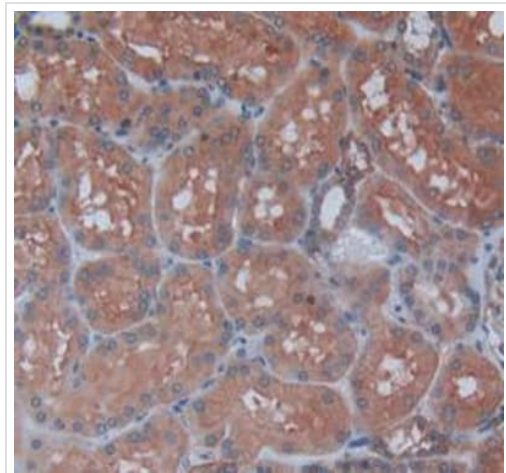
Western blot - Anti-MGAM antibody (ab231229)

Anti-MGAM antibody (ab231229) at 3 µg/ml + Human serum

**Secondary**

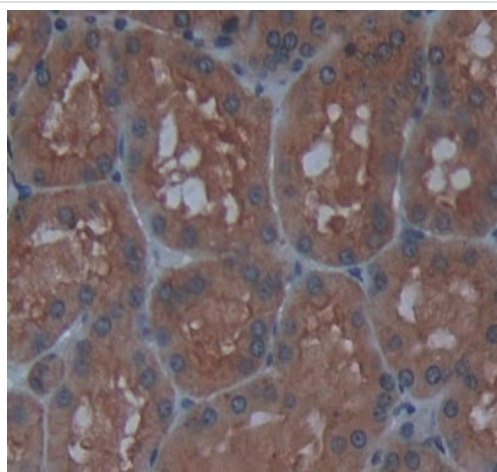
HRP-Linked Guinea pig anti-Rabbit at 1/2000 dilution

**Predicted band size:** 210 kDa



Immunohistochemistry (Formalin/PFA-fixed paraffin-embedded sections) - Anti-MGAM antibody (ab231229)

Formalin-fixed, paraffin-embedded human kidney tissue stained for MGAM using ab231229 at 20 mg/ml in immunohistochemical analysis. DAB staining.



Formalin-fixed, paraffin-embedded human kidney tissue stained for MGAM using ab231229 at 20 mg/ml in immunohistochemical analysis. DAB staining.

Immunohistochemistry (Formalin/PFA-fixed paraffin-embedded sections) - Anti-MGAM antibody (ab231229)

**Please note:** All products are "FOR RESEARCH USE ONLY. NOT FOR USE IN DIAGNOSTIC PROCEDURES"

### Our Abpromise to you: Quality guaranteed and expert technical support

---

- Replacement or refund for products not performing as stated on the datasheet
- Valid for 12 months from date of delivery
- Response to your inquiry within 24 hours
- We provide support in Chinese, English, French, German, Japanese and Spanish
- Extensive multi-media technical resources to help you
- We investigate all quality concerns to ensure our products perform to the highest standards

If the product does not perform as described on this datasheet, we will offer a refund or replacement. For full details of the Abpromise, please visit <https://www.abcam.com/abpromise> or contact our technical team.

### Terms and conditions

---

- Guarantee only valid for products bought direct from Abcam or one of our authorized distributors