


Anti-MGLUR8 antibody - C-terminal ab219146

2 Images

Overview

Product name	Anti-MGLUR8 antibody - C-terminal
Description	Rabbit polyclonal to MGLUR8 - C-terminal
Host species	Rabbit
Tested applications	Suitable for: IHC-P
Species reactivity	Reacts with: Human Predicted to work with: Mouse, Rat, Horse, Chicken, Chimpanzee, Monkey, Baboon, Opossum, Common marmoset, Bat, Platypus 
Immunogen	Synthetic peptide within Human MGLUR8 (C terminal). The exact sequence is proprietary. 19 amino acid peptide Database link: O00222
Positive control	Human pancreas, carcinoma & Human brain, neurons and glia tissue
General notes	<p>The Life Science industry has been in the grips of a reproducibility crisis for a number of years. Abcam is leading the way in addressing this with our range of recombinant monoclonal antibodies and knockout edited cell lines for gold-standard validation. Please check that this product meets your needs before purchasing.</p> <p>If you have any questions, special requirements or concerns, please send us an inquiry and/or contact our Support team ahead of purchase. Recommended alternatives for this product can be found below, along with publications, customer reviews and Q&As</p>

Properties

Form	Liquid
Storage instructions	Shipped at 4°C. Store at +4°C short term (1-2 weeks). Upon delivery aliquot. Store at -20°C long term. Avoid freeze / thaw cycle.
Storage buffer	pH: 7.4 Preservative: 0.09% Sodium azide Constituent: 99% PBS
Purity	Immunogen affinity purified
Clonality	Polyclonal
Isotype	IgG

Applications

The Abpromise guarantee

Our **Abpromise guarantee** covers the use of ab219146 in the following tested applications.

The application notes include recommended starting dilutions; optimal dilutions/concentrations should be determined by the end user.

Application	Abreviews	Notes
IHC-P		Use a concentration of 7 - 18 µg/ml. Perform heat mediated antigen retrieval before commencing with IHC staining protocol.

Target

Function

Receptor for glutamate. The activity of this receptor is mediated by a G-protein that inhibits adenylate cyclase activity.

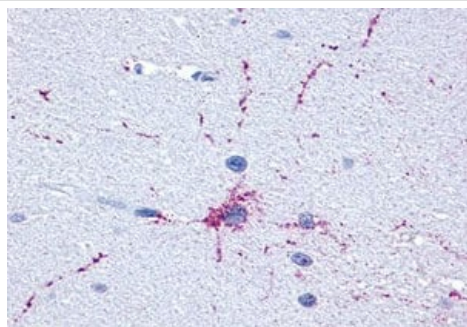
Sequence similarities

Belongs to the G-protein coupled receptor 3 family.

Cellular localization

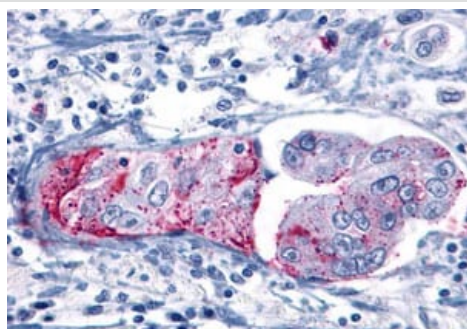
Cell membrane.

Images



Immunohistochemical analysis of paraffin embedded, formalin fixed Human brain, neurons and glia tissue labeling MGLUR8 using ab219146 at 18 µg/ml

Immunohistochemistry (Formalin/PFA-fixed paraffin-embedded sections) - Anti-MGLUR8 antibody - C-terminal (ab219146)



Immunohistochemical analysis of paraffin embedded, formalin fixed Human Pancreas, Carcinoma tissue labeling MGLUR8 using ab219146 at 18 µg/ml

Immunohistochemistry (Formalin/PFA-fixed paraffin-embedded sections) - Anti-MGLUR8 antibody - C-terminal (ab219146)

Please note: All products are "FOR RESEARCH USE ONLY. NOT FOR USE IN DIAGNOSTIC PROCEDURES"

Our Abpromise to you: Quality guaranteed and expert technical support

- Replacement or refund for products not performing as stated on the datasheet
- Valid for 12 months from date of delivery
- Response to your inquiry within 24 hours

- We provide support in Chinese, English, French, German, Japanese and Spanish
- Extensive multi-media technical resources to help you
- We investigate all quality concerns to ensure our products perform to the highest standards

If the product does not perform as described on this datasheet, we will offer a refund or replacement. For full details of the Abpromise, please visit <https://www.abcam.com/abpromise> or contact our technical team.

Terms and conditions

- Guarantee only valid for products bought direct from Abcam or one of our authorized distributors