




## Product datasheet

# Anti-MICU1 antibody ab190114

★★★★☆ [4 Abreviews](#) [2 References](#) [2 Images](#)

### Overview

---

<b>Product name</b>	Anti-MICU1 antibody
<b>Description</b>	Goat polyclonal to MICU1
<b>Host species</b>	Goat
<b>Specificity</b>	ab190114 is expected to recognize reported isoforms 1 and 2 (NP_006068.2; NP_001182447.1).
<b>Tested applications</b>	<b>Suitable for:</b> WB, IHC-P
<b>Species reactivity</b>	<b>Reacts with:</b> Human <b>Predicted to work with:</b> Mouse, Rat, Rabbit, Goat, Horse, Chicken, Hamster, Cow, Dog, Pig, Zebrafish, Cynomolgus monkey, Xenopus tropicalis 
<b>Immunogen</b>	Synthetic peptide corresponding to Human MICU1 aa 100-200 (internal sequence) (Cysteine residue). (NP_001182447.1). Database link: <a href="#">Q9BPX6</a>  <a href="#">Run BLAST with</a>  <a href="#">Run BLAST with</a>
<b>Positive control</b>	K562 lysate; Human lung, respiratory epithelium.
<b>General notes</b>	<p>The Life Science industry has been in the grips of a reproducibility crisis for a number of years. Abcam is leading the way in addressing this with our range of recombinant monoclonal antibodies and knockout edited cell lines for gold-standard validation. Please check that this product meets your needs before purchasing.</p> <p>If you have any questions, special requirements or concerns, please send us an inquiry and/or contact our Support team ahead of purchase. Recommended alternatives for this product can be found below, along with publications, customer reviews and Q&amp;As</p>

### Properties

---

<b>Form</b>	Liquid
<b>Storage instructions</b>	Shipped at 4°C. Store at +4°C short term (1-2 weeks). Upon delivery aliquot. Store at -20°C long term. Avoid freeze / thaw cycle.
<b>Storage buffer</b>	pH: 7.30 Preservative: 0.02% Sodium azide Constituents: 0.5% BSA, 99% Tris buffered saline
<b>Purity</b>	Immunogen affinity purified

<b>Clonality</b>	Polyclonal
<b>Isotype</b>	IgG

## Applications

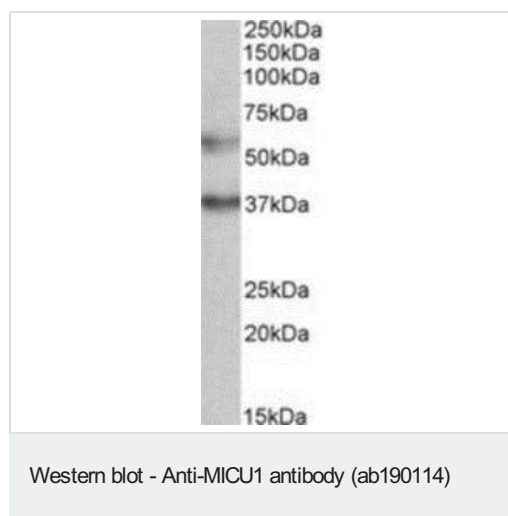
**The Abpromise guarantee** Our **Abpromise guarantee** covers the use of ab190114 in the following tested applications. The application notes include recommended starting dilutions; optimal dilutions/concentrations should be determined by the end user.

Application	Abreviews	Notes
<b>WB</b>	★★★★★ (4)	Use a concentration of 0.5 - 2 µg/ml. Detects a band of approximately 55 kDa (predicted molecular weight: 54 kDa).
<b>IHC-P</b>		Use a concentration of 3.75 µg/ml.

## Target

<b>Function</b>	Key regulator of mitochondrial calcium uptake required for calcium entry into mitochondrion. May act as a calcium sensor via its EF-hand domains, gating the activity of a calcium channel partner. Induces T-helper 1-mediated autoreactivity, which is accompanied by the release of IFNG.
<b>Tissue specificity</b>	Expressed in epithelial cell line. Strongly expressed in epidermal keratinocytes and dermal endothelial cells.
<b>Sequence similarities</b>	Belongs to the MICU1 family. Contains 2 EF-hand domains.
<b>Domain</b>	The EF-hand domains are required for mitochondrial calcium homeostasis function.
<b>Cellular localization</b>	Mitochondrion inner membrane.

## Images



Anti-MICU1 antibody (ab190114) at 0.5 µg/ml + K562 lysate (in RIPA buffer) at 35 µg

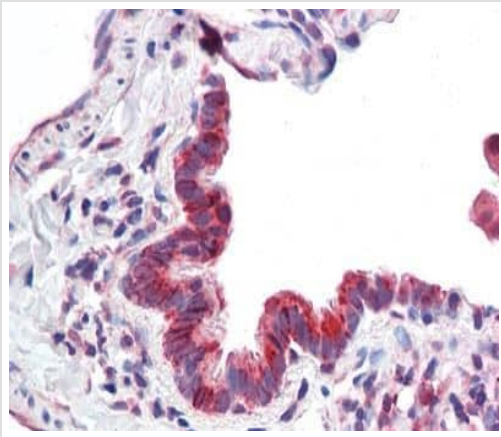
Developed using the ECL technique.

**Predicted band size:** 54 kDa

**Observed band size:** 55 kDa

Primary incubation was 1 hour.

An additional band of unknown identity was also consistently observed at 37 kDa. This band was successfully blocked by incubation with the immunizing peptide.



Immunohistochemical analysis of formalin-fixed, paraffin-embedded Human lung, respiratory epithelium labeling MICU1 with ab190114 at 3.75 µg/ml.

Immunohistochemistry (Formalin/PFA-fixed paraffin-embedded sections) - Anti-MICU1 antibody (ab190114)

**Please note:** All products are "FOR RESEARCH USE ONLY. NOT FOR USE IN DIAGNOSTIC PROCEDURES"

### Our Abpromise to you: Quality guaranteed and expert technical support

---

- Replacement or refund for products not performing as stated on the datasheet
- Valid for 12 months from date of delivery
- Response to your inquiry within 24 hours
- We provide support in Chinese, English, French, German, Japanese and Spanish
- Extensive multi-media technical resources to help you
- We investigate all quality concerns to ensure our products perform to the highest standards

If the product does not perform as described on this datasheet, we will offer a refund or replacement. For full details of the Abpromise, please visit <https://www.abcam.com/abpromise> or contact our technical team.

### Terms and conditions

---

- Guarantee only valid for products bought direct from Abcam or one of our authorized distributors