


Anti-MID1 antibody ab70770

[8 References](#) [3 Images](#)

Overview

Product name	Anti-MID1 antibody
Description	Rabbit polyclonal to MID1
Host species	Rabbit
Tested applications	Suitable for: ELISA, WB, IHC-P, ICC/IF
Species reactivity	Reacts with: Mouse, Human Predicted to work with: Rat 
Immunogen	Synthetic peptide derived from an internal sequence of human MID1
General notes	<p>The Life Science industry has been in the grips of a reproducibility crisis for a number of years. Abcam is leading the way in addressing this with our range of recombinant monoclonal antibodies and knockout edited cell lines for gold-standard validation. Please check that this product meets your needs before purchasing.</p> <p>If you have any questions, special requirements or concerns, please send us an inquiry and/or contact our Support team ahead of purchase. Recommended alternatives for this product can be found below, along with publications, customer reviews and Q&As</p>

Properties

Form	Liquid
Storage instructions	Shipped at 4°C. Upon delivery aliquot and store at -20°C. Avoid freeze / thaw cycles.
Storage buffer	<p>pH: 7.40</p> <p>Preservative: 0.02% Sodium azide</p> <p>Constituents: 50% Glycerol (glycerin, glycerine), 0.87% Sodium chloride, PBS</p> <p>Without Mg2+ and Ca2+</p>
Purity	Immunogen affinity purified
Purification notes	ab70770 was affinity-purified from rabbit antiserum by affinity-chromatography using epitope-specific immunogen.
Clonality	Polyclonal
Isotype	IgG

Applications

The Abpromise guarantee

Our **Abpromise guarantee** covers the use of ab70770 in the following tested applications.

The application notes include recommended starting dilutions; optimal dilutions/concentrations should be determined by the end user.

Application	Abreviews	Notes
ELISA		Use at an assay dependent concentration.
WB		1/500 - 1/1000. Detects a band of approximately 75 kDa (predicted molecular weight: 75 kDa).
IHC-P		Use at an assay dependent concentration.
ICC/IF		1/500 - 1/1000.

Target

Function

May have E3 ubiquitin ligase activity which targets the catalytic subunit of protein phosphatase 2 for degradation.

Tissue specificity

In the fetus, highest expression found in kidney, followed by brain and lung. Expressed at low levels in fetal liver. In the adult, most abundant in heart, placenta and brain.

Involvement in disease

Defects in MID1 are the cause of Opitz syndrome type I (OS-I) [MIM:300000]. OS-I is an X-linked recessive disorder characterized by hypertelorism, genital-urinary defects such as hypospadias in males and splayed labia in females, lip-palate-laryngotracheal clefts, imperforate anus, developmental delay and congenital heart defects. OS-I mutations produce proteins with a decreased affinity for microtubules.

Sequence similarities

Belongs to the TRIM/RBCC family.
Contains 2 B box-type zinc fingers.
Contains 1 B30.2/SPRY domain.
Contains 1 COS domain.
Contains 1 fibronectin type-III domain.
Contains 1 RING-type zinc finger.

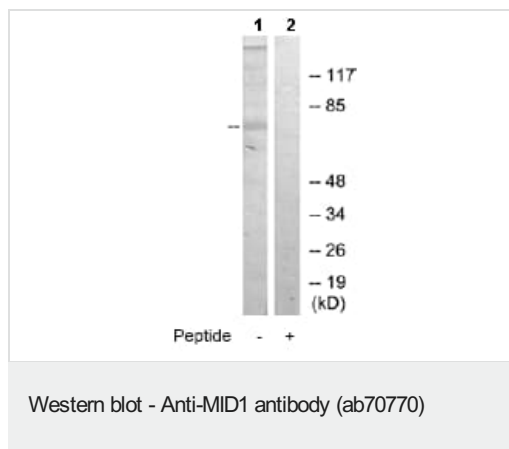
Post-translational modifications

Phosphorylated on serine and threonine residues.

Cellular localization

Cytoplasm. Cytoplasm > cytoskeleton. Cytoplasm > cytoskeleton > spindle. Microtubule-associated. It is associated with microtubules throughout the cell cycle, co-localizing with cytoplasmic fibers in interphase and with the mitotic spindle and midbodies during mitosis and cytokinesis.

Images



All lanes : Anti-MID1 antibody (ab70770) at 1/500 dilution

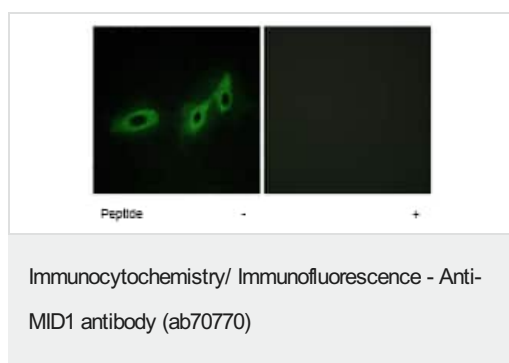
Lane 1 : 293 extract

Lane 2 : 293 extract with immunising peptide at 10 µg

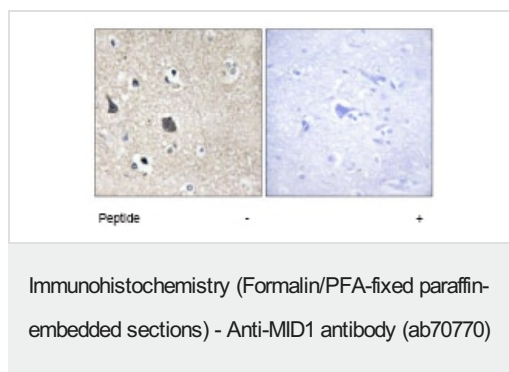
Lysates/proteins at 30 µg per lane.

Predicted band size: 75 kDa

Observed band size: 75 kDa



ab70770 at 1/500 dilution staining MID1 in HeLa cells by Immunofluorescence, in the absence or presence of the immunising peptide.



ab70770 at 1/50 dilution staining MID1 in human brain by Immunohistochemistry, Paraffin-embedded tissue, in the absence or presence of the immunising peptide.

Please note: All products are "FOR RESEARCH USE ONLY. NOT FOR USE IN DIAGNOSTIC PROCEDURES"

Our Abpromise to you: Quality guaranteed and expert technical support

- Replacement or refund for products not performing as stated on the datasheet
- Valid for 12 months from date of delivery
- Response to your inquiry within 24 hours
- We provide support in Chinese, English, French, German, Japanese and Spanish
- Extensive multi-media technical resources to help you

- We investigate all quality concerns to ensure our products perform to the highest standards

If the product does not perform as described on this datasheet, we will offer a refund or replacement. For full details of the Abpromise, please visit <https://www.abcam.com/abpromise> or contact our technical team.

Terms and conditions

- Guarantee only valid for products bought direct from Abcam or one of our authorized distributors