


## Product datasheet

### Anti-Mimitin antibody [EP15279] - C-terminal ab192267

Recombinant RabMAb

8 Images

#### Overview

<b>Product name</b>	Anti-Mimitin antibody [EP15279] - C-terminal
<b>Description</b>	Rabbit monoclonal [EP15279] to Mimitin - C-terminal
<b>Host species</b>	Rabbit
<b>Tested applications</b>	<b>Suitable for:</b> ICC/IF, IP, WB, IHC-P
<b>Species reactivity</b>	<b>Reacts with:</b> Mouse, Human <b>Predicted to work with:</b> Rat 
<b>Immunogen</b>	Recombinant fragment. This information is proprietary to Abcam and/or its suppliers.
<b>Positive control</b>	HepG2 cells and cell lysates: HeLa, SH-SY5Y and HEL cell lysates: Human fetal heart, Mouse kidney and Mouse heart lysates: Human liver and Mouse liver tissue.
<b>General notes</b>	<p>This product is a recombinant monoclonal antibody, which offers several advantages including:</p> <ul style="list-style-type: none"> <li>- High batch-to-batch consistency and reproducibility</li> <li>- Improved sensitivity and specificity</li> <li>- Long-term security of supply</li> <li>- Animal-free production</li> </ul> <p>For more information <a href="#">see here</a>.</p> <p>Our RabMAb<sup>®</sup> technology is a patented hybridoma-based technology for making rabbit monoclonal antibodies. For details on our patents, please refer to <a href="#">RabMAb<sup>®</sup> patents</a>.</p>

#### Properties

<b>Form</b>	Liquid
<b>Storage instructions</b>	Shipped at 4°C. Store at +4°C short term (1-2 weeks). Upon delivery aliquot. Store at -20°C long term. Avoid freeze / thaw cycle.
<b>Storage buffer</b>	pH: 7.2 Preservative: 0.01% Sodium azide Constituents: 40% Glycerol (glycerin, glycerine), 59% PBS, 0.05% BSA
<b>Purity</b>	Protein A purified
<b>Clonality</b>	Monoclonal
<b>Clone number</b>	EP15279

Isotype

IgG

## Applications

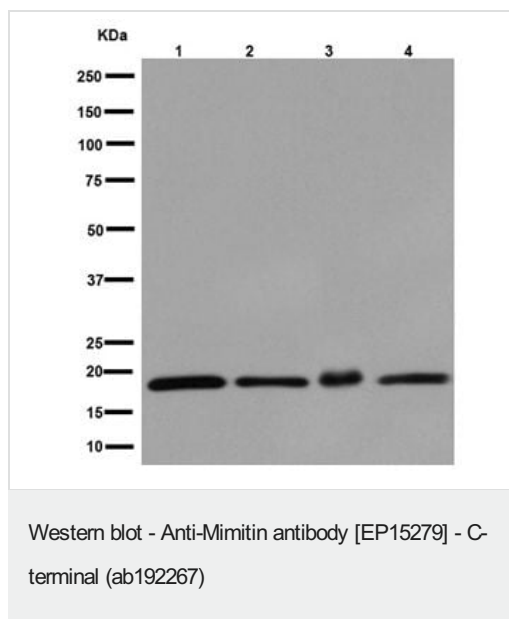
**The Abpromise guarantee** Our **Abpromise guarantee** covers the use of ab192267 in the following tested applications. The application notes include recommended starting dilutions; optimal dilutions/concentrations should be determined by the end user.

Application	Abreviews	Notes
ICC/IF		1/100.
IP		1/60.
WB		1/1000 - 1/10000. Detects a band of approximately 20 kDa (predicted molecular weight: 20 kDa).
IHC-P		1/100 - 1/200. Perform heat mediated antigen retrieval with Tris/EDTA buffer pH 9.0 before commencing with IHC staining protocol.

## Target

<b>Function</b>	Acts as a molecular chaperone for mitochondrial complex I assembly.
<b>Tissue specificity</b>	Highly expressed in ESCC cells. Also expressed in heart, skeletal muscle, liver, and in fibroblasts.
<b>Involvement in disease</b>	Defects in NDUFAF2 are a cause of mitochondrial complex I deficiency (MT-C1D) [MIM:252010]. A disorder of the mitochondrial respiratory chain that causes a wide range of clinical disorders, from lethal neonatal disease to adult-onset neurodegenerative disorders. Phenotypes include macrocephaly with progressive leukodystrophy, non-specific encephalopathy, cardiomyopathy, myopathy, liver disease, Leigh syndrome, Leber hereditary optic neuropathy, and some forms of Parkinson disease.
<b>Sequence similarities</b>	Belongs to the complex I NDUFA12 subunit family.
<b>Cellular localization</b>	Mitochondrion.

## Images



**All lanes :** Anti-Mimitin antibody [EP15279] - C-terminal (ab192267) at 1/10000 dilution

**Lane 1 :** HepG2 cell lysate

**Lane 2 :** HeLa cell lysate

**Lane 3 :** SH-SY5Y cell lysate

**Lane 4 :** HEL cell lysate

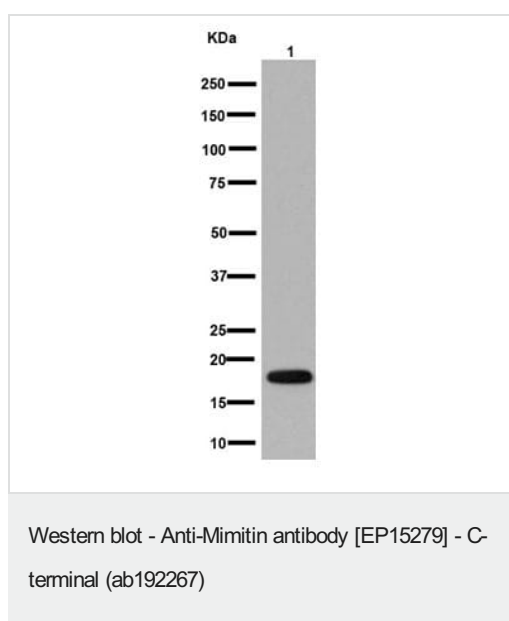
Lysates/proteins at 20 µg per lane.

#### Secondary

**All lanes :** Goat Anti-Rabbit IgG, (H+L), Peroxidase conjugated at 1/1000 dilution

**Predicted band size:** 20 kDa

**Observed band size:** 20 kDa



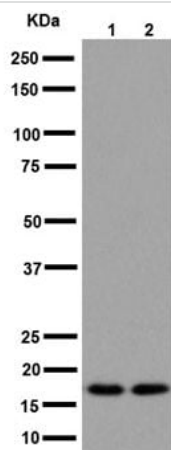
Anti-Mimitin antibody [EP15279] - C-terminal (ab192267) at 1/10000 dilution + Human fetal heart lysate at 10 µg

#### Secondary

Anti-Rabbit IgG (HRP), specific to the non-reduced form of IgG at 1/1000 dilution

**Predicted band size:** 20 kDa

**Observed band size:** 20 kDa



Western blot - Anti-Mimitin antibody [EP15279] - C-terminal (ab192267)

**All lanes** : Anti-Mimitin antibody [EP15279] - C-terminal (ab192267) at 1/1000 dilution

**Lane 1** : Mouse heart tissue lysate

**Lane 2** : Mouse kidney tissue lysate

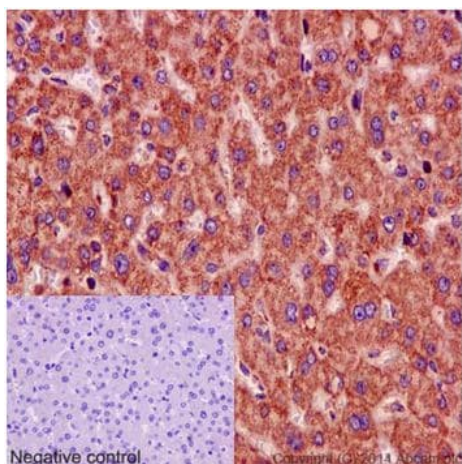
Lysates/proteins at 10 µg per lane.

#### Secondary

**All lanes** : Goat Anti-Rabbit IgG, (H+L), Peroxidase conjugated at 1/1000 dilution

**Predicted band size:** 20 kDa

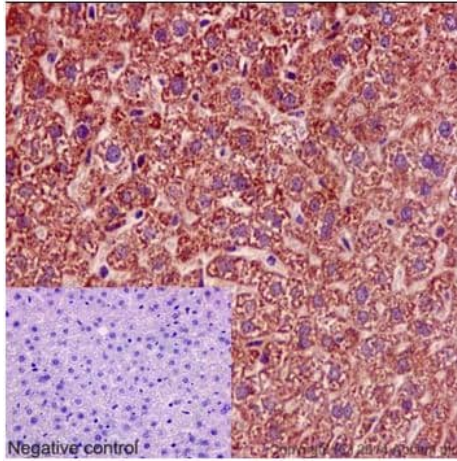
**Observed band size:** 20 kDa



Immunohistochemistry (Formalin/PFA-fixed paraffin-embedded sections) - Anti-Mimitin antibody [EP15279] - C-terminal (ab192267)

Immunohistochemical analysis of paraffin-embedded Human liver tissue labeling Mimitin with ab192267 at 1/200 dilution, followed by prediluted HRP Polymer for Rabbit/Mouse IgG. Counter stained with Hematoxylin. Negative control also shown.

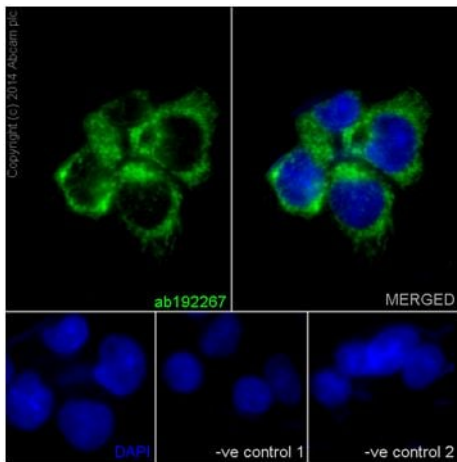
Perform heat mediated antigen retrieval with Tris/EDTA buffer pH 9.0 before commencing with IHC staining protocol.



Immunohistochemistry (Formalin/PFA-fixed paraffin-embedded sections) - Anti-Mimitin antibody [EP15279] - C-terminal (ab192267)

Immunohistochemical analysis of paraffin-embedded Mouse liver tissue labeling Mimitin with ab192267 at 1/200 dilution, followed by prediluted HRP Polymer for Rabbit/Mouse IgG. Counter stained with Hematoxylin. Negative control also shown.

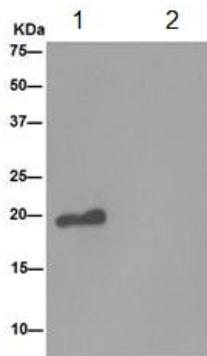
Perform heat mediated antigen retrieval with Tris/EDTA buffer pH 9.0 before commencing with IHC staining protocol.



Immunocytochemistry/ Immunofluorescence - Anti-Mimitin antibody [EP15279] - C-terminal (ab192267)

Immunofluorescent analysis of 4% paraformaldehyde-fixed HepG2 cells labeling Mimitin with ab192267 at 1/100 dilution. The cells were permeabilised with 0.1% Triton X-100. Goat anti-rabbit IgG (Alexa Fluor® 488) ([ab150077](#)) at 1/200 dilution was used as the secondary antibody (green). The nuclear counter stain is DAPI (blue).

Negative controls, ab192267 at 1/100 dilution followed by [ab150120](#) (AlexaFluor®594 Goat anti-Mouse secondary) at 1/500 dilution.



Immunoprecipitation - Anti-Mimitin antibody [EP15279] - C-terminal (ab192267)

Western blot analysis of Mimitin in immunoprecipitation pellets from MDA-MB-435 lysate. ab192267 used at 1/60 dilution (Lane 1) or PBS (Lane 2). Secondary antibody Anti-Rabbit IgG (HRP), specific to the non-reduced form of IgG at a 1/1000 dilution.

### Why choose a recombinant antibody?



**Research with confidence**  
Consistent and reproducible results



**Long-term and scalable supply**  
Recombinant technology



**Success from the first experiment**  
Confirmed specificity



**Ethical standards compliant**  
Animal-free production

Anti-Mimitin antibody [EP15279] - C-terminal  
(ab192267)

**Please note:** All products are "FOR RESEARCH USE ONLY. NOT FOR USE IN DIAGNOSTIC PROCEDURES"

### Our Abpromise to you: Quality guaranteed and expert technical support

---

- Replacement or refund for products not performing as stated on the datasheet
- Valid for 12 months from date of delivery
- Response to your inquiry within 24 hours
- We provide support in Chinese, English, French, German, Japanese and Spanish
- Extensive multi-media technical resources to help you
- We investigate all quality concerns to ensure our products perform to the highest standards

If the product does not perform as described on this datasheet, we will offer a refund or replacement. For full details of the Abpromise, please visit <https://www.abcam.com/abpromise> or contact our technical team.

### Terms and conditions

---

- Guarantee only valid for products bought direct from Abcam or one of our authorized distributors