

## Product datasheet

# Anti-Mitochondria antibody [SPM198], prediluted ab17857

[2 References](#) [1 Image](#)

### Overview

---

<b>Product name</b>	Anti-Mitochondria antibody [SPM198], prediluted
<b>Description</b>	Mouse monoclonal [SPM198] to Mitochondria, prediluted
<b>Host species</b>	Mouse
<b>Specificity</b>	This antibody recognizes a 60kDa non-glycosylated protein component of mitochondria found in human cells
<b>Tested applications</b>	<b>Suitable for:</b> IHC-P
<b>Species reactivity</b>	<b>Reacts with:</b> Human
<b>Immunogen</b>	Tissue, cells or virus corresponding to Human Mitochondria. Semi-Purified mitochondrial preparation
<b>Positive control</b>	Liver
<b>General notes</b>	

ab17857 recognizes a 60kDa non-glycosylated protein component of mitochondria found in human cells. It can be used to stain the mitochondria in human cell or tissue preparations and can be used as a mitochondrial-marker in subcellular fractions. ab17857 also detects the organelles within mitochondria; characteristic ('spaghetti'-like) mitochondrial staining pattern is observed in the cytoplasm of normal and malignant human cells.

The Life Science industry has been in the grips of a reproducibility crisis for a number of years. Abcam is leading the way in addressing this with our range of recombinant monoclonal antibodies and knockout edited cell lines for gold-standard validation. Please check that this product meets your needs before purchasing.

If you have any questions, special requirements or concerns, please send us an inquiry and/or contact our Support team ahead of purchase. Recommended alternatives for this product can be found below, along with publications, customer reviews and Q&As

### Properties

---

<b>Form</b>	Liquid
<b>Storage instructions</b>	Shipped at 4°C. Store at +4°C. Do Not Freeze.
<b>Storage buffer</b>	pH: 7.2

Preservative: 0.1% Sodium azide  
Constituents: 0.605% Tris, 1% BSA

<b>Purity</b>	IgG fraction
<b>Primary antibody notes</b>	ab17857 recognizes a 60kDa non-glycosylated protein component of mitochondria found in human cells. It can be used to stain the mitochondria in human cell or tissue preparations and can be used as a mitochondrial-marker in subcellular fractions. ab17857 also detects the organelles within mitochondria; characteristic ('spaghetti'-like) mitochondrial staining pattern is observed in the cytoplasm of normal and malignant human cells.
<b>Clonality</b>	Monoclonal
<b>Clone number</b>	SPM198
<b>Isotype</b>	IgG1
<b>Light chain type</b>	kappa

## Applications

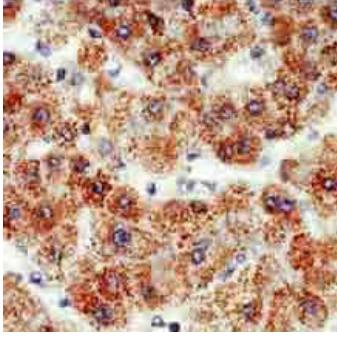
**The Abpromise guarantee** Our **Abpromise guarantee** covers the use of ab17857 in the following tested applications. The application notes include recommended starting dilutions; optimal dilutions/concentrations should be determined by the end user.

Application	Abreviews	Notes
IHC-P		1/1. Perform heat mediated antigen retrieval before commencing with IHC staining protocol. Ready-to-use for 30 min at RT.

## Target

<b>Relevance</b>	Mitochondria are the power house of the cell. They are distinct organelles with two membranes. Usually they are rod shaped, however they can be round. The outer membrane limits the organelle and the inner membrane is thrown into folds or shelves that project inward and are called "cristae mitochondriales".
<b>Cellular localization</b>	Mitochondrial

## Images



ab17857 detecting mitochondria in human liver (dilution of ab17857 = ready-to-use for 30min at RT)

Immunohistochemistry (Formalin/PFA-fixed paraffin-embedded sections) - Anti-Mitochondria antibody [SPM198], prediluted (ab17857)

**Please note:** All products are "FOR RESEARCH USE ONLY. NOT FOR USE IN DIAGNOSTIC PROCEDURES"

### **Our Abpromise to you: Quality guaranteed and expert technical support**

---

- Replacement or refund for products not performing as stated on the datasheet
- Valid for 12 months from date of delivery
- Response to your inquiry within 24 hours
- We provide support in Chinese, English, French, German, Japanese and Spanish
- Extensive multi-media technical resources to help you
- We investigate all quality concerns to ensure our products perform to the highest standards

If the product does not perform as described on this datasheet, we will offer a refund or replacement. For full details of the Abpromise, please visit <https://www.abcam.com/abpromise> or contact our technical team.

### **Terms and conditions**

---

- Guarantee only valid for products bought direct from Abcam or one of our authorized distributors