

# Anti-MMP16 antibody ab73877

[13 References](#) [3 Images](#)

## Overview

<b>Product name</b>	Anti-MMP16 antibody
<b>Description</b>	Rabbit polyclonal to MMP16
<b>Host species</b>	Rabbit
<b>Tested applications</b>	<b>Suitable for:</b> WB, IHC-P, IHC-Fr
<b>Species reactivity</b>	<b>Reacts with:</b> Rat, Human
<b>Immunogen</b>	A synthetic peptide mapping at the C-terminal of human MMP16.
<b>General notes</b>	<p>The Life Science industry has been in the grips of a reproducibility crisis for a number of years. Abcam is leading the way in addressing this with our range of recombinant monoclonal antibodies and knockout edited cell lines for gold-standard validation. Please check that this product meets your needs before purchasing.</p> <p>If you have any questions, special requirements or concerns, please send us an inquiry and/or contact our Support team ahead of purchase. Recommended alternatives for this product can be found below, along with publications, customer reviews and Q&amp;As</p>

## Properties

<b>Form</b>	Liquid
<b>Storage instructions</b>	Shipped at 4°C. Upon delivery aliquot and store at -20°C. Avoid freeze / thaw cycles.
<b>Storage buffer</b>	Preservatives: 0.025% Thimerosal (merthiolate), 0.025% Sodium azide Constituents: 2.5% BSA, 0.45% Sodium chloride, 0.1% Dibasic monohydrogen sodium phosphate
<b>Purity</b>	Immunogen affinity purified
<b>Clonality</b>	Polyclonal
<b>Isotype</b>	IgG

## Applications

**The Abpromise guarantee** Our **Abpromise guarantee** covers the use of ab73877 in the following tested applications. The application notes include recommended starting dilutions; optimal dilutions/concentrations should be determined by the end user.

Application	Abreviews	Notes
WB		Use a concentration of 1 - 2 µg/ml. Predicted molecular weight: 57 kDa.
IHC-P		Use a concentration of 0.5 - 1 µg/ml.
IHC-Fr		Use a concentration of 0.5 - 1 µg/ml.

## Target

### Function

Endopeptidase that degrades various components of the extracellular matrix, such as collagen type III and fibronectin. Activates progelatinase A. Involved in the matrix remodeling of blood vessels. Isoform short cleaves fibronectin and also collagen type III, but at lower rate. It has no effect on type I, II, IV and V collagen. However, upon interaction with CSPG4, it may be involved in degradation and invasion of type I collagen by melanoma cells.

### Tissue specificity

Expressed in heart, brain, placenta, ovary and small intestine. Isoform Short is found in the ovary.

### Sequence similarities

Belongs to the peptidase M10A family.  
Contains 4 hemopexin-like domains.

### Developmental stage

Expressed in tissues undergoing reconstruction. Present in fetal tissues, especially in brain. Expression seems to decline with advanced development.

### Domain

The conserved cysteine present in the cysteine-switch motif binds the catalytic zinc ion, thus inhibiting the enzyme. The dissociation of the cysteine from the zinc ion upon the activation-peptide release activates the enzyme.

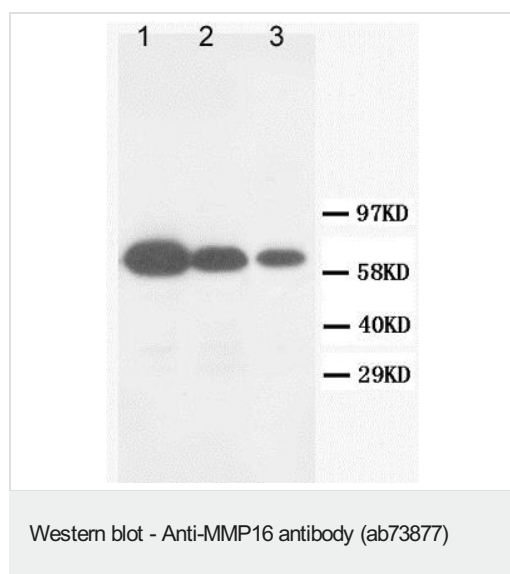
### Post-translational modifications

The precursor is cleaved by a furin endopeptidase.

### Cellular localization

Cell membrane. Localized at the cell surface of melanoma cells and Secreted > extracellular space > extracellular matrix. Cell surface. Localized at the cell surface of melanoma cells.

## Images



**All lanes :** Anti-MMP16 antibody (ab73877) at 1 µg/ml

**Lane 1 :** Whole cell lysates prepared from Human Hela cells.

**Lane 2 :** Whole cell lysates prepared from Human Jurkat cells.

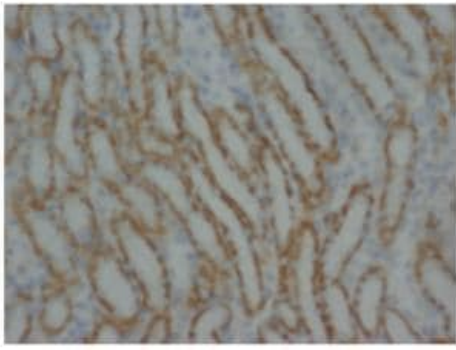
**Lane 3 :** Whole cell lysates prepared from Human Colo320 cells.

Lysates/proteins at 50 µg per lane.

### Secondary

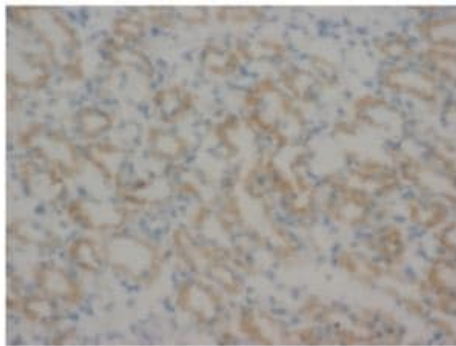
**All lanes :** HRP-conjugated Goat anti-rabbit IgG at 1/3000 dilution

**Predicted band size:** 57 kDa



Immunohistochemistry (Formalin/PFA-fixed paraffin-embedded sections) - Anti-MMP16 antibody (ab73877)

Immunohistochemical analysis of paraffin-embedded sections Rat kidney using MMP16 antibody ab73877 at 0.5 - 1 µg/ml.



Immunohistochemistry (Frozen sections) - Anti-MMP16 antibody (ab73877)

Immunohistochemical analysis of frozen sections Rat kidney using MMP16 antibody ab73877 at 0.5 - 1 µg/ml.

**Please note:** All products are "FOR RESEARCH USE ONLY. NOT FOR USE IN DIAGNOSTIC PROCEDURES"

### Our Abpromise to you: Quality guaranteed and expert technical support

---

- Replacement or refund for products not performing as stated on the datasheet
- Valid for 12 months from date of delivery
- Response to your inquiry within 24 hours
- We provide support in Chinese, English, French, German, Japanese and Spanish
- Extensive multi-media technical resources to help you
- We investigate all quality concerns to ensure our products perform to the highest standards

If the product does not perform as described on this datasheet, we will offer a refund or replacement. For full details of the Abpromise, please visit <https://www.abcam.com/abpromise> or contact our technical team.

### Terms and conditions

---

- Guarantee only valid for products bought direct from Abcam or one of our authorized distributors