


Product datasheet

Anti-MMP20 antibody [EP1275Y] ab76109

Recombinant RabMAb

[4 References](#) [2 Images](#)

Overview

Product name	Anti-MMP20 antibody [EP1275Y]
Description	Rabbit monoclonal [EP1275Y] to MMP20
Host species	Rabbit
Tested applications	Suitable for: WB Unsuitable for: Flow Cyt, ICC/IF or IP
Species reactivity	Reacts with: Human Predicted to work with: Mouse, Rat 
Immunogen	Synthetic peptide within Human MMP20 aa 450-550 (C terminal). The exact sequence is proprietary.
Positive control	HeLa whole cell lysate (ab150035); HeLa cells.
General notes	<p>The production method for this product has been changed from hybridoma to recombinant on 15th April 2024</p> <p>This product is a recombinant monoclonal antibody, which offers several advantages including:</p> <ul style="list-style-type: none">- High batch-to-batch consistency and reproducibility- Improved sensitivity and specificity- Long-term security of supply- Animal-free production <p>For more information see here.</p> <p>Our RabMAb[®] technology is a patented hybridoma-based technology for making rabbit monoclonal antibodies. For details on our patents, please refer to RabMAb[®] patents.</p>

Properties

Form	Liquid
Storage instructions	Shipped at 4°C. Upon delivery aliquot and store at -20°C. Avoid repeated freeze / thaw cycles.
Storage buffer	pH: 7.20 Preservative: 0.05% Sodium azide Constituents: 0.1% BSA, 40% Glycerol (glycerin, glycerine), 59% PBS
Purity	Protein A purified

Clonality	Monoclonal
Clone number	EP1275Y
Isotype	IgG

Applications

The Abpromise guarantee Our **Abpromise guarantee** covers the use of ab76109 in the following tested applications. The application notes include recommended starting dilutions; optimal dilutions/concentrations should be determined by the end user.

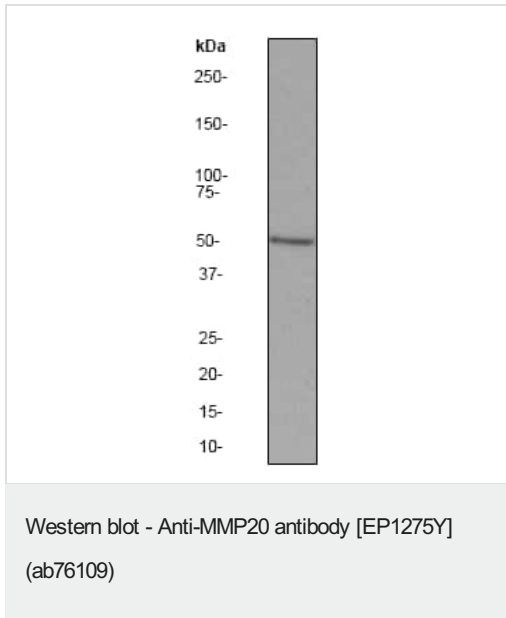
Application	Abreviews	Notes
WB		1/500. Detects a band of approximately 54 kDa (predicted molecular weight: 54 kDa).

Application notes Is unsuitable for Flow Cyt, ICC/IF or IP.

Target

Function	Degrades amelogenin, the major protein component of the enamel matrix and two of the macromolecules characterizing the cartilage extracellular matrix: aggrecan and the cartilage oligomeric matrix protein (COMP). May play a central role in tooth enamel formation.
Tissue specificity	Expressed specifically in the enamel organ.
Involvement in disease	Defects in MMP20 are the cause of amelogenesis imperfecta hypomaturational type 2A2 (AI2A2) [MIM:612529]. AI2A2 is an autosomal recessive defect of enamel formation. The disorder involves both primary and secondary dentitions. The teeth have a shiny agar jelly appearance and the enamel is softer than normal. Brown pigment is present in middle layers of enamel.
Sequence similarities	Belongs to the peptidase M10A family. Contains 4 hemopexin-like domains.
Domain	The conserved cysteine present in the cysteine-switch motif binds the catalytic zinc ion, thus inhibiting the enzyme. The dissociation of the cysteine from the zinc ion upon the activation-peptide release activates the enzyme.
Post-translational modifications	Autoactivates at least at the 107-Asn-Tyr-108 site.
Cellular localization	Secreted > extracellular space > extracellular matrix.

Images



Anti-MMP20 antibody [EP1275Y] (ab76109) at 1/500 dilution + HeLa cell lysate at 10 µg





Secondary

goat anti-rabbit HRP at 1/2000 dilution

Predicted band size: 54 kDa

Observed band size: 54 kDa

Why choose a recombinant antibody?

 <p>Research with confidence Consistent and reproducible results</p>	 <p>Long-term and scalable supply Recombinant technology</p>
 <p>Success from the first experiment Confirmed specificity</p>	 <p>Ethical standards compliant Animal-free production</p>

Anti-MMP20 antibody [EP1275Y] (ab76109)

Please note: All products are "FOR RESEARCH USE ONLY. NOT FOR USE IN DIAGNOSTIC PROCEDURES"

Our Abpromise to you: Quality guaranteed and expert technical support

- Replacement or refund for products not performing as stated on the datasheet
- Valid for 12 months from date of delivery
- Response to your inquiry within 24 hours

- We provide support in Chinese, English, French, German, Japanese and Spanish
- Extensive multi-media technical resources to help you
- We investigate all quality concerns to ensure our products perform to the highest standards

If the product does not perform as described on this datasheet, we will offer a refund or replacement. For full details of the Abpromise, please visit <https://www.abcam.com/abpromise> or contact our technical team.

Terms and conditions

- Guarantee only valid for products bought direct from Abcam or one of our authorized distributors