


Product datasheet

Anti-MMP28 antibody [EP1341(2)] ab175937

RabMAb

[3 References](#) [2 Images](#)

Overview

Product name	Anti-MMP28 antibody [EP1341(2)]
Description	Rabbit monoclonal [EP1341(2)] to MMP28
Host species	Rabbit
Tested applications	Suitable for: WB Unsuitable for: ICC/IF, IHC-P or IP
Species reactivity	Reacts with: Human Predicted to work with: Mouse, Rat 
Immunogen	Synthetic peptide. This information is proprietary to Abcam and/or its suppliers.
Positive control	Human placenta, human testis lysate, recombinant protein fragment
General notes	<p>Our RabMAb[®] technology is a patented hybridoma-based technology for making rabbit monoclonal antibodies. For details on our patents, please refer to RabMAb[®] patents.</p> <p>The Life Science industry has been in the grips of a reproducibility crisis for a number of years. Abcam is leading the way in addressing this with our range of recombinant monoclonal antibodies and knockout edited cell lines for gold-standard validation. Please check that this product meets your needs before purchasing.</p> <p>If you have any questions, special requirements or concerns, please send us an inquiry and/or contact our Support team ahead of purchase. Recommended alternatives for this product can be found below, along with publications, customer reviews and Q&As</p>

Properties

Form	Liquid
Storage instructions	Shipped at 4°C. Store at +4°C short term (1-2 weeks). Upon delivery aliquot. Store at -20°C long term. Avoid freeze / thaw cycle.
Storage buffer	pH: 7.20 Preservative: 0.01% Sodium azide Constituents: 9% PBS, 40% Glycerol (glycerin, glycerine), 0.05% BSA, 50% Tissue culture supernatant
Purity	Tissue culture supernatant

Clonality	Monoclonal
Clone number	EP1341(2)
Isotype	IgG

Applications

The Abpromise guarantee Our **Abpromise guarantee** covers the use of ab175937 in the following tested applications. The application notes include recommended starting dilutions; optimal dilutions/concentrations should be determined by the end user.

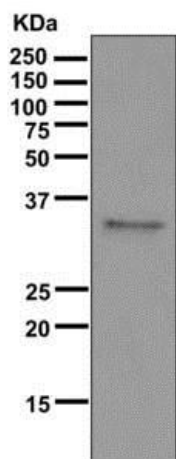
Application	Abreviews	Notes
WB		1/1000 - 1/5000. Detects a band of approximately 62 kDa (predicted molecular weight: 59 kDa).

Application notes Is unsuitable for ICC/IF, IHC-P or IP.

Target

Function	Can degrade casein. Could play a role in tissues homeostasis and repair.
Tissue specificity	Expressed at high levels in testes and lung. Low levels are detected in kidney, pancreas and skin. Also expressed in fetal lung, brain, skeletal muscle and kidney. Expressed selectively in keratinocytes. Widely expressed in several carcinomas as well. Is up-regulated in response to injury in the skin.
Sequence similarities	Belongs to the peptidase M10A family. Contains 4 hemopexin-like domains.
Domain	The conserved cysteine present in the cysteine-switch motif binds the catalytic zinc ion, thus inhibiting the enzyme. The dissociation of the cysteine from the zinc ion upon the activation-peptide release activates the enzyme.
Post-translational modifications	The precursor is cleaved by a furin endopeptidase.
Cellular localization	Secreted > extracellular space > extracellular matrix.

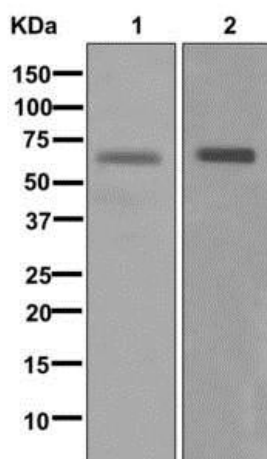
Images



Western blot - Anti-MMP28 antibody [EP1341(2)]
(ab175937)

Anti-MMP28 antibody [EP1341(2)] (ab175937) at 1/1000 dilution +
MMP-28 recombinant protein fragment at 0.01 µg

Predicted band size: 59 kDa



Western blot - Anti-MMP28 antibody [EP1341(2)]
(ab175937)

All lanes : Anti-MMP28 antibody [EP1341(2)] (ab175937) at
1/1000 dilution

Lane 1 : Human placenta lysate

Lane 2 : Human testis lysate

Lysates/proteins at 10 µg per lane.

Predicted band size: 59 kDa

Please note: All products are "FOR RESEARCH USE ONLY. NOT FOR USE IN DIAGNOSTIC PROCEDURES"

Our Abpromise to you: Quality guaranteed and expert technical support

- Replacement or refund for products not performing as stated on the datasheet
- Valid for 12 months from date of delivery
- Response to your inquiry within 24 hours
- We provide support in Chinese, English, French, German, Japanese and Spanish
- Extensive multi-media technical resources to help you
- We investigate all quality concerns to ensure our products perform to the highest standards

If the product does not perform as described on this datasheet, we will offer a refund or replacement. For full details of the Abpromise, please visit <https://www.abcam.com/abpromise> or contact our technical team.

Terms and conditions

- Guarantee only valid for products bought direct from Abcam or one of our authorized distributors