

## Product datasheet

# Anti-Mouse IgG antibody [RMG07] ab197767

Recombinant

[15 References](#) [3 Images](#)

### Overview

<b>Product name</b>	Anti-Mouse IgG antibody [RMG07]
<b>Description</b>	Goat monoclonal [RMG07] to Mouse IgG
<b>Host species</b>	Goat
<b>Specificity</b>	ab197767 reacts to Mouse IgG, including IgG1, IgG2a, IgG2b, and IgG3. No cross reactivity with IgM, IgA, IgE, human IgG, rat IgG, or rabbit IgG.
<b>Tested applications</b>	<b>Suitable for:</b> ELISA
<b>Species reactivity</b>	<b>Reacts with:</b> Mouse
<b>Immunogen</b>	Full length protein corresponding to Mouse IgG.
<b>Positive control</b>	ELISA: Mouse IgG.

### Properties

<b>Form</b>	Liquid
<b>Storage instructions</b>	Shipped at 4°C. Store at +4°C short term (1-2 weeks). Upon delivery aliquot. Store at -20°C long term. Avoid freeze / thaw cycle.
<b>Storage buffer</b>	Preservative: 0.09% Sodium azide Constituents: 1% BSA, PBS, 50% Glycerol (glycerin, glycerine)
<b>Purity</b>	Protein G purified
<b>Purification notes</b>	Purified from an animal origin-free culture supernatant.
<b>Clonality</b>	Monoclonal
<b>Clone number</b>	RMG07
<b>Isotype</b>	IgG

### Applications

**The Abpromise guarantee** Our **Abpromise guarantee** covers the use of ab197767 in the following tested applications. The application notes include recommended starting dilutions; optimal dilutions/concentrations should be determined by the end user.

Application	Abreviews	Notes
ELISA		Use a concentration of 0.05 - 1 µg/ml.

**Target**

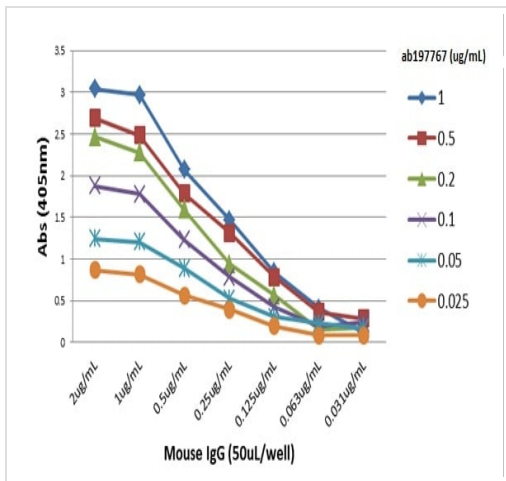
**Relevance**

IgG is the most abundant class of antibodies found in blood serum and lymph. It is active against bacteria, fungi, viruses, and foreign particles. Immunoglobulin G antibodies trigger action of the complement system.

**Cellular localization**

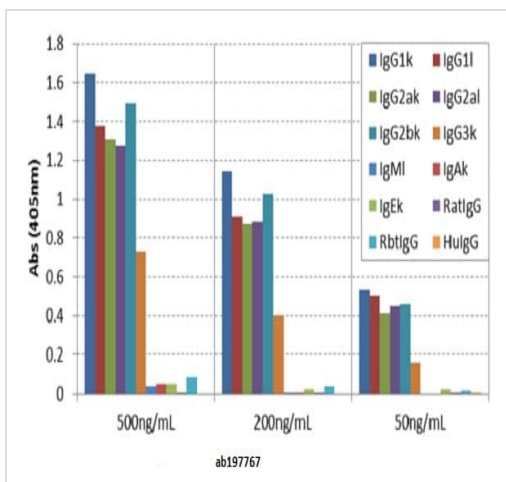
Secreted

**Images**



A titer ELISA of mouse IgG. The plate was coated with different amounts of mouse IgG. A serial dilution of ab197767 was used as the primary antibody. An alkaline phosphatase conjugated anti-goat IgG as the secondary antibody.

ELISA - Anti-Mouse IgG antibody [RMG07] (ab197767)



ELISA of mouse immunoglobulins shows ab197767 reacted to mouse IgG1, IgG2a, IgG2b, and IgG3; no cross reactivity with IgM, IgA, IgE, human IgG, rat IgG, and rabbit IgG. The plate was coated with 50 ng/well of different immunoglobulins. 500 ng/mL, 200 ng/mL, or 50 ng/mL of ab197767 was used as the primary antibody. An alkaline phosphatase conjugated anti-rabbit IgG as the secondary antibody.

ELISA - Anti-Mouse IgG antibody [RMG07] (ab197767)

## Why choose a recombinant antibody?



**Research with confidence**  
Consistent and reproducible results



**Long-term and scalable supply**  
Recombinant technology



**Success from the first experiment**  
Confirmed specificity



**Ethical standards compliant**  
Animal-free production

Anti-Mouse IgG antibody [RMG07] (ab197767)

**Please note:** All products are "FOR RESEARCH USE ONLY. NOT FOR USE IN DIAGNOSTIC PROCEDURES"

### Our Abpromise to you: Quality guaranteed and expert technical support

---

- Replacement or refund for products not performing as stated on the datasheet
- Valid for 12 months from date of delivery
- Response to your inquiry within 24 hours
- We provide support in Chinese, English, French, German, Japanese and Spanish
- Extensive multi-media technical resources to help you
- We investigate all quality concerns to ensure our products perform to the highest standards

If the product does not perform as described on this datasheet, we will offer a refund or replacement. For full details of the Abpromise, please visit <https://www.abcam.com/abpromise> or contact our technical team.

### Terms and conditions

---

- Guarantee only valid for products bought direct from Abcam or one of our authorized distributors