

## Product datasheet

# Anti-Mouse Serum Albumin antibody ab34807

[6 References](#) [2 Images](#)

### Overview

---

<b>Product name</b>	Anti-Mouse Serum Albumin antibody
<b>Description</b>	Rabbit polyclonal to Mouse Serum Albumin
<b>Host species</b>	Rabbit
<b>Tested applications</b>	<b>Suitable for:</b> WB
<b>Species reactivity</b>	<b>Reacts with:</b> Mouse
<b>Immunogen</b>	Full length native protein (purified) corresponding to Mouse Mouse Serum Albumin.
<b>General notes</b>	<p>The Life Science industry has been in the grips of a reproducibility crisis for a number of years. Abcam is leading the way in addressing this with our range of recombinant monoclonal antibodies and knockout edited cell lines for gold-standard validation. Please check that this product meets your needs before purchasing.</p> <p>If you have any questions, special requirements or concerns, please send us an inquiry and/or contact our Support team ahead of purchase. Recommended alternatives for this product can be found below, along with publications, customer reviews and Q&amp;As</p>

### Properties

---

<b>Form</b>	Liquid
<b>Storage instructions</b>	Shipped at 4°C. Store at +4°C short term (1-2 weeks). Upon delivery aliquot. Store at -20°C or -80°C. Avoid freeze / thaw cycle.
<b>Storage buffer</b>	Preservative: 0.01% Sodium azide Constituents: 0.42% Potassium phosphate, 0.87% Sodium chloride
<b>Purity</b>	Protein A purified
<b>Purification notes</b>	Purified from monospecific antiserum by Protein A Sepharose affinity chromatography, followed by POROS EP antigen resin affinity purification.
<b>Clonality</b>	Polyclonal
<b>Isotype</b>	IgG

### Applications

---

**The Abpromise guarantee** Our **Abpromise guarantee** covers the use of ab34807 in the following tested applications.

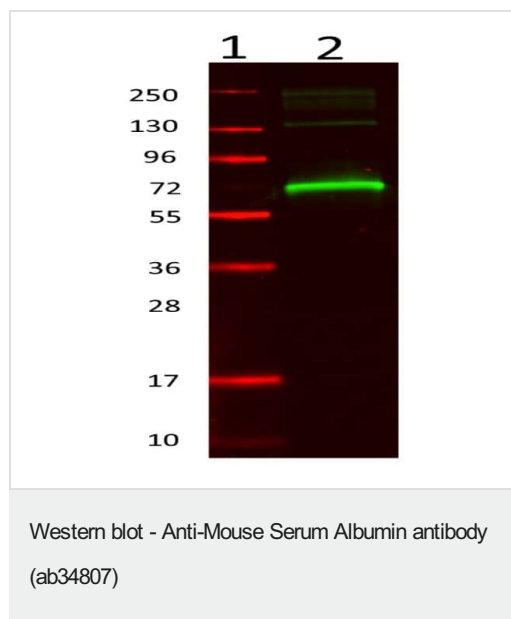
The application notes include recommended starting dilutions; optimal dilutions/concentrations should be determined by the end user.

Application	Abreviews	Notes
WB		1/20000 - 1/100000.

## Target

<b>Function</b>	Serum albumin, the main protein of plasma, has a good binding capacity for water, Ca(2+), Na(+), K(+), fatty acids, hormones, bilirubin and drugs. Its main function is the regulation of the colloidal osmotic pressure of blood. Major zinc transporter in plasma, typically binds about 80% of all plasma zinc.
<b>Tissue specificity</b>	Plasma.
<b>Sequence similarities</b>	Belongs to the ALB/AFP/VDB family. Contains 3 albumin domains.
<b>Post-translational modifications</b>	Phosphorylation sites are present in the extracellular medium.
<b>Cellular localization</b>	Secreted.

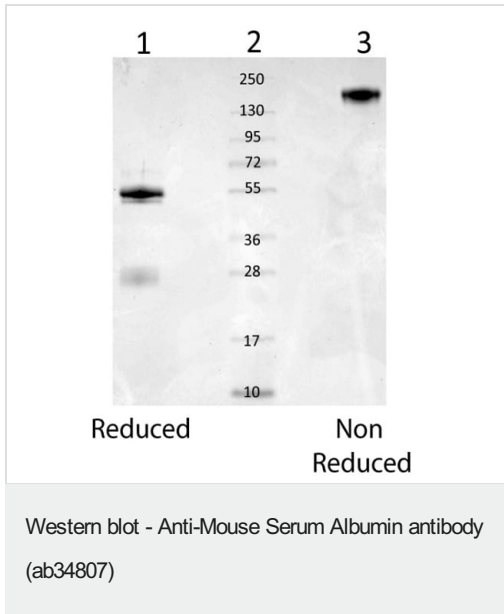
## Images



Anti-Mouse Serum Albumin antibody (ab34807) + mouse serum albumin at 0.1 µg

**Observed band size:** 72 kDa

Primary antibody: MSA antibody at 1:1000 in 1% BSA-TTBS for overnight at 4°C. Secondary antibody: IRDye800™ rabbit secondary antibody at 1:20,000 for 45 min at RT. Block: Blocking Buffer for Fluorescent Western Blotting 30 min at 4°C.



**All lanes :** Anti-Mouse Serum Albumin antibody (ab34807)

**Lane 1 :** mouse serum albumin reduced

**Lane 3 :** mouse serum albumin non-reduced

Lysates/proteins at 1 µg per lane.

**Please note:** All products are "FOR RESEARCH USE ONLY. NOT FOR USE IN DIAGNOSTIC PROCEDURES"

### Our Abpromise to you: Quality guaranteed and expert technical support

- Replacement or refund for products not performing as stated on the datasheet
- Valid for 12 months from date of delivery
- Response to your inquiry within 24 hours
- We provide support in Chinese, English, French, German, Japanese and Spanish
- Extensive multi-media technical resources to help you
- We investigate all quality concerns to ensure our products perform to the highest standards

If the product does not perform as described on this datasheet, we will offer a refund or replacement. For full details of the Abpromise, please visit <https://www.abcam.com/abpromise> or contact our technical team.

### Terms and conditions

- Guarantee only valid for products bought direct from Abcam or one of our authorized distributors