




Product datasheet

Anti-Mov10 antibody [15C1B8] ab176687

[3 References](#) [3 Images](#)

Overview

Product name	Anti-Mov10 antibody [15C1B8]
Description	Mouse monoclonal [15C1B8] to Mov10
Host species	Mouse
Tested applications	Suitable for: WB, IP, IHC-Fr
Species reactivity	Reacts with: Mouse, Human Predicted to work with: Cow, Dog, Chimpanzee, Rhesus monkey, Gorilla, Orangutan 
Immunogen	Synthetic peptide within Human Mov10 aa 953-1003. The exact sequence is proprietary. NP_066014.1. Sequence: LDLQQGQNLQGLSKLSPSTSGPHSHDYLPQEREGEGGL SLQVEPEWRNE L Database link: Q9HCE1  Run BLAST with  Run BLAST with
Positive control	WB: NIH3T3, 293T, HeLa and Jurkat lysate. IHC-Fr: Human testicular seminoma tissue.
General notes	<p>The Life Science industry has been in the grips of a reproducibility crisis for a number of years. Abcam is leading the way in addressing this with our range of recombinant monoclonal antibodies and knockout edited cell lines for gold-standard validation. Please check that this product meets your needs before purchasing.</p> <p>If you have any questions, special requirements or concerns, please send us an inquiry and/or contact our Support team ahead of purchase. Recommended alternatives for this product can be found below, along with publications, customer reviews and Q&As</p>

Properties

Form	Liquid
Storage instructions	Shipped at 4°C. Store at +4°C short term (1-2 weeks). Upon delivery aliquot. Store at -20°C long term. Avoid freeze / thaw cycle.
Storage buffer	pH: 6.8 Preservative: 0.09% Sodium azide Constituents: 99% Tris buffered saline, 0.1% BSA

Purity	Immunogen affinity purified
Clonality	Monoclonal
Clone number	15C1B8
Isotype	IgG1
Light chain type	kappa

Applications

The Abpromise guarantee Our **Abpromise guarantee** covers the use of ab176687 in the following tested applications. The application notes include recommended starting dilutions; optimal dilutions/concentrations should be determined by the end user.

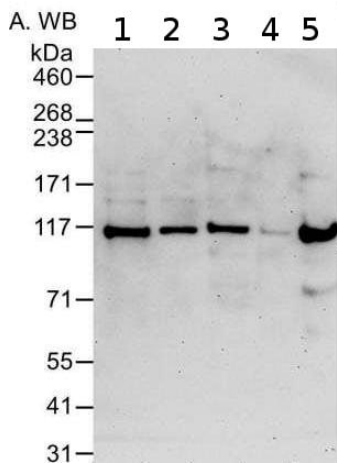
Application	Abreviews	Notes
WB		1/1000 - 1/10000. Predicted molecular weight: 114 kDa.
IP		Use at 2-5 µg/mg of lysate.
IHC-Fr		1/20 - 1/80. Epitope retrieval with citrate buffer pH 6.0 is recommended for FFPE tissue sections.

Target

Relevance MOV10 may be an helicase with an important function in development and/or control of cell proliferation. RNA silencing processes are guided by small RNAs known as siRNAs and microRNAs (miRNAs). They reside in ribonucleoprotein complexes, which guide the cleavage of complementary mRNAs or affect stability and translation of partial complementary mRNAs. Argonaute (Ago) proteins are at the heart of silencing effector complexes and bind the single-stranded siRNA and miRNA. Ago1- and Ago2-containing complexes have been purified from human cells, resulting in the discovery of novel factors such as the putative RNA helicase MOV10, and the RNA recognition motif (RRM)-containing protein TNRC6B/KIAA1093. The new proteins localize, similar to Ago proteins, to mRNA-degrading cytoplasmic P bodies, and they are functionally required to mediate miRNA-guided mRNA cleavage.

Cellular localization Cytoplasmic

Images



Western blot - Anti-Mov10 antibody [15C1B8] (ab176687)

All lanes : Anti-Mov10 antibody [15C1B8] (ab176687) at 0.1 µg/ml

Lane 1 : Mouse NIH-3T3 lysate at 50 µg

Lane 2 : Mouse NIH-3T3 lysate at 15 µg

Lane 3 : 293T lysate at 50 µg

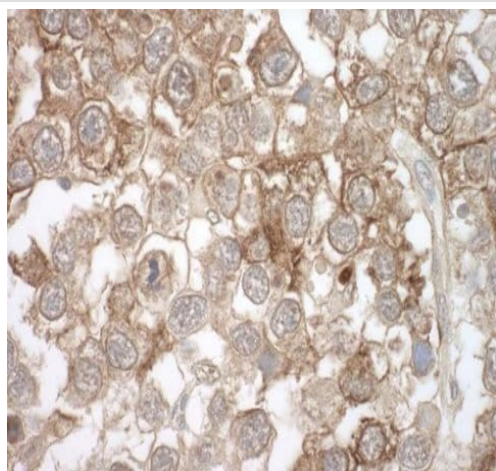
Lane 4 : HeLa lysate at 50 µg

Lane 5 : Jurkat lysate at 50 µg

Developed using the ECL technique.

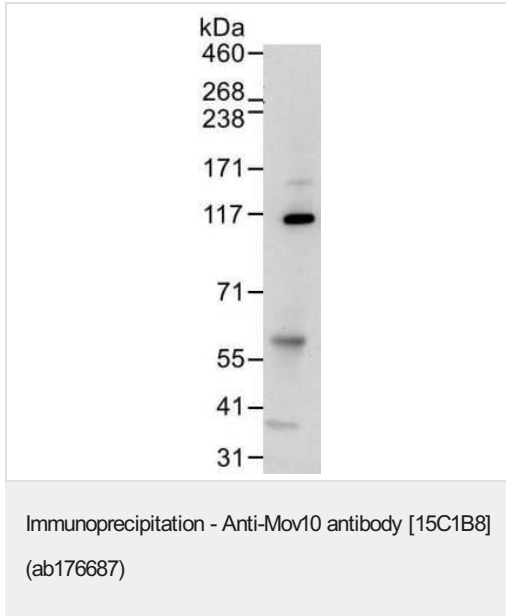
Predicted band size: 114 kDa

Exposure time: 3 minutes



Immunohistochemistry (Frozen sections) - Anti-Mov10 antibody [15C1B8] (ab176687)

Immunohistochemical analysis of frozen sections of Human testicular seminoma tissue labeling Mov10 with ab176687 at a 1/1000 dilution. DAB staining.



Detection of Human Mov10 by Western Blot of Immunoprecipitates.
1 mg for IP; 20% of IP Mouse NIH3T3 whole cell lysate loaded.
ab176687 used for IP at 6 µg/mg lysate. For blotting
immunoprecipitated Mov10, ab176687 was used at 1 µg/ml.

Please note: All products are "FOR RESEARCH USE ONLY. NOT FOR USE IN DIAGNOSTIC PROCEDURES"

Our Abpromise to you: Quality guaranteed and expert technical support

- Replacement or refund for products not performing as stated on the datasheet
- Valid for 12 months from date of delivery
- Response to your inquiry within 24 hours
- We provide support in Chinese, English, French, German, Japanese and Spanish
- Extensive multi-media technical resources to help you
- We investigate all quality concerns to ensure our products perform to the highest standards

If the product does not perform as described on this datasheet, we will offer a refund or replacement. For full details of the Abpromise, please visit <https://www.abcam.com/abpromise> or contact our technical team.

Terms and conditions

- Guarantee only valid for products bought direct from Abcam or one of our authorized distributors