




Product datasheet

Anti-MPP2/DLG2 antibody ab231634

[3 References](#) [6 Images](#)

Overview

Product name	Anti-MPP2/DLG2 antibody
Description	Rabbit polyclonal to MPP2/DLG2
Host species	Rabbit
Tested applications	Suitable for: ICC/IF, IHC-P, WB
Species reactivity	Reacts with: Mouse, Human Predicted to work with: Rat 
Immunogen	Recombinant fragment (His-T7-tag) corresponding to Mouse MPP2/DLG2 aa 1-250. (Expressed in E.coli). Database link: Q9WV34 <div>  Run BLAST with  Run BLAST with </div>
Positive control	WB: Mouse cerebrum and kidney lysates; Recombinant mouse MPP2/DLG2 protein. IHC-P: Mouse esophagus tissue. ICC/IF: A549 cells.
General notes	<p>The Life Science industry has been in the grips of a reproducibility crisis for a number of years. Abcam is leading the way in addressing this with our range of recombinant monoclonal antibodies and knockout edited cell lines for gold-standard validation. Please check that this product meets your needs before purchasing.</p> <p>If you have any questions, special requirements or concerns, please send us an inquiry and/or contact our Support team ahead of purchase. Recommended alternatives for this product can be found below, along with publications, customer reviews and Q&As</p>

Properties

Form	Liquid
Storage instructions	Shipped at 4°C. Store at +4°C short term (1-2 weeks). Upon delivery aliquot. Store at -20°C long term. Avoid freeze / thaw cycle.
Storage buffer	pH: 7.40 Preservative: 0.02% Sodium azide Constituents: 44.12% PBS, 55.77% Glycerol (glycerin, glycerine)
Purity	Immunogen affinity purified
Purification notes	ab231634 was purified by antigen-specific affinity chromatography followed by Protein A affinity chromatography.

Clonality	Polyclonal
Isotype	IgG

Applications

The Abpromise guarantee Our **Abpromise guarantee** covers the use of ab231634 in the following tested applications. The application notes include recommended starting dilutions; optimal dilutions/concentrations should be determined by the end user.

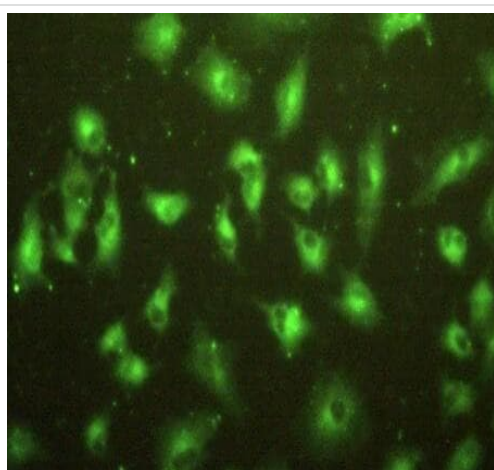
Application	Abreviews	Notes
ICC/IF		Use a concentration of 5 - 20 µg/ml.
IHC-P		Use a concentration of 5 - 20 µg/ml.
WB		Use a concentration of 0.2 - 2 µg/ml. Predicted molecular weight: 62 kDa.

Target

Relevance MPP2/DLG2 (Palmitoylated membrane protein 2) is a member of a family of membrane associated proteins termed MAGUKs (membrane associated guanylate kinase homologs). These proteins interact with the cytoskeleton and regulate cell proliferation, signaling pathways, and intracellular junctions. MPP2/DLG2 contains a conserved sequence, called the SH3 (src homology 3) motif, found in several other proteins that associate with the cytoskeleton and are suspected to play important roles in signal transduction.

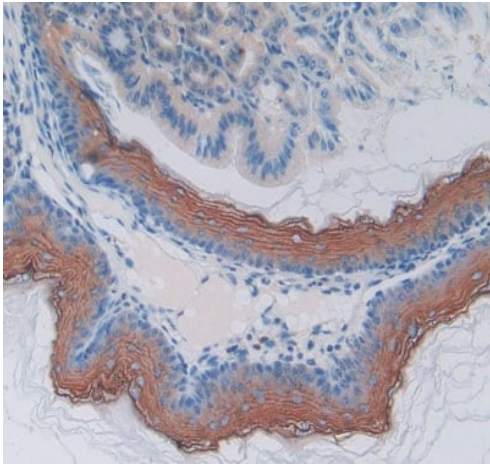
Cellular localization Cell Membrane; integral membrane protein

Images



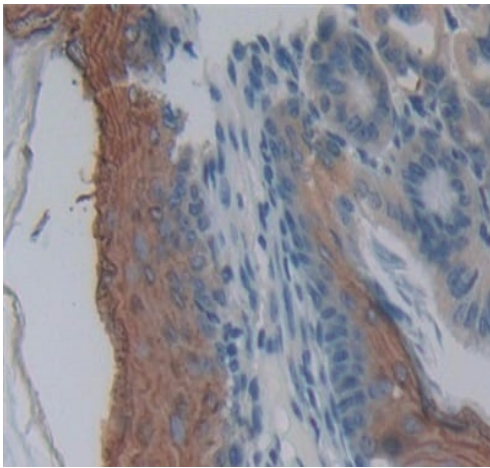
A4549 (Human lung carcinoma cell line) cells stained for MPP2/DLG2 using ab231634 at 20 µg/ml in ICC/IF.

Immunocytochemistry/ Immunofluorescence - Anti-MPP2/DLG2 antibody (ab231634)



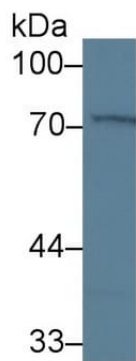
Immunohistochemistry (Formalin/PFA-fixed paraffin-embedded sections) - Anti-MPP2/DLG2 antibody (ab231634)

Formalin-fixed, paraffin-embedded mouse esophagus tissue stained for MPP2/DLG2 using ab231634 at 10 µg/ml in immunohistochemical analysis.



Immunohistochemistry (Formalin/PFA-fixed paraffin-embedded sections) - Anti-MPP2/DLG2 antibody (ab231634)

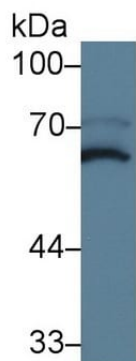
Formalin-fixed, paraffin-embedded mouse esophagus tissue stained for MPP2/DLG2 using ab231634 at 10 µg/ml in immunohistochemical analysis.



Western blot - Anti-MPP2/DLG2 antibody
(ab231634)

Anti-MPP2/DLG2 antibody (ab231634) at 2 µg/ml + Mouse kidney lysate

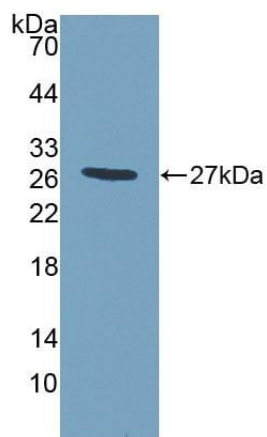
Predicted band size: 62 kDa



Western blot - Anti-MPP2/DLG2 antibody
(ab231634)

Anti-MPP2/DLG2 antibody (ab231634) at 2 µg/ml + Mouse cerebrum lysate

Predicted band size: 62 kDa



Western blot - Anti-MPP2/DLG2 antibody
(ab231634)

Anti-MPP2/DLG2 antibody (ab231634) at 2 µg/ml + Recombinant mouse MPP2/DLG2 protein

Predicted band size: 62 kDa

Please note: All products are "FOR RESEARCH USE ONLY. NOT FOR USE IN DIAGNOSTIC PROCEDURES"

Our Abpromise to you: Quality guaranteed and expert technical support

- Replacement or refund for products not performing as stated on the datasheet
- Valid for 12 months from date of delivery
- Response to your inquiry within 24 hours

- We provide support in Chinese, English, French, German, Japanese and Spanish
- Extensive multi-media technical resources to help you
- We investigate all quality concerns to ensure our products perform to the highest standards

If the product does not perform as described on this datasheet, we will offer a refund or replacement. For full details of the Abpromise, please visit <https://www.abcam.com/abpromise> or contact our technical team.

Terms and conditions

- Guarantee only valid for products bought direct from Abcam or one of our authorized distributors