

Product datasheet

Anti-MRP1 antibody [MRPr1] ab3368

★★★★★ [2 Abreviews](#) [17 References](#) [3 Images](#)

Overview

Product name	Anti-MRP1 antibody [MRPr1]
Description	Rat monoclonal [MRPr1] to MRP1
Host species	Rat
Specificity	This antibody detects MRP 1. It does not cross-react with the human MDR 1 and MDR 3 P glycoprotein gene products.
Tested applications	Suitable for: WB, IHC-Fr, IHC-P, ICC/IF
Species reactivity	Reacts with: Human
Immunogen	Fusion protein corresponding to MRP1. Bacterial fusion protein of MRP containing a segment of 168 amino acids in the amino-proximal half of the protein.
Epitope	Internal epitope.
Positive control	Cell Lines: Drug-sensitive parental cell lines and their multidrug-resistant derivatives. Tissue section: Breast carcinoma, liver.
General notes	<p>The Life Science industry has been in the grips of a reproducibility crisis for a number of years. Abcam is leading the way in addressing this with our range of recombinant monoclonal antibodies and knockout edited cell lines for gold-standard validation. Please check that this product meets your needs before purchasing.</p> <p>If you have any questions, special requirements or concerns, please send us an inquiry and/or contact our Support team ahead of purchase. Recommended alternatives for this product can be found below, along with publications, customer reviews and Q&As</p>

Properties

Form	Liquid
Storage instructions	Shipped at 4°C. Store at +4°C short term (1-2 weeks). Store at -20°C or -80°C. Avoid freeze / thaw cycle.
Storage buffer	Preservative: 0.1% Sodium azide Constituents: 0.7% BSA, Tissue culture supernatant, PBS
Purity	Tissue culture supernatant
Clonality	Monoclonal
Clone number	MRPr1

Applications

The Abpromise guarantee

Our **Abpromise guarantee** covers the use of ab3368 in the following tested applications.

The application notes include recommended starting dilutions; optimal dilutions/concentrations should be determined by the end user.

Application	Abreviews	Notes
WB	★★★★★ (1)	Use at an assay dependent concentration.
IHC-Fr		Use at an assay dependent concentration.
IHC-P	★★★★★ (1)	Use at an assay dependent concentration.
ICC/IF		Use a concentration of 5 µg/ml.

Target

Function

Mediates export of organic anions and drugs from the cytoplasm. Mediates ATP-dependent transport of glutathione and glutathione conjugates, leukotriene C4, estradiol-17-beta-o-glucuronide, methotrexate, antiviral drugs and other xenobiotics. Confers resistance to anticancer drugs. Hydrolyzes ATP with low efficiency.

Tissue specificity

Lung, testis and peripheral blood mononuclear cells.

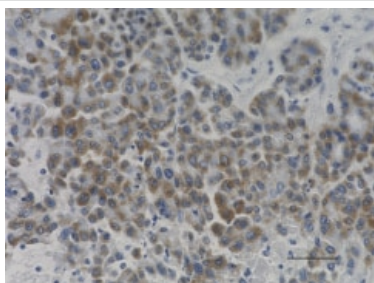
Sequence similarities

Belongs to the ABC transporter superfamily. ABCC family. Conjugate transporter (TC 3.A.1.208) subfamily.
Contains 2 ABC transmembrane type-1 domains.
Contains 2 ABC transporter domains.

Cellular localization

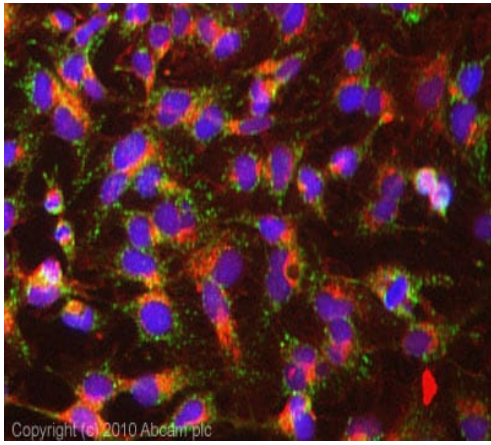
Cell membrane.

Images



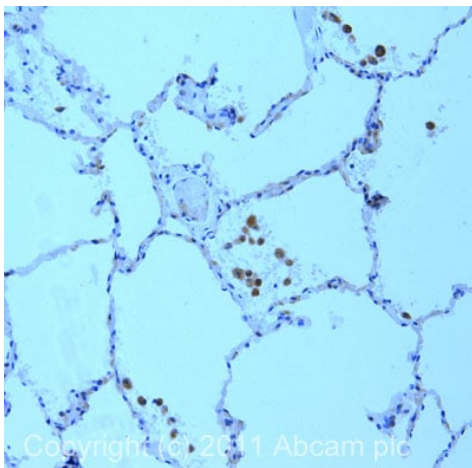
Immunohistochemistry (Formalin/PFA-fixed paraffin-embedded sections) - Anti-MRP1 antibody [MRPr1] (ab3368)

IHC staining of ab3368 on formalin-fixed paraffin-embedded human liver tissue. Following antigen retrieval using Sodium Citrate H.I.E.R., the tissue was incubated with a 1/20 dilution of the primary antibody for 60 minutes at room temperature. After incubation with biotinylated anti-rat antibody, the tissue was labeled with BioLegend's HRP labeling reagent followed by addition of DAB chromogen for detection and hematoxylin counterstaining, according to the protocol provided. The image was captured with a 40X objective. Scale bar 50 µm



Immunocytochemistry/ Immunofluorescence - Anti-MRP1 antibody [MRP1] (ab3368)

ICC/IF image of ab3368 stained HepG2 cells. The cells were 100% methanol fixed (5 min) and then incubated in 1%BSA / 10% normal goat serum / 0.3M glycine in 0.1% PBS-Tween for 1h to permeabilise the cells and block non-specific protein-protein interactions. The cells were then incubated with the antibody (ab3368, 5µg/ml) overnight at +4°C. The secondary antibody (green) was Alexa Fluor® 488 goat anti-rat IgG (H+L) used at a 1/1000 dilution for 1h. Alexa Fluor® 594 WGA was used to label plasma membranes (red) at a 1/200 dilution for 1h. DAPI was used to stain the cell nuclei (blue) at a concentration of 1.43µM.



Immunohistochemistry (Formalin/PFA-fixed paraffin-embedded sections) - Anti-MRP1 antibody [MRP1] (ab3368)

IHC image of ab3368 staining in human lung formalin fixed paraffin embedded tissue section, performed on a Leica Bond™ system using the standard protocol B. The section was pre-treated using heat mediated antigen retrieval with sodium citrate buffer (pH6, epitope retrieval solution 1) for 20 mins. The section was then incubated with ab3368, 1µg/ml, for 15 mins at room temperature and detected using an HRP conjugated compact polymer system. DAB was used as the chromogen. The section was then counterstained with haematoxylin and mounted with DPX.

For other IHC staining systems (automated and non-automated) customers should optimize variable parameters such as antigen retrieval conditions, primary antibody concentration and antibody incubation times.

Please note: All products are "FOR RESEARCH USE ONLY. NOT FOR USE IN DIAGNOSTIC PROCEDURES"

Our Abpromise to you: Quality guaranteed and expert technical support

- Replacement or refund for products not performing as stated on the datasheet
- Valid for 12 months from date of delivery
- Response to your inquiry within 24 hours
- We provide support in Chinese, English, French, German, Japanese and Spanish
- Extensive multi-media technical resources to help you
- We investigate all quality concerns to ensure our products perform to the highest standards

If the product does not perform as described on this datasheet, we will offer a refund or replacement. For full details of the Abpromise, please visit <https://www.abcam.com/abpromise> or contact our technical team.

Terms and conditions

- Guarantee only valid for products bought direct from Abcam or one of our authorized distributors