


Product datasheet

Anti-MRP2 antibody [M2 III-6] ab3373

KO VALIDATED

★★★★☆ 7 Abreviews 83 References 2 Images

Overview

| | |
|---------------------|---|
| Product name | Anti-MRP2 antibody [M2 III-6] |
| Description | Mouse monoclonal [M2 III-6] to MRP2 |
| Host species | Mouse |
| Specificity | This antibody detects MRP 2. It does not cross-react with human MDR 1, MRP 1, MRP 3 or MRP 5 gene products. |
| Tested applications | Suitable for: WB |
| Species reactivity | Reacts with: Human Predicted to work with: Dog  |
| Immunogen | Recombinant fragment within Human MRP2 aa 1300-1550 (C terminal). The exact immunogen sequence used to generate this antibody is proprietary information. If additional detail on the immunogen is needed to determine the suitability of the antibody for your needs, please contact our Scientific Support team to discuss your requirements. |
| Epitope | This antibody reacts with an internal epitope of MRP 2. |
| General notes | <p>We received mixed feedback about rat species so we are removing this from tested species list for now. The immunogen is 84% homologous to human protein so theoretically it should cross react however considering the latest customer feedback we no longer guarantee this species.</p> <p>The Life Science industry has been in the grips of a reproducibility crisis for a number of years. Abcam is leading the way in addressing this with our range of recombinant monoclonal antibodies and knockout edited cell lines for gold-standard validation. Please check that this product meets your needs before purchasing.</p> <p>If you have any questions, special requirements or concerns, please send us an inquiry and/or contact our Support team ahead of purchase. Recommended alternatives for this product can be found below, along with publications, customer reviews and Q&As</p> |

Properties

| | |
|----------------------|--|
| Form | Liquid |
| Storage instructions | Shipped at 4°C. Upon delivery aliquot. Store at +4°C. Avoid freeze / thaw cycle. |
| Storage buffer | pH: 7.30 |

| | |
|---------------------|----------------------------------|
| | Preservative: 0.02% Sodium azide |
| | Constituent: 0.1% BSA |
| Clonality | Monoclonal |
| Clone number | M2 III-6 |
| Isotype | IgG2a |

Applications

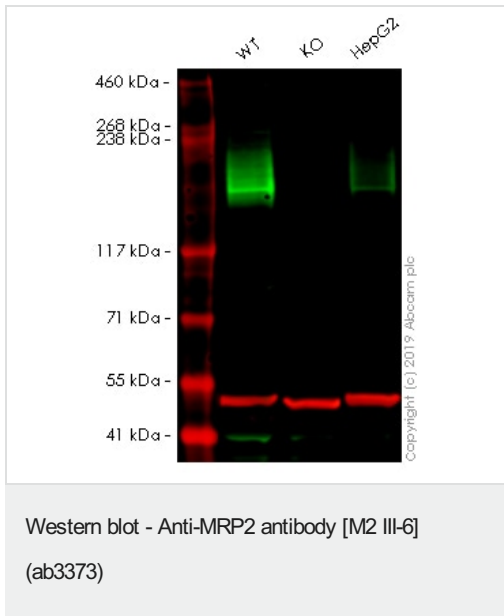
The Abpromise guarantee Our **Abpromise guarantee** covers the use of ab3373 in the following tested applications. The application notes include recommended starting dilutions; optimal dilutions/concentrations should be determined by the end user.

| Application | Abreviews | Notes |
|-------------|-----------|--|
| WB | ★★★★★ (4) | <p>1/20 - 1/50. Predicted molecular weight: 174 kDa. See Scheffer GL et al. 2000.</p> <p>The samples MUST NOT be boiled before running the gel as multi-pass transmembrane proteins, like MRP2, aggregate severely at high temperatures, which increases as a direct function of temperature. We recommend heating the samples at 60-70C for 15-20 minutes or at 36C for 20 minutes as mentioned</p> |

Target

| | |
|-------------------------------|--|
| Function | Mediates hepatobiliary excretion of numerous organic anions. May function as a cellular cisplatin transporter. |
| Tissue specificity | Found on the apical membrane of polarized cells in liver, kidney and intestine. The highest expression is found in liver. |
| Involvement in disease | Defects in ABCC2 are the cause of Dubin-Johnson syndrome (DJS) [MIM:237500]. DJS is an autosomal recessive disorder characterized by conjugated hyperbilirubinemia, an increase in the urinary excretion of coproporphyrin isomer I, deposition of melanin-like pigment in hepatocytes, and prolonged retention of sulfobromophthalein, but otherwise normal liver function. |
| Sequence similarities | <p>Belongs to the ABC transporter superfamily. ABCC family. Conjugate transporter (TC 3.A.1.208) subfamily.</p> <p>Contains 2 ABC transmembrane type-1 domains.</p> <p>Contains 2 ABC transporter domains.</p> |
| Cellular localization | Membrane. |

Images



All lanes : Anti-MRP2 antibody [M2 III-6] (ab3373) at 1/20 dilution

Lane 1 : Wild-type A549 (Human lung carcinoma cell line) whole cell lysate

Lane 2 : ABCC2 knockout A549 (Human lung carcinoma cell line) whole cell lysate

Lane 3 : Hep G2 (Human liver hepatocellular carcinoma cell line) whole cell lysate

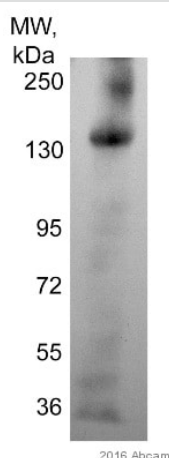
Lysates/proteins at 20 µg per lane.

Performed under reducing conditions.

Predicted band size: 174 kDa

Lanes 1 - 3: Merged signal (red and green). Green - ab3373 observed at 210 kDa. Red - loading control, [ab52866](#), observed at 50 kDa.

ab3373 was shown to recognize ABCC2 in wild-type A549 cells as signal was lost at the expected MW in ABCC2 knockout cells. Additional cross-reactive bands were observed in the wild-type and knockout cells. Wild-type and ABCC2 knockout samples were subjected to SDS-PAGE. The membrane was blocked with 3% Milk. Ab3373 and [ab52866](#) (Rabbit anti-alpha Tubulin loading control) were incubated overnight at 4°C at 1/20 dilution and 1/20000 dilution respectively. Blots were developed with Goat anti-Mouse IgG H&L (IRDye® 800CW) preabsorbed [ab216772](#) and Goat anti-Rabbit IgG H&L (IRDye® 680RD) preabsorbed [ab216777](#) secondary antibodies at 1/20000 dilution for 1 hour at room temperature before imaging.



Western blot - Anti-MRP2 antibody [M2 III-6]

(ab3373)

This image is courtesy of an anonymous Abreview

Anti-MRP2 antibody [M2 III-6] (ab3373) at 1/500 dilution + WIF-B cells, the hepatoma-derived hybrid cell line at 30 µg with 5% milk in PBST

Secondary

HRP conjugated Donkey anti-Mouse at 1/10000 dilution

Developed using the ECL technique.

Predicted band size: 174 kDa

Observed band size: 130-250 kDa

Exposure time: 20 minutes

Please note: All products are "FOR RESEARCH USE ONLY. NOT FOR USE IN DIAGNOSTIC PROCEDURES"

Our Abpromise to you: Quality guaranteed and expert technical support

- Replacement or refund for products not performing as stated on the datasheet
- Valid for 12 months from date of delivery
- Response to your inquiry within 24 hours
- We provide support in Chinese, English, French, German, Japanese and Spanish
- Extensive multi-media technical resources to help you
- We investigate all quality concerns to ensure our products perform to the highest standards

If the product does not perform as described on this datasheet, we will offer a refund or replacement. For full details of the Abpromise, please visit <https://www.abcam.com/abpromise> or contact our technical team.

Terms and conditions

- Guarantee only valid for products bought direct from Abcam or one of our authorized distributors