



## Product datasheet

### Anti-MRP6/ARA antibody ab167564

[1 Image](#)

#### Overview

<b>Product name</b>	Anti-MRP6/ARA antibody
<b>Description</b>	Mouse polyclonal to MRP6/ARA
<b>Host species</b>	Mouse
<b>Tested applications</b>	<b>Suitable for:</b> WB
<b>Species reactivity</b>	<b>Reacts with:</b> Human
<b>Immunogen</b>	Recombinant full length protein within Human MRP6/ARA aa 1-100. The exact immunogen sequence used to generate this antibody is proprietary information. If additional detail on the immunogen is needed to determine the suitability of the antibody for your needs, please <a href="#">contact</a> our Scientific Support team to discuss your requirements. NP_001072996.1 Database link: <a href="#">O95255-2</a>
	 <a href="#">Run BLAST with</a>  <a href="#">Run BLAST with</a>
<b>Positive control</b>	MRP6/ARA transfected 293T cell lysate.
<b>General notes</b>	<p>The Life Science industry has been in the grips of a reproducibility crisis for a number of years. Abcam is leading the way in addressing this with our range of recombinant monoclonal antibodies and knockout edited cell lines for gold-standard validation. Please check that this product meets your needs before purchasing.</p> <p>If you have any questions, special requirements or concerns, please send us an inquiry and/or contact our Support team ahead of purchase. Recommended alternatives for this product can be found below, along with publications, customer reviews and Q&amp;As</p>

#### Properties

<b>Form</b>	Liquid
<b>Storage instructions</b>	Shipped at 4°C. Store at +4°C short term (1-2 weeks). Upon delivery aliquot. Store at -20°C long term.
<b>Storage buffer</b>	pH: 7.4 Constituent: 99% PBS
<b>Purity</b>	Protein A purified
<b>Clonality</b>	Polyclonal
<b>Isotype</b>	IgG

## Applications

### The Abpromise guarantee

Our **Abpromise guarantee** covers the use of ab167564 in the following tested applications.

The application notes include recommended starting dilutions; optimal dilutions/concentrations should be determined by the end user.

Application	Abreviews	Notes
WB		Use a concentration of 1 µg/ml. Predicted molecular weight: 11 kDa.

## Target

### Function

May participate directly in the active transport of drugs into subcellular organelles or influence drug distribution indirectly. Transports glutathione conjugates as leukotriene-c4 (LTC4) and N-ethylmaleimide S-glutathione (NEM-GS).

### Tissue specificity

Expressed in kidney and liver. Very low expression in other tissues.

### Involvement in disease

Defects in ABCC6 are the cause of pseudoxanthoma elasticum (PXE) [MIM:264800]. PXE is a disorder characterized by calcification of elastic fibers in skin, arteries and retina that results in dermal lesions with associated laxity and loss of elasticity, arterial insufficiency and retinal hemorrhages leading to macular degeneration. PXE is caused in the overwhelming majority of cases by homozygous or compound heterozygous mutations in the ABCC6 gene (autosomal recessive PXE). Individuals carrying heterozygous mutations express limited manifestations of the pseudoxanthoma elasticum phenotype (autosomal dominant PXE).

### Sequence similarities

Belongs to the ABC transporter superfamily. ABCC family. Conjugate transporter (TC 3.A.1.208) subfamily.

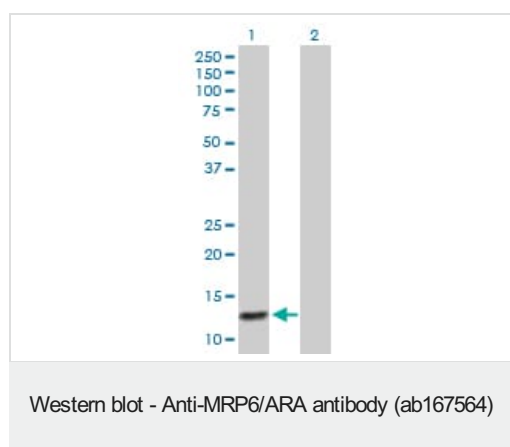
Contains 2 ABC transmembrane type-1 domains.

Contains 2 ABC transporter domains.

### Cellular localization

Membrane. Localized to the basolateral membrane.

## Images



**All lanes :** Anti-MRP6/ARA antibody (ab167564) at 1 µg/ml

**Lane 1 :** MRP6/ARA transfected 293T cell lysate

**Lane 2 :** Non-transfected 293T cell line

Lysates/proteins at 15 µl per lane.

### Secondary

**All lanes :** Goat Anti-Mouse IgG (H&L)-HRP at 1/2500 dilution

**Predicted band size:** 11 kDa

**Please note:** All products are "FOR RESEARCH USE ONLY. NOT FOR USE IN DIAGNOSTIC PROCEDURES"

### **Our Abpromise to you: Quality guaranteed and expert technical support**

---

- Replacement or refund for products not performing as stated on the datasheet
- Valid for 12 months from date of delivery
- Response to your inquiry within 24 hours
  
- We provide support in Chinese, English, French, German, Japanese and Spanish
- Extensive multi-media technical resources to help you
- We investigate all quality concerns to ensure our products perform to the highest standards

If the product does not perform as described on this datasheet, we will offer a refund or replacement. For full details of the Abpromise, please visit <https://www.abcam.com/abpromise> or contact our technical team.

### **Terms and conditions**

---

- Guarantee only valid for products bought direct from Abcam or one of our authorized distributors