



Anti-MRPL1 antibody ab232886

[4 Images](#)

Overview

Product name	Anti-MRPL1 antibody
Description	Rabbit polyclonal to MRPL1
Host species	Rabbit
Tested applications	Suitable for: ICC/IF, IHC-P, WB
Species reactivity	Reacts with: Human
Immunogen	Recombinant fragment (His-T7-tag) corresponding to Human MRPL1 aa 100-300. N-terminal tags. Expressed in E. coli. Database link: Q9BYD6
	 Run BLAST with  Run BLAST with
Positive control	ICC/IF: HepG2 cells. IHC-P: Human lung cancer tissue. WB: Recombinant human MRPL1 protein. MCF7 and HepG2 cell lysate.
General notes	<p>The Life Science industry has been in the grips of a reproducibility crisis for a number of years. Abcam is leading the way in addressing this with our range of recombinant monoclonal antibodies and knockout edited cell lines for gold-standard validation. Please check that this product meets your needs before purchasing.</p> <p>If you have any questions, special requirements or concerns, please send us an inquiry and/or contact our Support team ahead of purchase. Recommended alternatives for this product can be found below, along with publications, customer reviews and Q&As</p>

Properties

Form	Liquid
Storage instructions	Shipped at 4°C. Store at +4°C short term (1-2 weeks). Upon delivery aliquot. Store at -20°C long term. Avoid freeze / thaw cycle.
Storage buffer	pH: 7.40 Preservative: 0.011% Proclin 300 Constituents: 55.77% Glycerol (glycerin, glycerine), 44.219% PBS
Purity	Protein A purified
Purification notes	Antigen-specific affinity chromatography followed by Protein A affinity chromatography.
Clonality	Polyclonal
Isotype	IgG

Applications

The Abpromise guarantee

Our **Abpromise guarantee** covers the use of ab232886 in the following tested applications.

The application notes include recommended starting dilutions; optimal dilutions/concentrations should be determined by the end user.

Application	Abreviews	Notes
ICC/IF		Use a concentration of 5 - 20 µg/ml.
IHC-P		Use a concentration of 5 - 20 µg/ml.
WB		Use a concentration of 0.5 - 2 µg/ml. Predicted molecular weight: 37 kDa.

Target

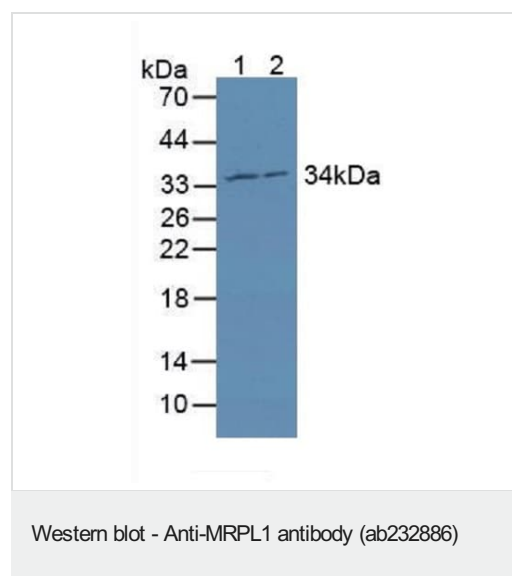
Sequence similarities

Belongs to the ribosomal protein L1P family.

Cellular localization

Mitochondrion.

Images



All lanes : Anti-MRPL1 antibody (ab232886) at 1 µg/ml

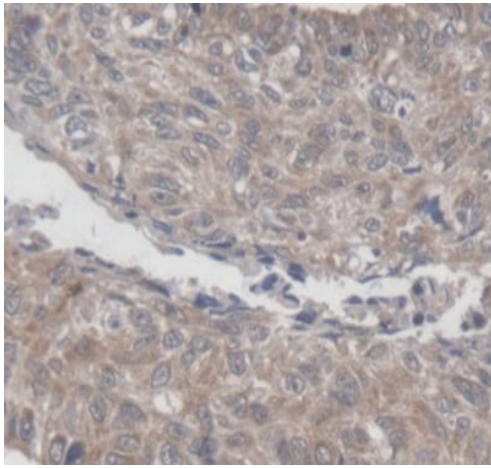
Lane 1 : MCF7 (human breast adenocarcinoma cell line) cell lysate

Lane 2 : HepG2 (human liver hepatocellular carcinoma cell line) cell lysate

Secondary

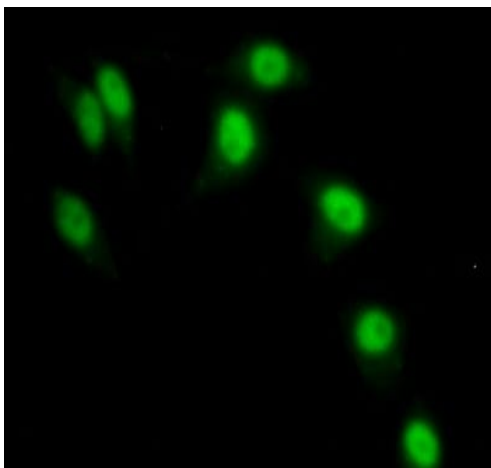
All lanes : HRP-linked Guinea pig anti-Rabbit at 1/2000 dilution

Predicted band size: 37 kDa



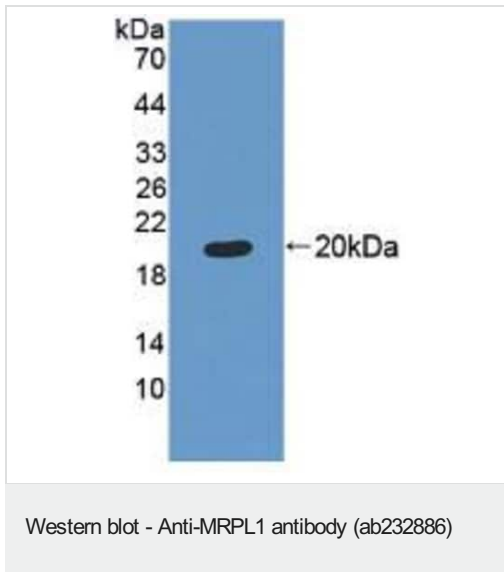
Immunohistochemistry (Formalin/PFA-fixed paraffin-embedded sections) - Anti-MRPL1 antibody (ab232886)

Formalin-fixed, paraffin-embedded human lung cancer tissue stained for MRPL1 with ab232886 at 20 µg/ml in immunohistochemical analysis. DAB staining.



Immunocytochemistry/ Immunofluorescence - Anti-MRPL1 antibody (ab232886)

HepG2 (Human liver hepatocellular carcinoma cell line) cells stained for MRPL1 using ab232886 at 20 µg/ml in ICC/IF. FITC stained.



Anti-MRPL1 antibody (ab232886) at 2 µg/ml + Recombinant human MRPL1 protein

Predicted band size: 37 kDa

Please note: All products are "FOR RESEARCH USE ONLY. NOT FOR USE IN DIAGNOSTIC PROCEDURES"

Our Abpromise to you: Quality guaranteed and expert technical support

- Replacement or refund for products not performing as stated on the datasheet
- Valid for 12 months from date of delivery
- Response to your inquiry within 24 hours
- We provide support in Chinese, English, French, German, Japanese and Spanish
- Extensive multi-media technical resources to help you
- We investigate all quality concerns to ensure our products perform to the highest standards

If the product does not perform as described on this datasheet, we will offer a refund or replacement. For full details of the Abpromise, please visit <https://www.abcam.com/abpromise> or contact our technical team.

Terms and conditions

- Guarantee only valid for products bought direct from Abcam or one of our authorized distributors