

Anti-MRPS18B antibody [EPR19298] ab191891

Recombinant **RabMAb**

8 Images

Overview

Product name	Anti-MRPS18B antibody [EPR19298]
Description	Rabbit monoclonal [EPR19298] to MRPS18B
Host species	Rabbit
Tested applications	Suitable for: ICC/IF, IP, WB
Species reactivity	Reacts with: Mouse, Rat, Human
Immunogen	Recombinant full length protein. This information is proprietary to Abcam and/or its suppliers.
Positive control	WB: Human fetal liver, fetal heart and fetal kidney lysates; Mouse heart, kidney and spleen lysates; and Rat kidney and liver lysates. MCF7, HeLa, Jurkat, HepG2, C6, RAW 264.7, NIH/3T3 whole cell lysates. ICC/IF: HeLa and MCF7 cell lines. IP: MCF7 whole cell lysate.
General notes	<p>This product is a recombinant monoclonal antibody, which offers several advantages including:</p> <ul style="list-style-type: none"> - High batch-to-batch consistency and reproducibility - Improved sensitivity and specificity - Long-term security of supply - Animal-free production <p>For more information see here.</p> <p>Our RabMAb[®] technology is a patented hybridoma-based technology for making rabbit monoclonal antibodies. For details on our patents, please refer to RabMAb[®] patents.</p>

Properties

Form	Liquid
Storage instructions	Shipped at 4°C. Store at +4°C short term (1-2 weeks). Upon delivery aliquot. Store at -20°C long term. Avoid freeze / thaw cycle.
Storage buffer	<p>pH: 7.2</p> <p>Preservative: 0.01% Sodium azide</p> <p>Constituents: 59% PBS, 40% Glycerol (glycerin, glycerine), 0.05% BSA</p>
Purity	Protein A purified
Clonality	Monoclonal
Clone number	EPR19298

IsotypeIgG

Applications

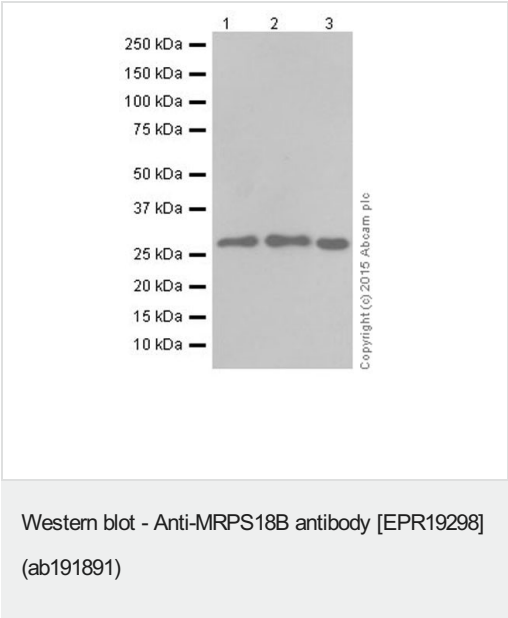
The **Abpromise guarantee** Our **Abpromise guarantee** covers the use of ab191891 in the following tested applications. The application notes include recommended starting dilutions; optimal dilutions/concentrations should be determined by the end user.

Application	Abreviews	Notes
ICC/IF		1/1000.
IP		1/40.
WB		1/2000. Detects a band of approximately 29 kDa (predicted molecular weight: 29 kDa).

Target

Sequence similarities Belongs to the ribosomal protein S18P family.
Cellular localization Mitochondrion.

Images



All lanes : Anti-MRPS18B antibody [EPR19298] (ab191891) at 1/2000 dilution

Lane 1 : Human fetal liver lysate

Lane 2 : Human fetal heart lysate

Lane 3 : Human fetal kidney lysate

Lysates/proteins at 10 µg per lane.

Secondary

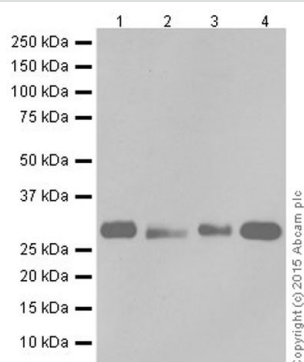
All lanes : Goat Anti-Rabbit IgG Peroxidase Conjugate, specific to the non-reduced form of IgG at 1/10000 dilution

Predicted band size: 29 kDa

Observed band size: 29 kDa

Exposure time: 3 minutes

5% NFDM/TBST: Blocking and dilution buffer.



Western blot - Anti-MRPS18B antibody [EPR19298]
(ab191891)

All lanes : Anti-MRPS18B antibody [EPR19298] (ab191891) at 1/2000 dilution

Lane 1 : MCF7 (Human breast adenocarcinoma cell line) whole cell lysate

Lane 2 : HeLa (Human epithelial cell line from cervix adenocarcinoma) whole cell lysate

Lane 3 : Jurkat (Human T cell leukemia cell line from peripheral blood) whole cell lysate

Lane 4 : HepG2 (Human liver hepatocellular carcinoma cell line) whole cell lysate

Lysates/proteins at 20 µg per lane.

Secondary

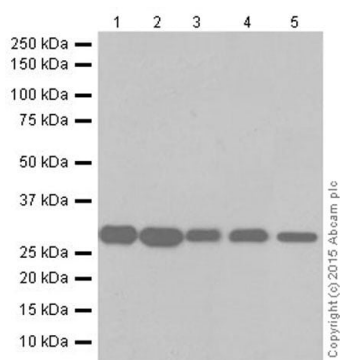
All lanes : Goat Anti-Rabbit IgG H&L (HRP) ([ab97051](#)) at 1/100000 dilution

Predicted band size: 29 kDa

Observed band size: 29 kDa

Exposure time: 3 minutes

5% NFDM/TBST: Blocking and dilution buffer.



Western blot - Anti-MRPS18B antibody [EPR19298]
(ab191891)

All lanes : Anti-MRPS18B antibody [EPR19298] (ab191891) at 1/2000 dilution

Lane 1 : Mouse heart tissue lysate

Lane 2 : Mouse kidney tissue lysate

Lane 3 : Mouse spleen tissue lysate

Lane 4 : Rat kidney tissue lysate

Lane 5 : Rat spleen tissue lysate

Lysates/proteins at 10 µg per lane.

Secondary

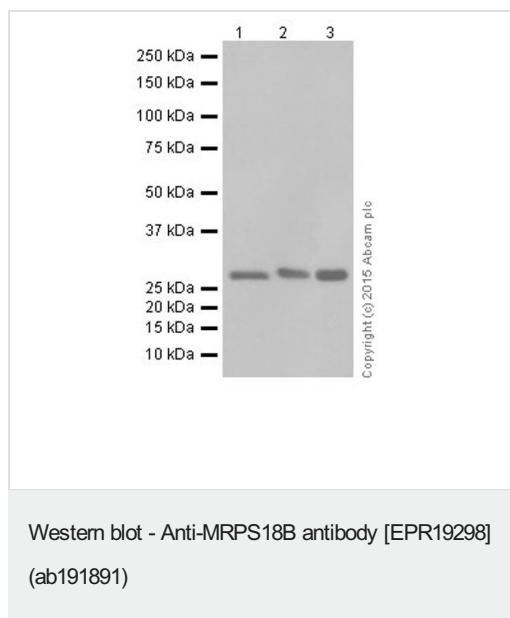
All lanes : Goat Anti-Rabbit IgG H&L (HRP) ([ab97051](#)) at 1/100000 dilution

Predicted band size: 29 kDa

Observed band size: 29 kDa

Exposure time: 3 minutes

5% NFDM/TBST: Blocking and dilution buffer.



All lanes : Anti-MRPS18B antibody [EPR19298] (ab191891) at 1/2000 dilution

Lane 1 : C6 (Rat glial tumor cell line) whole cell lysate

Lane 2 : RAW 264.7 (Mouse macrophage cell line transformed with Abelson murine leukemia virus) whole cell lysate

Lane 3 : NIH/3T3 (Mouse embryonic fibroblast cell line) whole cell lysate

Lysates/proteins at 10 µg per lane.

Secondary

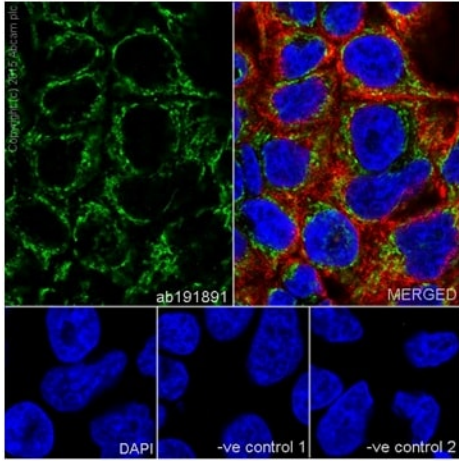
All lanes : Goat Anti-Rabbit IgG H&L (HRP) (**ab97051**) at 1/100000 dilution

Predicted band size: 29 kDa

Observed band size: 29 kDa

Exposure time: 15 seconds

5% NFDM/TBST: Blocking and dilution buffer.



Immunocytochemistry/ Immunofluorescence - Anti-MRPS18B antibody [EPR19298] (ab191891)

Immunofluorescent analysis of 4% paraformaldehyde-fixed, 0.1% Triton X-100 permeabilized HeLa (Human epithelial cell line from cervix adenocarcinoma) cell line labeling MRPS18B with ab191891 at 1/1000 dilution, followed by Goat Anti-Rabbit IgG H&L (Alexa Fluor® 488) (**ab150077**) secondary antibody at 1/1000 dilution (green).

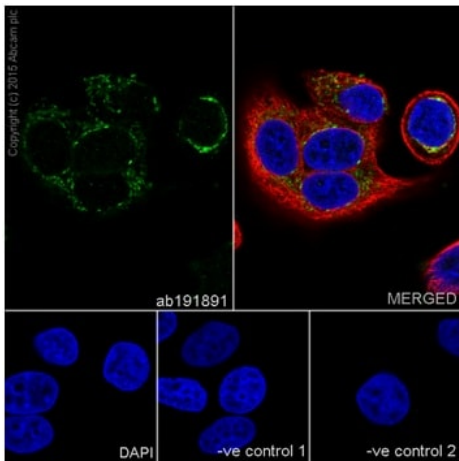
Confocal image showing cytoplasmic staining on HeLa cell line.

The nuclear counter stain is DAPI (blue).

Tubulin is detected with Anti-alpha Tubulin antibody [DM1A] - Loading Control (**ab7291**) at 1/1000 dilution and Goat Anti-Mouse IgG H&L (Alexa Fluor® 594) preadsorbed (**ab150120**) at 1/1000 dilution (red).

The negative controls are as follows:

1. ab191891 at 1/1000 dilution followed by **ab150120** at 1/1000 dilution.
2. **ab7291** at 1/1000 dilution followed by **ab150077** at 1/1000 dilution.



Immunocytochemistry/ Immunofluorescence - Anti-MRPS18B antibody [EPR19298] (ab191891)

Immunofluorescent analysis of 4% paraformaldehyde-fixed, 0.1% Triton X-100 permeabilized MCF7 (Human breast adenocarcinoma cell line) cell line labeling MRPS18B with ab191891 at 1/1000 dilution, followed by Goat Anti-Rabbit IgG H&L (Alexa Fluor® 488) (**ab150077**) secondary antibody at 1/1000 dilution (green).

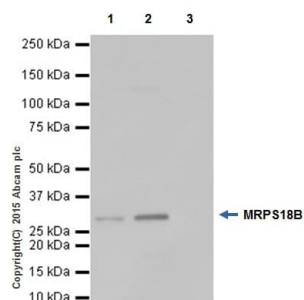
Confocal image showing cytoplasmic staining on MCF7 cell line.

The nuclear counter stain is DAPI (blue).

Tubulin is detected with Anti-alpha Tubulin antibody [DM1A] - Loading Control (**ab7291**) at 1/1000 dilution and Goat Anti-Mouse IgG H&L (Alexa Fluor® 594) preadsorbed (**ab150120**) at 1/1000 dilution (red).

The negative controls are as follows:

1. ab191891 at 1/1000 dilution followed by **ab150120** at 1/1000 dilution.
2. **ab7291** at 1/1000 dilution followed by **ab150077** at 1/1000 dilution.



Immunoprecipitation - Anti-MRPS18B antibody
[EPR19298] (ab191891)

MRPS18B was immunoprecipitated from 1 mg of MCF7 (Human breast adenocarcinoma cell line) whole cell lysate with ab191891 at 1/40 dilution.

Western blot was performed from the immunoprecipitate using ab191891 at 1/1000 dilution.

VeriBlot for IP Detection Reagent (HRP) ([ab131366](#)), was used for detection at 1/10000 dilution.

Lane 1: MCF7 whole cell lysate, 10ug (Input).

Lane 2: ab191891 IP in MCF7 whole cell lysate.

Lane 3: Rabbit IgG, monoclonal [EPR25A] - Isotype Control

([ab172730](#)) instead of ab191891 in MCF7 whole cell lysate.

Blocking and dilution buffer and concentration: 5% NFDm/TBST.

Exposure time: 3 seconds.

Why choose a recombinant antibody?



Research with confidence
Consistent and reproducible results



Long-term and scalable supply
Recombinant technology



Success from the first experiment
Confirmed specificity



Ethical standards compliant
Animal-free production

Anti-MRPS18B antibody [EPR19298] (ab191891)

Please note: All products are "FOR RESEARCH USE ONLY. NOT FOR USE IN DIAGNOSTIC PROCEDURES"

Our Abpromise to you: Quality guaranteed and expert technical support

- Replacement or refund for products not performing as stated on the datasheet
- Valid for 12 months from date of delivery
- Response to your inquiry within 24 hours

- We provide support in Chinese, English, French, German, Japanese and Spanish
- Extensive multi-media technical resources to help you
- We investigate all quality concerns to ensure our products perform to the highest standards

If the product does not perform as described on this datasheet, we will offer a refund or replacement. For full details of the Abpromise, please visit <https://www.abcam.com/abpromise> or contact our technical team.

Terms and conditions

- Guarantee only valid for products bought direct from Abcam or one of our authorized distributors