

## Product datasheet

### Anti-MS2 antibody [MM0079-6J12] $\alpha$ b89127

[1 References](#) [1 Image](#)

#### Overview

<b>Product name</b>	Anti-MS2 antibody [MM0079-6J12]
<b>Description</b>	Mouse monoclonal [MM0079-6J12] to MS2
<b>Host species</b>	Mouse
<b>Tested applications</b>	<b>Suitable for:</b> WB
<b>Species reactivity</b>	<b>Reacts with:</b> Human
<b>Immunogen</b>	Recombinant fragment corresponding to Human MS2 (extracellular).
<b>Positive control</b>	WB: Human placenta tissue lysate.
<b>General notes</b>	<p>The Life Science industry has been in the grips of a reproducibility crisis for a number of years. Abcam is leading the way in addressing this with our range of recombinant monoclonal antibodies and knockout edited cell lines for gold-standard validation. Please check that this product meets your needs before purchasing.</p> <p>If you have any questions, special requirements or concerns, please send us an inquiry and/or contact our Support team ahead of purchase. Recommended alternatives for this product can be found below, along with publications, customer reviews and Q&amp;As</p>

#### Properties

<b>Form</b>	Liquid
<b>Storage instructions</b>	Shipped at 4°C. Upon delivery aliquot and store at -20°C or -80°C. Avoid repeated freeze / thaw cycles.
<b>Storage buffer</b>	Constituent: PBS
<b>Purity</b>	Protein G purified
<b>Clonality</b>	Monoclonal
<b>Clone number</b>	MM0079-6J12
<b>Isotype</b>	IgG1

#### Applications

The **Abpromise guarantee** Our **Abpromise guarantee** covers the use of ab89127 in the following tested applications.

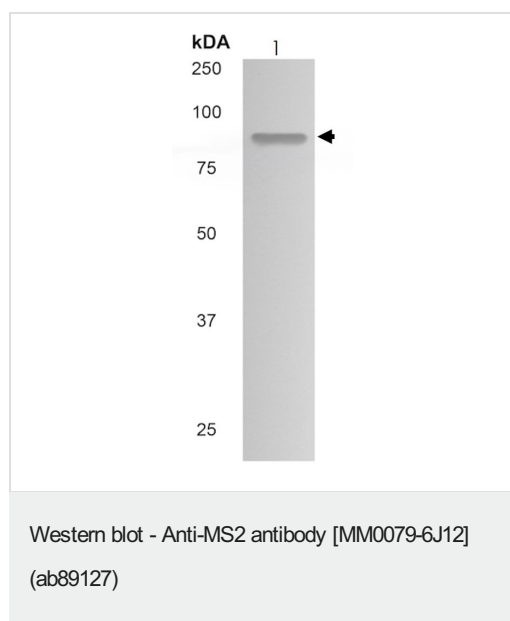
The application notes include recommended starting dilutions; optimal dilutions/concentrations should be determined by the end user.

Application	Abreviews	Notes
WB		1/500 - 1/1000. Predicted molecular weight: 89 kDa.

## Target

Function	Possible involvement in extravasation of leukocytes.
Tissue specificity	Expressed on neutrophils and monocytes.
Sequence similarities	Contains 1 disintegrin domain. Contains 1 EGF-like domain. Contains 1 peptidase M12B domain.
Cellular localization	Membrane.

## Images



Anti-MS2 antibody [MM0079-6J12] (ab89127) at 1/500 dilution +  
Human placenta tissue lysate

**Predicted band size:** 89 kDa

**Observed band size:** 88 kDa

**Please note:** All products are "FOR RESEARCH USE ONLY. NOT FOR USE IN DIAGNOSTIC PROCEDURES"

## Our Abpromise to you: Quality guaranteed and expert technical support

- Replacement or refund for products not performing as stated on the datasheet
- Valid for 12 months from date of delivery
- Response to your inquiry within 24 hours
- We provide support in Chinese, English, French, German, Japanese and Spanish
- Extensive multi-media technical resources to help you
- We investigate all quality concerns to ensure our products perform to the highest standards

If the product does not perform as described on this datasheet, we will offer a refund or replacement. For full details of the Abpromise, please visit <https://www.abcam.com/abpromise> or contact our technical team.

#### **Terms and conditions**

---

- Guarantee only valid for products bought direct from Abcam or one of our authorized distributors