


Product datasheet

Anti-MSI2 antibody ab114107

[1 References](#) [1 Image](#)

Overview

Product name	Anti-MSI2 antibody
Description	Rabbit polyclonal to MSI2
Host species	Rabbit
Tested applications	Suitable for: IP
Species reactivity	Reacts with: Human Predicted to work with: Mouse, Guinea pig, Ferret, Lizard, Rhesus monkey, Gorilla, Orangutan 
Immunogen	Synthetic peptide, corresponding to a region between amino acids 250-300 of Human MSI2 (NP_620412.1).
Positive control	HeLa whole cell lysate (ab150035).
General notes	<p>The Life Science industry has been in the grips of a reproducibility crisis for a number of years. Abcam is leading the way in addressing this with our range of recombinant monoclonal antibodies and knockout edited cell lines for gold-standard validation. Please check that this product meets your needs before purchasing.</p> <p>If you have any questions, special requirements or concerns, please send us an inquiry and/or contact our Support team ahead of purchase. Recommended alternatives for this product can be found below, along with publications, customer reviews and Q&As</p>

Properties

Form	Liquid
Storage instructions	Shipped at 4°C. Upon delivery aliquot and store at -20°C. Avoid freeze / thaw cycles.
Storage buffer	pH: 7 Preservative: 0.09% Sodium azide Constituent: 99% Tris citrate/phosphate pH 7 to 8
Purity	Immunogen affinity purified
Purification notes	ab114107 was affinity purified using an epitope specific to MSI2 immobilized on solid support.
Clonality	Polyclonal

Isotype IgG

Applications

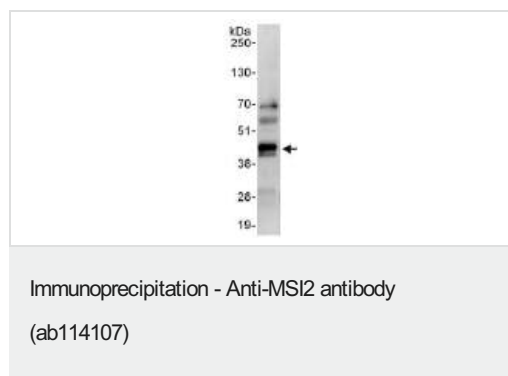
The Abpromise guarantee Our **Abpromise guarantee** covers the use of ab114107 in the following tested applications. The application notes include recommended starting dilutions; optimal dilutions/concentrations should be determined by the end user.

Application	Abreviews	Notes
IP		Use at 2-10 µg/mg of lysate.

Target

Function	RNA binding protein that regulates the expression of target mRNAs at the translation level. May play a role in the proliferation and maintenance of stem cells in the central nervous system.
Tissue specificity	Ubiquitous; detected at low levels.
Involvement in disease	Note=Chromosomal aberrations involving MSI2 may contribute to disease progression in chronic myeloid leukemia. Translocation t(7;17)(p15;q23) with HOXA9; translocation t(7;17)(q32-34;q23).
Sequence similarities	Belongs to the Musashi family. Contains 2 RRM (RNA recognition motif) domains.
Post-translational modifications	Phosphorylated.
Cellular localization	Cytoplasm. Associated with polysomes.

Images



Detection of Human MSI2 by Western blot of Immunoprecipitate. MSI2 was immunoprecipitated from HeLa whole cell lysate, using ab114107 at 6 µg/mg lysate (1 mg for IP, 20% of IP loaded). ab114107 was used for the subsequent WB at 1 µg/ml. Detection: Chemiluminescence with an exposure time of 30 seconds.

Please note: All products are "FOR RESEARCH USE ONLY. NOT FOR USE IN DIAGNOSTIC PROCEDURES"

Our Abpromise to you: Quality guaranteed and expert technical support

- Replacement or refund for products not performing as stated on the datasheet
- Valid for 12 months from date of delivery
- Response to your inquiry within 24 hours

- We provide support in Chinese, English, French, German, Japanese and Spanish
- Extensive multi-media technical resources to help you
- We investigate all quality concerns to ensure our products perform to the highest standards

If the product does not perform as described on this datasheet, we will offer a refund or replacement. For full details of the Abpromise, please visit <https://www.abcam.com/abpromise> or contact our technical team.

Terms and conditions

- Guarantee only valid for products bought direct from Abcam or one of our authorized distributors