

Product datasheet

Anti-MT2-MMP antibody [MM0028-5D11] ab56308

[1 References](#) [2 Images](#)

Overview

Product name	Anti-MT2-MMP antibody [MM0028-5D11]
Description	Mouse monoclonal [MM0028-5D11] to MT2-MMP
Host species	Mouse
Specificity	ab56308 recognizes human MT2-MMP in western blot without cross reactivity with human MMP14/16. Reactivity with MT2-MMP in other species has not been tested.
Tested applications	Suitable for: WB, IHC-P
Species reactivity	Reacts with: Human
Immunogen	Recombinant full length protein corresponding to Human MT2-MMP.
Positive control	WB: Human placenta tissue lysate. IHC-P: Human placenta tissue.
General notes	<p>The Life Science industry has been in the grips of a reproducibility crisis for a number of years. Abcam is leading the way in addressing this with our range of recombinant monoclonal antibodies and knockout edited cell lines for gold-standard validation. Please check that this product meets your needs before purchasing.</p> <p>If you have any questions, special requirements or concerns, please send us an inquiry and/or contact our Support team ahead of purchase. Recommended alternatives for this product can be found below, along with publications, customer reviews and Q&As</p>

Properties

Form	Liquid
Storage instructions	Shipped at 4°C. Upon delivery aliquot and store at -20°C. Avoid freeze / thaw cycles.
Storage buffer	Constituent: PBS
Purity	Protein G purified
Clonality	Monoclonal
Clone number	MM0028-5D11
Isotype	IgG1

Applications

The Abpromise guarantee

Our **Abpromise guarantee** covers the use of ab56308 in the following tested applications.

The application notes include recommended starting dilutions; optimal dilutions/concentrations should be determined by the end user.

Application	Abreviews	Notes
WB		1/400 - 1/1000. Predicted molecular weight: 76 kDa.
IHC-P		1/50 - 1/200.

Target

Function

Endopeptidase that degrades various components of the extracellular matrix. May activate progelatinase A.

Tissue specificity

Appeared to be synthesized preferentially in liver, placenta, testis, colon and intestine. Substantial amounts are also detected in pancreas, kidney, lung, heart and skeletal muscle.

Sequence similarities

Belongs to the peptidase M10A family.
Contains 4 hemopexin-like domains.

Domain

The conserved cysteine present in the cysteine-switch motif binds the catalytic zinc ion, thus inhibiting the enzyme. The dissociation of the cysteine from the zinc ion upon the activation-peptide release activates the enzyme.

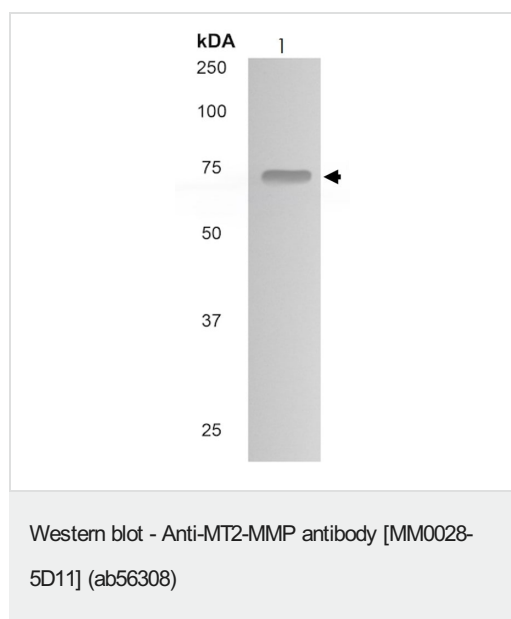
Post-translational modifications

The precursor is cleaved by a furin endopeptidase.

Cellular localization

Membrane.

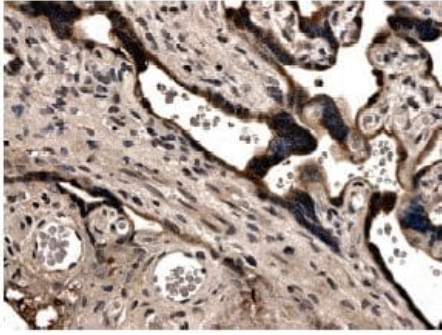
Images



Anti-MT2-MMP antibody [MM0028-5D11] (ab56308) at 1/400 dilution + Human placenta tissue lysate

Predicted band size: 76 kDa

Observed band size: 72 kDa



ab56308 at 1/200 dilution, staining MT2-MMP in human placental tissue section by Immunohistochemistry (Formalin/PFA fixed paraffin-embedded sections).

Immunohistochemistry (Formalin/PFA-fixed paraffin-embedded sections) - Anti-MT2-MMP antibody [MM0028-5D11] (ab56308)

Please note: All products are "FOR RESEARCH USE ONLY. NOT FOR USE IN DIAGNOSTIC PROCEDURES"

Our Abpromise to you: Quality guaranteed and expert technical support

- Replacement or refund for products not performing as stated on the datasheet
- Valid for 12 months from date of delivery
- Response to your inquiry within 24 hours
- We provide support in Chinese, English, French, German, Japanese and Spanish
- Extensive multi-media technical resources to help you
- We investigate all quality concerns to ensure our products perform to the highest standards

If the product does not perform as described on this datasheet, we will offer a refund or replacement. For full details of the Abpromise, please visit <https://www.abcam.com/abpromise> or contact our technical team.

Terms and conditions

- Guarantee only valid for products bought direct from Abcam or one of our authorized distributors