


## Product datasheet

### Anti-MTA1 antibody ab71153

★★★★★ [10 Abreviews](#) [41 References](#) [4 Images](#)

#### Overview

<b>Product name</b>	Anti-MTA1 antibody
<b>Description</b>	Rabbit polyclonal to MTA1
<b>Host species</b>	Rabbit
<b>Tested applications</b>	<b>Suitable for:</b> WB, IP, IHC-P
<b>Species reactivity</b>	<b>Reacts with:</b> Mouse, Human <b>Predicted to work with:</b> Rat, Rabbit, Horse, Guinea pig, Rhesus monkey, Gorilla, Chinese hamster, Orangutan, Xenopus tropicalis, Platypus 
<b>Immunogen</b>	A synthetic peptide corresponding to a region between residue 665 and the C-terminus (residue 715) of MTA1 (NP_004680.1).
<b>General notes</b>	<p>The Life Science industry has been in the grips of a reproducibility crisis for a number of years. Abcam is leading the way in addressing this with our range of recombinant monoclonal antibodies and knockout edited cell lines for gold-standard validation. Please check that this product meets your needs before purchasing.</p> <p>If you have any questions, special requirements or concerns, please send us an inquiry and/or contact our Support team ahead of purchase. Recommended alternatives for this product can be found below, along with publications, customer reviews and Q&amp;As</p>

#### Properties

<b>Form</b>	Liquid
<b>Storage instructions</b>	Shipped at 4°C. Upon delivery aliquot and store at -20°C. Avoid freeze / thaw cycles.
<b>Storage buffer</b>	pH: 6.8 Preservative: 0.09% Sodium azide Constituents: 0.1% BSA, Tris buffered saline
<b>Purity</b>	Immunogen affinity purified
<b>Clonality</b>	Polyclonal
<b>Isotype</b>	IgG

#### Applications

## The Abpromise guarantee

Our **Abpromise guarantee** covers the use of ab71153 in the following tested applications.

The application notes include recommended starting dilutions; optimal dilutions/concentrations should be determined by the end user.

Application	Abreviews	Notes
WB		Use a concentration of 0.1 µg/ml. Detects a band of approximately 35, 81 kDa (predicted molecular weight: 81 kDa).
IP		Use at 2-5 µg/mg of lysate.
IHC-P	★★★★★ (5)	1/500 - 1/2000. Perform heat mediated antigen retrieval with citrate buffer pH 6 before commencing with IHC staining protocol.

## Target

### Function

May be involved in the regulation of gene expression by covalent modification of histone proteins. Isoform Long is a corepressor of estrogen receptor (ER). Isoform Short binds to ER and sequesters it in the cytoplasm and enhances non-genomic responses of ER.

### Tissue specificity

Widely expressed. High expression in brain, ovaries, adrenal glands and virgin mammary glands. Higher in tumors than in adjacent normal tissue from the same individual.

### Sequence similarities

Contains 1 BAH domain.  
Contains 1 ELM2 domain.  
Contains 1 GATA-type zinc finger.  
Contains 1 SANT domain.

### Developmental stage

Highly expressed in metastatic cells.

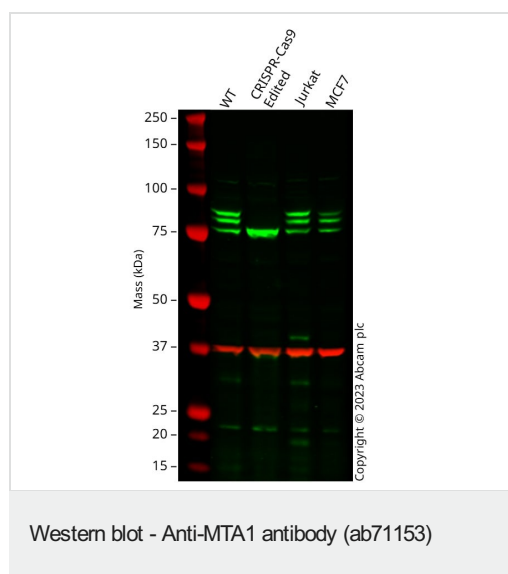
### Domain

Isoform Short contains a Leu-Arg-Ile-Leu-Leu motif (ER binding motif).

### Cellular localization

Cytoplasm and Nucleus.

## Images



**All lanes :** Anti-MTA1 antibody (ab71153) at 1/2000 dilution

**Lane 1 :** Wild-type HEK-293 cell lysate

**Lane 2 :** Mta1 CRISPR-Cas9 edited HEK-293 cell lysate

**Lane 3 :** Jurkat cell lysate

**Lane 4 :** MCF7 cell lysate

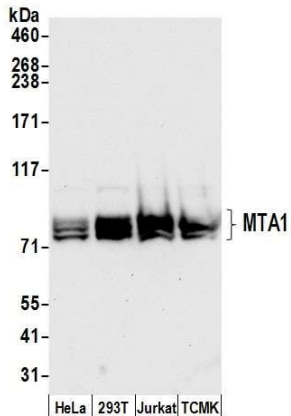
Lysates/proteins at 20 µg per lane.

Performed under reducing conditions.

**Predicted band size:** 81 kDa

**Observed band size:** 80-85 kDa

False colour image of Western blot: Anti-MTA1 antibody staining at 1/2000 dilution, shown in green; Mouse anti-GAPDH antibody [6C5] ([ab8245](#)) loading control staining at 1/20000 dilution, shown in red. In Western blot, ab71153 was shown to bind specifically to MTA1. A band was observed at 80/85 kDa in wild-type HEK-293 cell lysates with no signal observed at this size in Mta1 CRISPR-Cas9 edited cell line [ab277164](#) (CRISPR-Cas9 edited cell lysate [ab277206](#)). The band observed in the CRISPR-Cas9 edited lysate lane below 80/85 kDa is likely to represent a truncated form of MTA1. This has not been investigated further and the functional properties of the gene product have not been determined. To generate this image, wild-type and Mta1 CRISPR-Cas9 edited HEK-293 cell lysates were analysed. First, samples were run on an SDS-PAGE gel then transferred onto a nitrocellulose membrane. Membranes were blocked in 3% milk in TBS-0.1% Tween<sup>®</sup> 20 (TBS-T) before incubation with primary antibodies overnight at 4 °C. Blots were washed four times in TBS-T, incubated with secondary antibodies for 1 h at room temperature, washed again four times then imaged. Secondary antibodies used were Goat anti-Rabbit IgG H&L 800CW and Goat anti-Mouse IgG H&L 680RD at 1/20000 dilution.



Western blot - Anti-MTA1 antibody (ab71153)

**All lanes :** Anti-MTA1 antibody (ab71153) at 0.1 µg/ml

**Lane 1 :** HeLa whole cell lysate

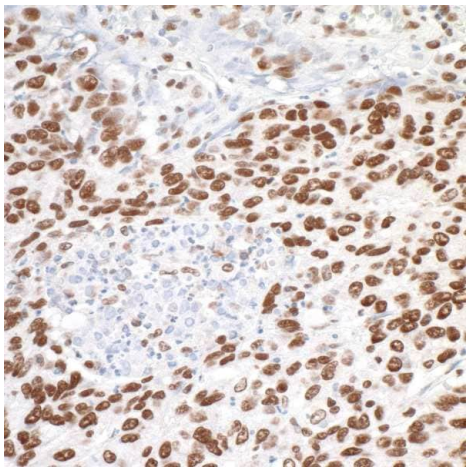
**Lane 2 :** HEK293T whole cell lysate

**Lane 3 :** Jurkat whole cell lysate

**Lane 4 :** TCMK whole cell lysate

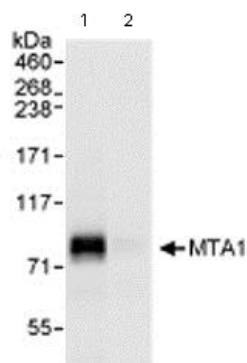
Lysates/proteins at 50 µg per lane.

**Predicted band size:** 81 kDa



Immunohistochemistry (Formalin/PFA-fixed paraffin-embedded sections) analysis of human non-small cell lung cancer tissue labelling MTA1 with ab71153 at 1/1000 (0.2 µg/ml). Detection: DAB.

Immunohistochemistry (Formalin/PFA-fixed paraffin-embedded sections) - Anti-MTA1 antibody (ab71153)



Immunoprecipitation/ Western Blot of MTA1

Lane 1: ab71153 at 3µg/mg whole cell lysate.

Lane 2: Control IgG.

Whole cell lysate from Hela cells at 1mg for IP, 20% of IP loaded.

Subsequent WB detection was performed using 1 µg/ml ab71153.

Chemiluminescence with an exposure time of 1 second.

Immunoprecipitation - Anti-MTA1 antibody (ab71153)

**Please note:** All products are "FOR RESEARCH USE ONLY. NOT FOR USE IN DIAGNOSTIC PROCEDURES"

### Our Abpromise to you: Quality guaranteed and expert technical support

- Replacement or refund for products not performing as stated on the datasheet
- Valid for 12 months from date of delivery

- Response to your inquiry within 24 hours
- We provide support in Chinese, English, French, German, Japanese and Spanish
- Extensive multi-media technical resources to help you
- We investigate all quality concerns to ensure our products perform to the highest standards

If the product does not perform as described on this datasheet, we will offer a refund or replacement. For full details of the Abpromise, please visit <https://www.abcam.com/abpromise> or contact our technical team.

#### **Terms and conditions**

---

- Guarantee only valid for products bought direct from Abcam or one of our authorized distributors