




Product datasheet

Anti-MTCH1/PSAP antibody ab230006

3 Images

Overview

Product name	Anti-MTCH1/PSAP antibody
Description	Rabbit polyclonal to MTCH1/PSAP
Host species	Rabbit
Tested applications	Suitable for: IHC-P, WB
Species reactivity	Reacts with: Human Predicted to work with: Mouse 
Immunogen	Recombinant fragment corresponding to Human MTCH1/PSAP aa 100-250. Database link: Q9NZJ7  Run BLAST with  Run BLAST with
Positive control	WB: MCF7 and HepG2 whole cell lysates. IHC-P: Human liver and brain tissues.
General notes	<p>The Life Science industry has been in the grips of a reproducibility crisis for a number of years. Abcam is leading the way in addressing this with our range of recombinant monoclonal antibodies and knockout edited cell lines for gold-standard validation. Please check that this product meets your needs before purchasing.</p> <p>If you have any questions, special requirements or concerns, please send us an inquiry and/or contact our Support team ahead of purchase. Recommended alternatives for this product can be found below, along with publications, customer reviews and Q&As</p>

Properties

Form	Liquid
Storage instructions	Shipped at 4°C. Store at +4°C short term (1-2 weeks). Upon delivery aliquot. Store at -20°C long term. Avoid freeze / thaw cycle.
Storage buffer	pH: 7.30 Preservative: 0.02% Sodium azide Constituents: PBS, 50% Glycerol (glycerin, glycerine)
Purity	Immunogen affinity purified
Clonality	Polyclonal
Isotype	IgG

Applications

The Abpromise guarantee Our **Abpromise guarantee** covers the use of ab230006 in the following tested applications. The application notes include recommended starting dilutions; optimal dilutions/concentrations should be determined by the end user.

Application	Abreviews	Notes
IHC-P		1/20 - 1/200.
WB		1/1000 - 1/5000. Detects a band of approximately 42 kDa (predicted molecular weight: 42 kDa).

Target

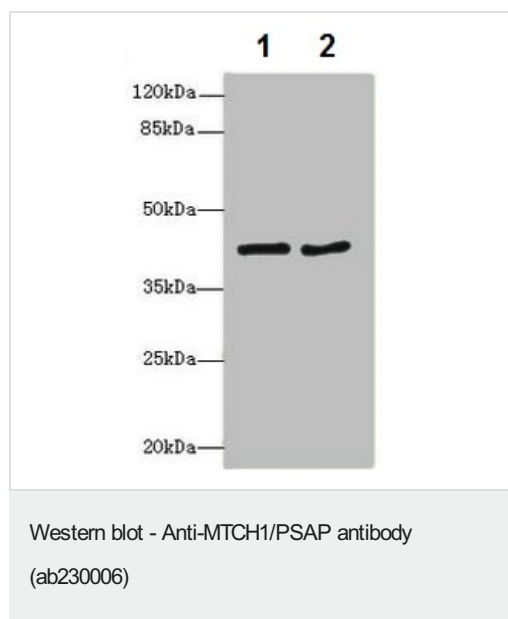
Function Potential mitochondrial transporter. May play a role in apoptosis.

Tissue specificity Widely expressed with a predominant expression in brain.

Sequence similarities Belongs to the mitochondrial carrier family.
Contains 2 Solcar repeats.

Cellular localization Mitochondrion inner membrane.

Images



All lanes : Anti-MTCH1/PSAP antibody (ab230006) at 1/1000 dilution

Lane 1 : MCF7 (human breast adenocarcinoma cell line) whole cell lysate

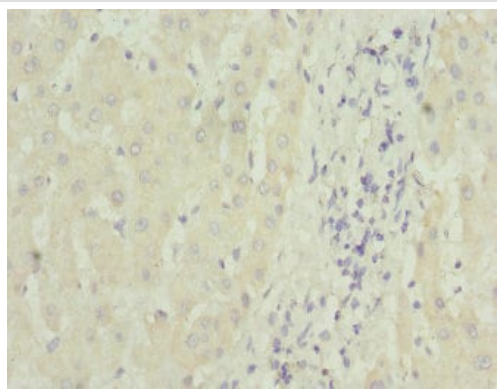
Lane 2 : HepG2 (human liver hepatocellular carcinoma cell line) whole cell lysate

Secondary

All lanes : Goat polyclonal to Rabbit IgG at 1/10000 dilution

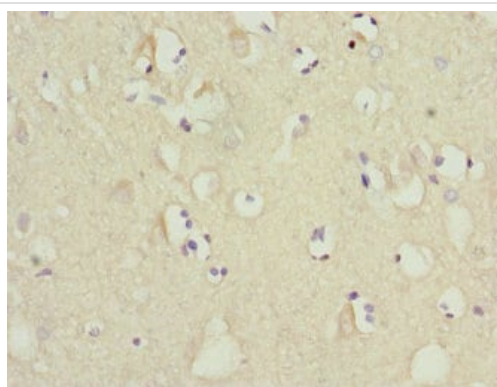
Predicted band size: 42 kDa

Observed band size: 42 kDa



Paraffin-embedded human liver tissue stained for MTCH1/PSAP using ab230006 at 1/100 dilution in immunohistochemical analysis.

Immunohistochemistry (Formalin/PFA-fixed paraffin-embedded sections) - Anti-MTCH1/PSAP antibody (ab230006)



Paraffin-embedded human brain tissue stained for MTCH1/PSAP using ab230006 at 1/100 dilution in immunohistochemical analysis.

Immunohistochemistry (Formalin/PFA-fixed paraffin-embedded sections) - Anti-MTCH1/PSAP antibody (ab230006)

Please note: All products are "FOR RESEARCH USE ONLY. NOT FOR USE IN DIAGNOSTIC PROCEDURES"

Our Abpromise to you: Quality guaranteed and expert technical support

- Replacement or refund for products not performing as stated on the datasheet
- Valid for 12 months from date of delivery
- Response to your inquiry within 24 hours
- We provide support in Chinese, English, French, German, Japanese and Spanish

- Extensive multi-media technical resources to help you
- We investigate all quality concerns to ensure our products perform to the highest standards

If the product does not perform as described on this datasheet, we will offer a refund or replacement. For full details of the Abpromise, please visit <https://www.abcam.com/abpromise> or contact our technical team.

Terms and conditions

- Guarantee only valid for products bought direct from Abcam or one of our authorized distributors