


Product datasheet

Anti-MTERF antibody [EPR14202] ab181836

Recombinant RabMAb

4 Images

Overview

Product name	Anti-MTERF antibody [EPR14202]
Description	Rabbit monoclonal [EPR14202] to MTERF
Host species	Rabbit
Tested applications	Suitable for: Flow Cyt (Intra), IHC-P Unsuitable for: WB
Species reactivity	Reacts with: Mouse, Human Predicted to work with: Rat 
Immunogen	Synthetic peptide. This information is proprietary to Abcam and/or its suppliers.
Positive control	IHC-P: Human liver tissue and Mouse muscle tissue. Flow Cyt (Intra): Jurkat cells.
General notes	This product is a recombinant monoclonal antibody, which offers several advantages including: <ul style="list-style-type: none"> - High batch-to-batch consistency and reproducibility - Improved sensitivity and specificity - Long-term security of supply - Animal-free production For more information see here . Our RabMAb [®] technology is a patented hybridoma-based technology for making rabbit monoclonal antibodies. For details on our patents, please refer to RabMAb[®] patents .

Properties

Form	Liquid
Storage instructions	Shipped at 4°C. Store at +4°C short term (1-2 weeks). Upon delivery aliquot. Store at -20°C long term. Avoid freeze / thaw cycle.
Storage buffer	Preservative: 0.01% Sodium azide Constituents: 40% Glycerol (glycerin, glycerine), 59% PBS, 0.05% BSA
Purity	Protein A purified
Clonality	Monoclonal
Clone number	EPR14202
Isotype	IgG

Applications

The Abpromise guarantee Our **Abpromise guarantee** covers the use of ab181836 in the following tested applications.

The application notes include recommended starting dilutions; optimal dilutions/concentrations should be determined by the end user.

Application	Abreviews	Notes
Flow Cyt (Intra)		1/50. ab172730 - Rabbit monoclonal IgG, is suitable for use as an isotype control with this antibody.
IHC-P		1/250. Perform heat mediated antigen retrieval with citrate buffer pH 6 before commencing with IHC staining protocol.

Application notes Is unsuitable for WB.

Target

Function Transcription termination factor. Binds to a 28 bp region within the tRNA(Leu(uur)) gene at a position immediately adjacent to and downstream of the 16S rRNA gene; this region comprises a tridecamer sequence critical for directing accurate termination. Binds DNA along the major groove and promotes DNA bending and partial unwinding. Promotes base flipping. Probably requires one or more components for termination activity.

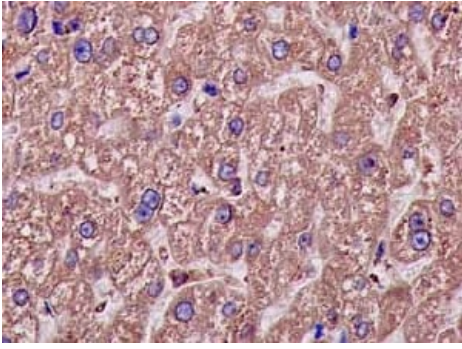
Sequence similarities Belongs to the mTERF family.

Domain Contains nine structural repeats of about 35 residues, where each repeat contains three helices. The repeats form a left-handed superhelical assembly with a solenoid structure that wraps itself around DNA.

Post-translational modifications Phosphoprotein with mostly four phosphate groups. While the DNA-binding activity is unaffected by the phosphorylation state, only the phosphorylated form of the protein is active for termination activity. Functioning seems to be regulated by phosphorylation.

Cellular localization Mitochondrion.

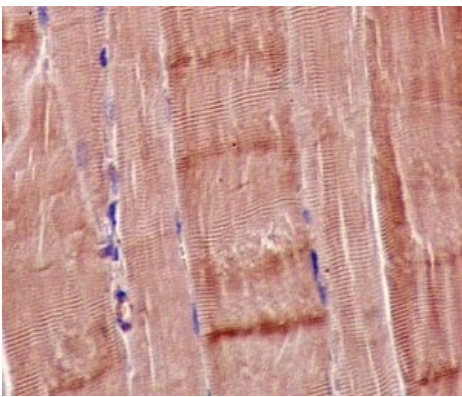
Images



Immunohistochemistry (Formalin/PFA-fixed paraffin-embedded sections) - Anti-MTERF antibody [EPR14202] (ab181836)

Immunohistochemical analysis of paraffin embedded Human liver tissue sections labeling MTERF using ab181836 at a 1/250 dilution. A ready to use HRP Polymer for Rabbit IgG was used as the secondary. Hematoxylin counterstain.

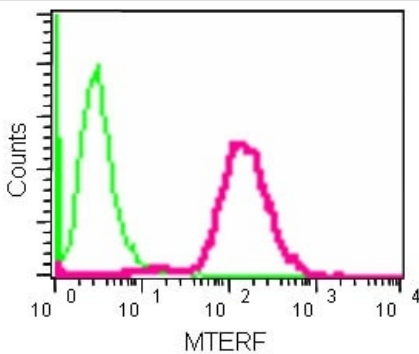
Perform heat mediated antigen retrieval with citrate buffer pH 6 before commencing with IHC staining protocol.



Immunohistochemistry (Formalin/PFA-fixed paraffin-embedded sections) - Anti-MTERF antibody [EPR14202] (ab181836)

Immunohistochemical analysis of paraffin embedded mouse muscle tissue sections labeling MTERF using ab181836 at a 1/250 dilution. A ready to use HRP Polymer for Rabbit IgG was used as the secondary. Hematoxylin counterstain.

Perform heat mediated antigen retrieval with citrate buffer pH 6 before commencing with IHC staining protocol.



Flow Cytometry (Intracellular) - Anti-MTERF antibody [EPR14202] (ab181836)

Intracellular Flow Cytometry analysis of Jurkat cells labeling MTERF using ab181836 at a 1/50 dilution (pink). Goat anti rabbit IgG (FITC) used as the secondary at a 1/150 dilution. Isotype control Rabbit monoclonal IgG (green). Cells were fixed in 2% paraformaldehyde.

Why choose a recombinant antibody?



Research with confidence
Consistent and reproducible results



Long-term and scalable supply
Recombinant technology



Success from the first experiment
Confirmed specificity



Ethical standards compliant
Animal-free production

Anti-MTERF antibody [EPR14202] (ab181836)

Please note: All products are "FOR RESEARCH USE ONLY. NOT FOR USE IN DIAGNOSTIC PROCEDURES"

Our Abpromise to you: Quality guaranteed and expert technical support

- Replacement or refund for products not performing as stated on the datasheet
- Valid for 12 months from date of delivery
- Response to your inquiry within 24 hours
- We provide support in Chinese, English, French, German, Japanese and Spanish
- Extensive multi-media technical resources to help you
- We investigate all quality concerns to ensure our products perform to the highest standards

If the product does not perform as described on this datasheet, we will offer a refund or replacement. For full details of the Abpromise, please visit <https://www.abcam.com/abpromise> or contact our technical team.

Terms and conditions

- Guarantee only valid for products bought direct from Abcam or one of our authorized distributors