

# Anti-MTHFD1 antibody ab70203

[6 References](#) [2 Images](#)

## Overview

<b>Product name</b>	Anti-MTHFD1 antibody
<b>Description</b>	Mouse polyclonal to MTHFD1
<b>Host species</b>	Mouse
<b>Tested applications</b>	<b>Suitable for:</b> WB
<b>Species reactivity</b>	<b>Reacts with:</b> Human
<b>Immunogen</b>	Recombinant full length protein within Human MTHFD1. The exact immunogen sequence used to generate this antibody is proprietary information. If additional detail on the immunogen is needed to determine the suitability of the antibody for your needs, please <b><a href="#">contact</a></b> our Scientific Support team to discuss your requirements.
<b>Positive control</b>	MTHFD1 transfected 293T cell lysate, human placenta cell lysate
<b>General notes</b>	<p>The Life Science industry has been in the grips of a reproducibility crisis for a number of years. Abcam is leading the way in addressing this with our range of recombinant monoclonal antibodies and knockout edited cell lines for gold-standard validation. Please check that this product meets your needs before purchasing.</p> <p>If you have any questions, special requirements or concerns, please send us an inquiry and/or contact our Support team ahead of purchase. Recommended alternatives for this product can be found below, along with publications, customer reviews and Q&amp;As</p>

## Properties

<b>Form</b>	Liquid
<b>Storage instructions</b>	Shipped at 4°C. Upon delivery aliquot and store at -20°C or -80°C. Avoid repeated freeze / thaw cycles.
<b>Storage buffer</b>	pH: 7.40 Constituent: 100% PBS
<b>Purity</b>	Protein G purified
<b>Clonality</b>	Polyclonal
<b>Isotype</b>	IgG

## Applications

## The Abpromise guarantee

Our **Abpromise guarantee** covers the use of ab70203 in the following tested applications.

The application notes include recommended starting dilutions; optimal dilutions/concentrations should be determined by the end user.

Application	Abreviews	Notes
WB		1/500 - 1/1000. Detects a band of approximately 95 kDa (predicted molecular weight: 102 kDa).

## Target

### Tissue specificity

Ubiquitous.

### Pathway

One-carbon metabolism; tetrahydrofolate interconversion.

### Involvement in disease

Defects in MTHFD1 may be a cause of susceptibility to folate-sensitive neural tube defects (folate-sensitive NTD) [MIM:601634]. The most common NTDs are open spina bifida (myelomeningocele) and anencephaly. Genetic defects in MTHFD1 may affect the risk of spina bifida via the maternal rather than the embryonic genotype. Genetic variation in MTHFD1 could be associated with susceptibility to colorectal cancer (CRC) [MIM:114500].

### Sequence similarities

In the N-terminal section; belongs to the tetrahydrofolate dehydrogenase/cyclohydrolase family.  
In the C-terminal section; belongs to the formate--tetrahydrofolate ligase family.

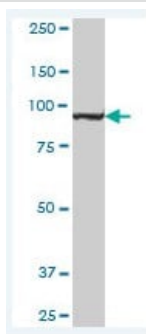
### Domain

This trifunctional enzyme consists of two major domains: an N-terminal part containing the methylene-THF dehydrogenase and cyclohydrolase activities and a larger C-terminal part containing formyl-THF synthetase activity.

### Cellular localization

Cytoplasm.

## Images



Western blot - Anti-MTHFD1 antibody (ab70203)

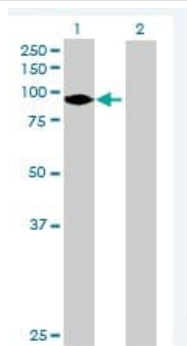
Anti-MTHFD1 antibody (ab70203) at 1/500 dilution + human placenta at 25 µg

### Secondary

Goat Anti-Mouse IgG (H&L)-HRP Conjugate at 1/2500 dilution

**Predicted band size:** 102 kDa

**Observed band size:** 95 kDa



Western blot - Anti-MTHFD1 antibody (ab70203)

**All lanes :** Anti-MTHFD1 antibody (ab70203) at 1/500 dilution

**Lane 1 :** MTHFD1 transfected 293T cell lysate

**Lane 2 :** non transfected 293T cell lysate

Lysates/proteins at 25 µg per lane.

#### Secondary

**All lanes :** Goat Anti-Mouse IgG (H&L)-HRP Conjugate at 1/2500 dilution

**Predicted band size:** 102 kDa

**Observed band size:** 95 kDa

**Please note:** All products are "FOR RESEARCH USE ONLY. NOT FOR USE IN DIAGNOSTIC PROCEDURES"

#### Our Abpromise to you: Quality guaranteed and expert technical support

- Replacement or refund for products not performing as stated on the datasheet
- Valid for 12 months from date of delivery
- Response to your inquiry within 24 hours
- We provide support in Chinese, English, French, German, Japanese and Spanish
- Extensive multi-media technical resources to help you
- We investigate all quality concerns to ensure our products perform to the highest standards

If the product does not perform as described on this datasheet, we will offer a refund or replacement. For full details of the Abpromise, please visit <https://www.abcam.com/abpromise> or contact our technical team.

#### Terms and conditions

- Guarantee only valid for products bought direct from Abcam or one of our authorized distributors