




Product datasheet

Anti-MTHFD1L antibody ab116615

[1 References](#) [2 Images](#)

Overview

Product name	Anti-MTHFD1L antibody
Description	Goat polyclonal to MTHFD1L
Host species	Goat
Specificity	Based on homology with the immunogen sequence, we believe this antibody will also react with MTHFD1
Tested applications	Suitable for: WB, IHC-P
Species reactivity	Reacts with: Mouse, Rat, Human Predicted to work with: Cow, Dog, Pig 
Immunogen	Synthetic peptide corresponding to Human MTHFD1L aa 550-650 (internal sequence) (Cysteine residue). Database link: NP_056255.2  Run BLAST with  Run BLAST with
Positive control	WB: Recombinant Human MTHFD1 protein (ab116852), human cerebellum tissue lysate, rat and mouse brain tissue lysates and NIH3T3 cell lysate. IHC-P: Human tonsil tissue.
General notes	<p>The Life Science industry has been in the grips of a reproducibility crisis for a number of years. Abcam is leading the way in addressing this with our range of recombinant monoclonal antibodies and knockout edited cell lines for gold-standard validation. Please check that this product meets your needs before purchasing.</p> <p>If you have any questions, special requirements or concerns, please send us an inquiry and/or contact our Support team ahead of purchase. Recommended alternatives for this product can be found below, along with publications, customer reviews and Q&As</p>

Properties

Form	Liquid
Storage instructions	Shipped at 4°C. Upon delivery aliquot and store at -20°C. Avoid repeated freeze / thaw cycles.
Storage buffer	pH: 7.30 Preservative: 0.02% Sodium azide Constituents: 99% Tris buffered saline, 0.5% BSA
Purity	Immunogen affinity purified
Purification notes	ab116615 is purified from Goat serum by ammonium sulphate precipitation followed by antigen

affinity chromatography using the immunizing peptide.

Clonality

Polyclonal

Isotype

IgG

Applications

The Abpromise guarantee

Our **Abpromise guarantee** covers the use of ab116615 in the following tested applications.

The application notes include recommended starting dilutions; optimal dilutions/concentrations should be determined by the end user.

Application	Abreviews	Notes
WB		Use a concentration of 0.1 - 0.3 µg/ml. Predicted molecular weight: 106 kDa. 1 hour primary incubation is recommended for this product.
IHC-P		Use a concentration of 5 µg/ml. Perform heat mediated antigen retrieval with citrate buffer pH 6 before commencing with IHC staining protocol.

Target

Function

May provide the missing metabolic reaction required to link the mitochondria and the cytoplasm in the mammalian model of one-carbon folate metabolism in embryonic an transformed cells complementing thus the enzymatic activities of MTHFD2.

Tissue specificity

Detected in most tissues, highest expression found in placenta, thymus and brain. Low expression is found in liver and skeletal muscle. Up-regulated in colon adenocarcinoma.

Pathway

One-carbon metabolism; tetrahydrofolate interconversion.

Sequence similarities

In the N-terminal section; belongs to the tetrahydrofolate dehydrogenase/cyclohydrolase family.
In the C-terminal section; belongs to the formate--tetrahydrofolate ligase family.

Domain

This monofunctional enzyme consists of two major domains: an N-terminal inactive methylene-THF dehydrogenase and cyclohydrolase domain and an active larger formyl-THF synthetase C-terminal domain.

Cellular localization

Mitochondrion.

Images



Western blot - Anti-MTHFD1L antibody (ab116615)

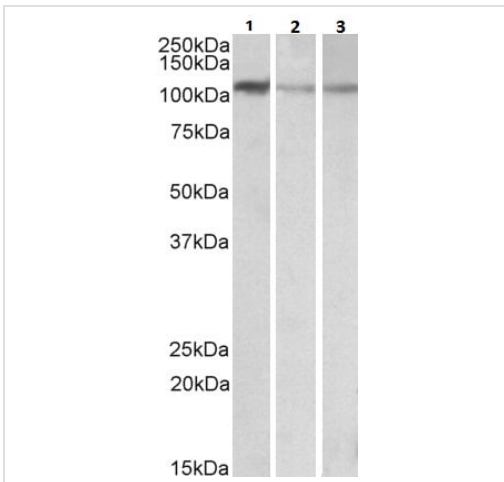
Anti-MTHFD1L antibody (ab116615) at 0.1 µg/ml + Human cerebellum tissue lysate in RIPA buffer at 35 µg

Developed using the ECL technique.

Predicted band size: 106 kDa

Observed band size: 110 kDa

Primary incubation for 1 hour.



Western blot - Anti-MTHFD1L antibody (ab116615)

All lanes : Anti-MTHFD1L antibody (ab116615) at 0.1 µg/ml

Lane 1 : NIH3T3 cell lysate in RIPA buffer

Lane 2 : Mouse brain tissue lysate in RIPA buffer

Lane 3 : Rat brain tissue lysate in RIPA buffer

Lysates/proteins at 35 µg per lane.

Predicted band size: 106 kDa

Observed band size: 110 kDa

Primary incubation for 1 hour. Detected by chemiluminescence.

Please note: All products are "FOR RESEARCH USE ONLY. NOT FOR USE IN DIAGNOSTIC PROCEDURES"

Our Abpromise to you: Quality guaranteed and expert technical support

- Replacement or refund for products not performing as stated on the datasheet
- Valid for 12 months from date of delivery
- Response to your inquiry within 24 hours
- We provide support in Chinese, English, French, German, Japanese and Spanish
- Extensive multi-media technical resources to help you
- We investigate all quality concerns to ensure our products perform to the highest standards

If the product does not perform as described on this datasheet, we will offer a refund or replacement. For full details of the Abpromise, please visit <https://www.abcam.com/abpromise> or contact our technical team.

Terms and conditions

- Guarantee only valid for products bought direct from Abcam or one of our authorized distributors