

Product datasheet

Anti-MTIF2 antibody ab121243

★★★★☆ [1 Abreviews](#) [3 Images](#)

Overview

Product name	Anti-MTIF2 antibody
Description	Rabbit polyclonal to MTIF2
Host species	Rabbit
Tested applications	Suitable for: IHC-P, ICC/IF, WB
Species reactivity	Reacts with: Human
Immunogen	Recombinant fragment corresponding to Human MTIF2 aa 497-646.
Positive control	Human cell line A431, Human plasma lysate, Human nasopharynx tissue.
General notes	<p>The Life Science industry has been in the grips of a reproducibility crisis for a number of years. Abcam is leading the way in addressing this with our range of recombinant monoclonal antibodies and knockout edited cell lines for gold-standard validation. Please check that this product meets your needs before purchasing.</p> <p>If you have any questions, special requirements or concerns, please send us an inquiry and/or contact our Support team ahead of purchase. Recommended alternatives for this product can be found below, along with publications, customer reviews and Q&As</p>

Properties

Form	Liquid
Storage instructions	Shipped at 4°C. Upon delivery aliquot and store at -20°C. Avoid freeze / thaw cycles.
Storage buffer	pH: 7.20 Preservative: 0.02% Sodium azide Constituents: 59% PBS, 40% Glycerol (glycerin, glycerine)
Purity	Immunogen affinity purified
Clonality	Polyclonal
Isotype	IgG

Applications

The Abpromise guarantee Our **Abpromise guarantee** covers the use of ab121243 in the following tested applications. The application notes include recommended starting dilutions; optimal dilutions/concentrations should be determined by the end user.

Application	Abreviews	Notes
IHC-P		1/20 - 1/50. Perform heat mediated antigen retrieval with citrate buffer pH 6 before commencing with IHC staining protocol. Use buffer at pH 6 for antigen retrieval.
ICC/IF		Use a concentration of 0.25 - 2 µg/ml.
WB	★★★★★ (1)	Use a concentration of 0.04 - 0.4 µg/ml.

Target

Function

One of the essential components for the initiation of protein synthesis. Protects formylmethionyl-tRNA from spontaneous hydrolysis and promotes its binding to the 30S ribosomal subunits. Also involved in the hydrolysis of GTP during the formation of the 70S ribosomal complex.

Tissue specificity

Expressed in all tissues examined. Highest level in skeletal muscle.

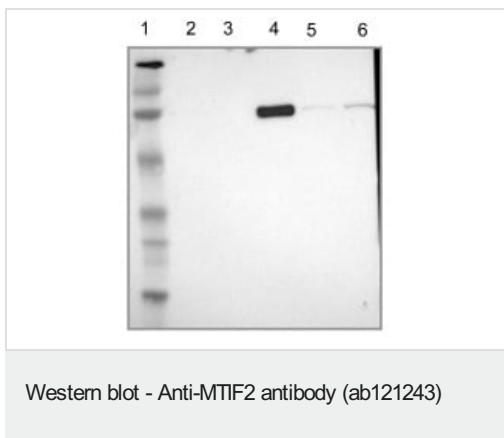
Sequence similarities

Belongs to the IF-2 family.

Cellular localization

Mitochondrion.

Images



All lanes : Anti-MTIF2 antibody (ab121243) at 1/250 dilution

Lane 1 : Marker [kDa] 220, 112, 84, 47, 32, 26, 16.8

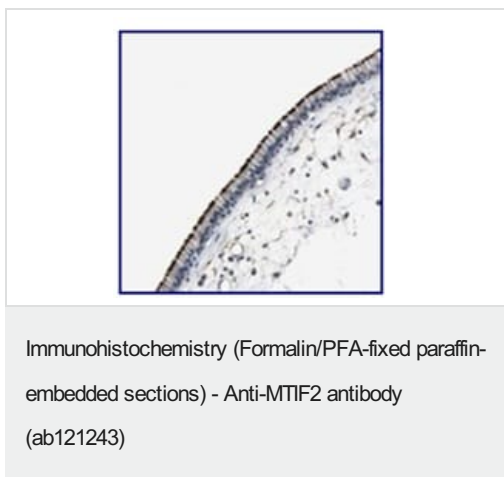
Lane 2 : RT-4 cell lysate

Lane 3 : U-251 MG cell lysate

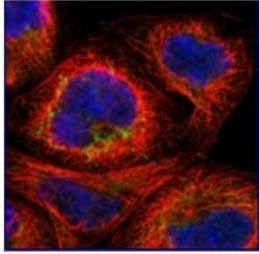
Lane 4 : Human Plasma lysate

Lane 5 : Human liver lysate

Lane 6 : Human tonsil lysate



Immunohistochemical staining of paraffin embedded Human nasopharynx tissue, using 1/25 ab121243, shows strong membranous positivity in respiratory epithelial cells.



Immunofluorescent staining, using 4 µg/ml ab121243, in Human cell line A431 shows positivity in mitochondria. Antibody staining is shown in green.

Immunocytochemistry/ Immunofluorescence - Anti-MTIF2 antibody (ab121243)

Please note: All products are "FOR RESEARCH USE ONLY. NOT FOR USE IN DIAGNOSTIC PROCEDURES"

Our Abpromise to you: Quality guaranteed and expert technical support

- Replacement or refund for products not performing as stated on the datasheet
- Valid for 12 months from date of delivery
- Response to your inquiry within 24 hours
- We provide support in Chinese, English, French, German, Japanese and Spanish
- Extensive multi-media technical resources to help you
- We investigate all quality concerns to ensure our products perform to the highest standards

If the product does not perform as described on this datasheet, we will offer a refund or replacement. For full details of the Abpromise, please visit <https://www.abcam.com/abpromise> or contact our technical team.

Terms and conditions

- Guarantee only valid for products bought direct from Abcam or one of our authorized distributors