

Anti-MTMR6 antibody ab69875

[1 References](#) [2 Images](#)

Overview

Product name	Anti-MTMR6 antibody
Description	Mouse polyclonal to MTMR6
Host species	Mouse
Tested applications	Suitable for: WB
Species reactivity	Reacts with: Human
Immunogen	Recombinant full length protein within Human MTMR6. The exact immunogen sequence used to generate this antibody is proprietary information. If additional detail on the immunogen is needed to determine the suitability of the antibody for your needs, please contact our Scientific Support team to discuss your requirements.
Positive control	MTMR6 transfected 293T cell lysate and human kidney tissue lysate.
General notes	<p>The Life Science industry has been in the grips of a reproducibility crisis for a number of years. Abcam is leading the way in addressing this with our range of recombinant monoclonal antibodies and knockout edited cell lines for gold-standard validation. Please check that this product meets your needs before purchasing.</p> <p>If you have any questions, special requirements or concerns, please send us an inquiry and/or contact our Support team ahead of purchase. Recommended alternatives for this product can be found below, along with publications, customer reviews and Q&As</p>

Properties

Form	Liquid
Storage instructions	Shipped at 4°C. Upon delivery aliquot and store at -20°C or -80°C. Avoid repeated freeze / thaw cycles.
Storage buffer	pH: 7.40 Constituent: 100% PBS
Purity	Protein G purified
Clonality	Polyclonal
Isotype	IgG

Applications

The Abpromise guarantee

Our **Abpromise guarantee** covers the use of ab69875 in the following tested applications.

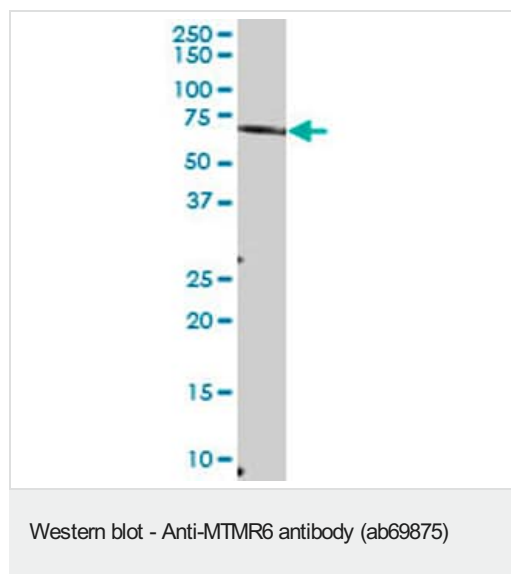
The application notes include recommended starting dilutions; optimal dilutions/concentrations should be determined by the end user.

Application	Abreviews	Notes
WB		1/500 - 1/1000. Detects a band of approximately 72 kDa (predicted molecular weight: 72 kDa).

Target

Function	Phosphatase that acts on lipids with a phosphoinositol headgroup. Acts as a negative regulator of KCNN4/KCa3.1 channel activity in CD4+ T-cells possibly by decreasing intracellular levels of phosphatidylinositol-3 phosphatase. Negatively regulates proliferation of reactivated CD4+ T-cells.
Tissue specificity	Expressed in CD4+ T-cells.
Sequence similarities	Belongs to the protein-tyrosine phosphatase family. Non-receptor class myotubularin subfamily. Contains 1 myotubularin phosphatase domain.
Cellular localization	Nucleus envelope.

Images



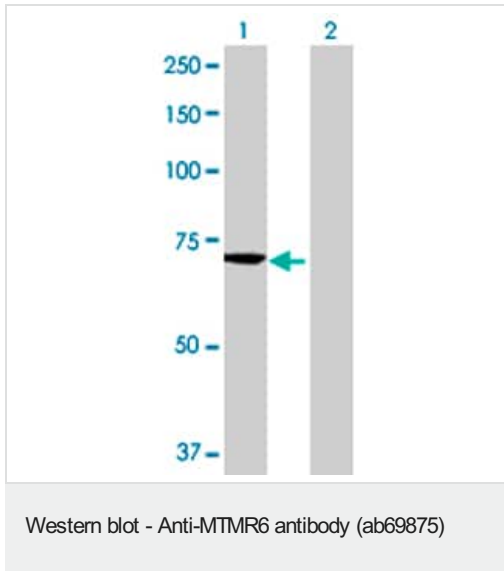
Anti-MTMR6 antibody (ab69875) at 1/500 dilution + human kidney tissue lysate at 50 µg

Secondary

Goat Anti-Mouse IgG (H&L)-HRP Conjugate at 1/2500 dilution

Predicted band size: 72 kDa

Observed band size: 72 kDa



All lanes : Anti-MTMR6 antibody (ab69875) at 1/500 dilution

Lane 1 : MTMR6 transfected 293T cell lysate

Lane 2 : Non-transfected 293T cell lysate

Lysates/proteins at 25 µg per lane.

Secondary

All lanes : Goat Anti-Mouse IgG (H&L)-HRP Conjugate at 1/2500 dilution

Predicted band size: 72 kDa

Observed band size: 72 kDa

Please note: All products are "FOR RESEARCH USE ONLY. NOT FOR USE IN DIAGNOSTIC PROCEDURES"

Our Abpromise to you: Quality guaranteed and expert technical support

- Replacement or refund for products not performing as stated on the datasheet
- Valid for 12 months from date of delivery
- Response to your inquiry within 24 hours
- We provide support in Chinese, English, French, German, Japanese and Spanish
- Extensive multi-media technical resources to help you
- We investigate all quality concerns to ensure our products perform to the highest standards

If the product does not perform as described on this datasheet, we will offer a refund or replacement. For full details of the Abpromise, please visit <https://www.abcam.com/abpromise> or contact our technical team.

Terms and conditions

- Guarantee only valid for products bought direct from Abcam or one of our authorized distributors