




## Product datasheet

# Anti-MTX1/MTX antibody ab233205

[1 References](#) [6 Images](#)

### Overview

<b>Product name</b>	Anti-MTX1/MTX antibody
<b>Description</b>	Rabbit polyclonal to MTX1/MTX
<b>Host species</b>	Rabbit
<b>Tested applications</b>	<b>Suitable for:</b> WB, IHC-P
<b>Species reactivity</b>	<b>Reacts with:</b> Rat, Human <b>Predicted to work with:</b> Mouse, Cow, Pig, Cynomolgus monkey 
<b>Immunogen</b>	Recombinant fragment (His-T7-tag) corresponding to Human MTX1/MTX aa 150-400. Expressed in E.coli. Database link: <a href="#">Q13505</a> <div>  <a href="#">Run BLAST with</a>  <a href="#">Run BLAST with</a> </div>
<b>Positive control</b>	WB: Recombinant human MTX1/MTX protein; Jurkat and MCF7 cell lysates; Rat cerebrum lysate. IHC-P: Human stomach and kidney tissue.
<b>General notes</b>	<p>The Life Science industry has been in the grips of a reproducibility crisis for a number of years. Abcam is leading the way in addressing this with our range of recombinant monoclonal antibodies and knockout edited cell lines for gold-standard validation. Please check that this product meets your needs before purchasing.</p> <p>If you have any questions, special requirements or concerns, please send us an inquiry and/or contact our Support team ahead of purchase. Recommended alternatives for this product can be found below, along with publications, customer reviews and Q&amp;As</p>

### Properties

<b>Form</b>	Liquid
<b>Storage instructions</b>	Shipped at 4°C. Store at +4°C short term (1-2 weeks). Upon delivery aliquot. Store at -20°C long term. Avoid freeze / thaw cycle.
<b>Storage buffer</b>	pH: 7.40 Preservative: 0.011% Proclin 300 Constituents: 55.77% Glycerol (glycerin, glycerine), 44.219% PBS
<b>Purity</b>	Immunogen affinity purified
<b>Purification notes</b>	Antigen-specific affinity chromatography followed by Protein A affinity chromatography.
<b>Clonality</b>	Polyclonal

## Applications

### The Abpromise guarantee

Our **Abpromise guarantee** covers the use of ab233205 in the following tested applications.

The application notes include recommended starting dilutions; optimal dilutions/concentrations should be determined by the end user.

Application	Abreviews	Notes
WB		Use a concentration of 0.2 - 2 µg/ml. Predicted molecular weight: 51 kDa.
IHC-P		Use a concentration of 5 - 20 µg/ml.

## Target

### Function

Involved in transport of proteins into the mitochondrion. Essential for embryonic development.

### Sequence similarities

Belongs to the metaxin family.

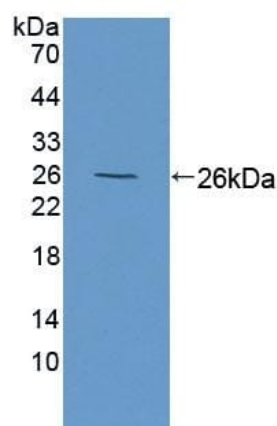
### Post-translational modifications

Ubiquitinated by PARK2 during mitophagy, leading to its degradation and enhancement of mitophagy. Deubiquitinated by USP30.

### Cellular localization

Membrane. Mitochondrion outer membrane.

## Images



Western blot - Anti-MTX1/MTX antibody (ab233205)

Anti-MTX1/MTX antibody (ab233205) at 2 µg/ml + Recombinant human MTX1/MTX protein

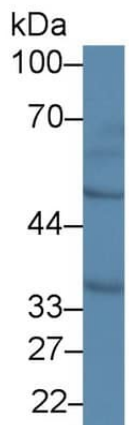
**Predicted band size:** 51 kDa



Western blot - Anti-MTX1/MTX antibody (ab233205)

Anti-MTX1/MTX antibody (ab233205) at 2 µg/ml + Jurkat (human T cell leukemia cell line from peripheral blood) cell lysate

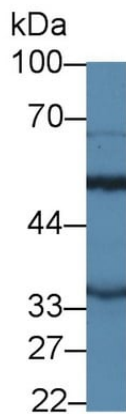
**Predicted band size:** 51 kDa



Western blot - Anti-MTX1/MTX antibody (ab233205)

Anti-MTX1/MTX antibody (ab233205) at 2 µg + Rat cerebrum lysate

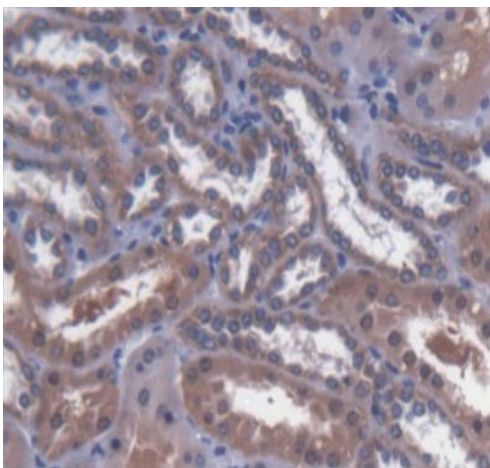
**Predicted band size:** 51 kDa



Western blot - Anti-MTX1/MTX antibody (ab233205)

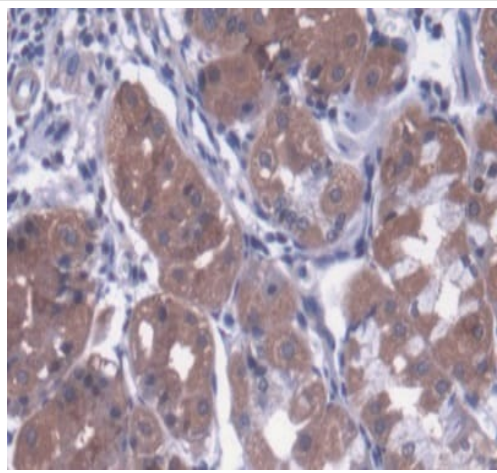
Anti-MTX1/MTX antibody (ab233205) at 2 µg/ml + MCF7 (human breast adenocarcinoma cell line) cell lysate

**Predicted band size:** 51 kDa



Immunohistochemistry (Formalin/PFA-fixed paraffin-embedded sections) - Anti-MTX1/MTX antibody (ab233205)

Formalin-fixed, paraffin-embedded human kidney tissue stained for MTX1/MTX using ab233205 at 20 µg/ml in immunohistochemical analysis. DAB staining.



Immunohistochemistry (Formalin/PFA-fixed paraffin-embedded sections) - Anti-MTX1/MTX antibody (ab233205)

Formalin-fixed, paraffin-embedded human stomach tissue stained for MTX1/MTX using ab233205 at 20 µg/ml in immunohistochemical analysis. DAB staining.

**Please note:** All products are "FOR RESEARCH USE ONLY. NOT FOR USE IN DIAGNOSTIC PROCEDURES"

### Our Abpromise to you: Quality guaranteed and expert technical support

---

- Replacement or refund for products not performing as stated on the datasheet
- Valid for 12 months from date of delivery
- Response to your inquiry within 24 hours
- We provide support in Chinese, English, French, German, Japanese and Spanish
- Extensive multi-media technical resources to help you
- We investigate all quality concerns to ensure our products perform to the highest standards

If the product does not perform as described on this datasheet, we will offer a refund or replacement. For full details of the Abpromise, please visit <https://www.abcam.com/abpromise> or contact our technical team.

### Terms and conditions

---

- Guarantee only valid for products bought direct from Abcam or one of our authorized distributors