




Anti-Muc19 antibody ab121014

[4 References](#) [1 Image](#)

Overview

Product name	Anti-Muc19 antibody
Description	Goat polyclonal to Muc19
Host species	Goat
Tested applications	Suitable for: ICC/IF
Species reactivity	Reacts with: Mouse Predicted to work with: Rat 
Immunogen	Synthetic peptide: ECKRSVKYNYETFQ , corresponding to C terminal amino acids 7461-7474 of Mouse Muc19 (NP_997126.2).  Run BLAST with  Run BLAST with
Positive control	ICC/IF: Mouse sublingual salivary gland cells.
General notes	<p>The Life Science industry has been in the grips of a reproducibility crisis for a number of years. Abcam is leading the way in addressing this with our range of recombinant monoclonal antibodies and knockout edited cell lines for gold-standard validation. Please check that this product meets your needs before purchasing.</p> <p>If you have any questions, special requirements or concerns, please send us an inquiry and/or contact our Support team ahead of purchase. Recommended alternatives for this product can be found below, along with publications, customer reviews and Q&As</p>

Properties

Form	Liquid
Storage instructions	Shipped at 4°C. Upon delivery aliquot and store at -20°C. Avoid repeated freeze / thaw cycles.
Storage buffer	pH: 7.30 Preservative: 0.02% Sodium azide Constituents: 99% Tris buffered saline, 0.5% BSA
Purity	Immunogen affinity purified
Purification notes	Purified from goat serum by ammonium sulphate precipitation followed by antigen affinity chromatography using the immunizing peptide.
Clonality	Polyclonal

Isotype IgG

Applications

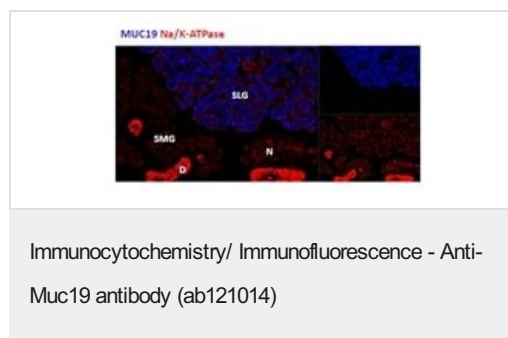
The Abpromise guarantee Our **Abpromise guarantee** covers the use of ab121014 in the following tested applications. The application notes include recommended starting dilutions; optimal dilutions/concentrations should be determined by the end user.

Application	Abreviews	Notes
ICC/IF		Use a concentration of 1.8 µg/ml.

Target

Function	May function in ocular mucus homeostasis.
Tissue specificity	Specifically expressed in sublingual salivary glands. Expressed by mucous cells of the submandibular gland and submucosal gland of the trachea. Expression is altered in sld (sublingual gland differentiation arrest) mutants.
Sequence similarities	Contains 1 CTCK (C-terminal cystine knot-like) domain. Contains 1 TIL (trypsin inhibitory-like) domain. Contains 2 VWFC domains. Contains 3 VWFD domains.
Cellular localization	Secreted.

Images



ab121014 (1.8ug/ml) staining cells of the sublingual salivary gland (SLG) in mouse, but not any cells of the submandibular salivary gland (SMG).

Please note: All products are "FOR RESEARCH USE ONLY. NOT FOR USE IN DIAGNOSTIC PROCEDURES"

Our Abpromise to you: Quality guaranteed and expert technical support

- Replacement or refund for products not performing as stated on the datasheet
- Valid for 12 months from date of delivery
- Response to your inquiry within 24 hours
- We provide support in Chinese, English, French, German, Japanese and Spanish
- Extensive multi-media technical resources to help you

- We investigate all quality concerns to ensure our products perform to the highest standards

If the product does not perform as described on this datasheet, we will offer a refund or replacement. For full details of the Abpromise, please visit <https://www.abcam.com/abpromise> or contact our technical team.

Terms and conditions

- Guarantee only valid for products bought direct from Abcam or one of our authorized distributors