


Product datasheet

Anti-Muscarinic Acetylcholine Receptor 2/CM2 antibody [EPR4568] ab109226

Recombinant RabMAb

★★★★★ [1 Abreviews](#) [10 References](#) [3 Images](#)

Overview

Product name	Anti-Muscarinic Acetylcholine Receptor 2/CM2 antibody [EPR4568]
Description	Rabbit monoclonal [EPR4568] to Muscarinic Acetylcholine Receptor 2/CM2
Host species	Rabbit
Specificity	Please note: blast analysis of the immunogen sequence for ab109226 shows 64% homology with the Muscarinic Acetylcholine Receptor 3, therefore some reactivity with this receptor subtype may be possible.
Tested applications	Suitable for: WB, IHC-P Unsuitable for: Flow Cyt
Species reactivity	Reacts with: Mouse, Human Predicted to work with: Rat 
Immunogen	Synthetic peptide. This information is proprietary to Abcam and/or its suppliers.
Positive control	WB: SH-SY5Y, fetal brain, U87-MG, Neuro-2a, and Y79 lysates IHC-P: Human brain tissue IF: SH-SY5Y cells
General notes	<p>This product is a recombinant monoclonal antibody, which offers several advantages including:</p> <ul style="list-style-type: none"> - High batch-to-batch consistency and reproducibility - Improved sensitivity and specificity - Long-term security of supply - Animal-free production <p>For more information see here.</p> <p>Our RabMAb[®] technology is a patented hybridoma-based technology for making rabbit monoclonal antibodies. For details on our patents, please refer to RabMAb[®] patents.</p>

Properties

Form	Liquid
Storage instructions	Frozen Stock (-20C). Shelf life 12 months.
Storage buffer	pH: 7.20 Preservative: 0.05% Sodium azide

	Constituents: 0.1% BSA, 40% Glycerol (glycerin, glycerine), 9.85% Tris glycine, 50% Tissue culture supernatant
Purity	Protein A purified
Clonality	Monoclonal
Clone number	EPR4568
Isotype	IgG

Applications

The Abpromise guarantee Our **Abpromise guarantee** covers the use of ab109226 in the following tested applications. The application notes include recommended starting dilutions; optimal dilutions/concentrations should be determined by the end user.

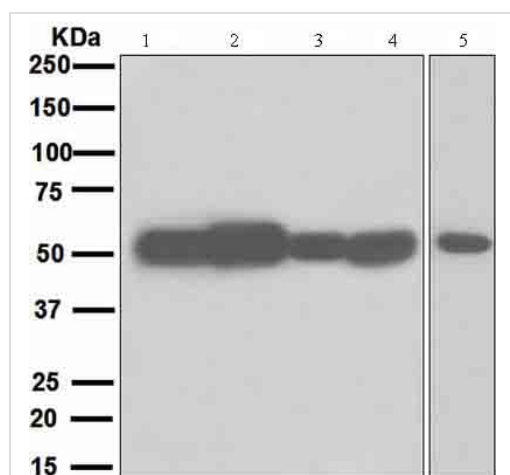
Application	Abreviews	Notes
WB		1/1000 - 1/10000. Detects a band of approximately 52 kDa (predicted molecular weight: 52 kDa).
IHC-P	★★★★★ (1)	1/100 - 1/250. Perform heat mediated antigen retrieval with citrate buffer pH 6 before commencing with IHC staining protocol.

Application notes Is unsuitable for Flow Cyt.

Target

Function	The muscarinic acetylcholine receptor mediates various cellular responses, including inhibition of adenylate cyclase, breakdown of phosphoinositides and modulation of potassium channels through the action of G proteins. Primary transducing effect is adenylate cyclase inhibition.
Involvement in disease	Genetic variations in CHRM2 can influence susceptibility to major depressive disorder (MDD) [MIM:608516]. MDD is one of the most common psychiatric disorders. MDD is a complex trait characterized by one or more major depressive episodes without a history of manic, mixed, or hypomanic episodes. A major depressive episode is characterized by at least 2 weeks during which there is a new onset or clear worsening of either depressed mood or loss of interest or pleasure in nearly all activities. Four additional symptoms must also be present including changes in appetite, weight, sleep, and psychomotor activity; decreased energy; feelings of worthlessness or guilt; difficulty thinking, concentrating, or making decisions; or recurrent thoughts of death or suicidal ideation, plans, or attempts. The episode must be accompanied by distress or impairment in social, occupational, or other important areas of functioning.
Sequence similarities	Belongs to the G-protein coupled receptor 1 family. Muscarinic acetylcholine receptor subfamily. CHRM2 sub-subfamily.
Cellular localization	Cell membrane. Cell junction > synapse > postsynaptic cell membrane.

Images



Western blot - Anti-Muscarinic Acetylcholine Receptor 2/CM2 antibody [EPR4568] (ab109226)

All lanes : Anti-Muscarinic Acetylcholine Receptor 2/CM2 antibody [EPR4568] (ab109226) at 1/1000 dilution

Lane 1 : SH-SY5Y cell lysate

Lane 2 : Fetal brain tissue lysate

Lane 3 : U-87 MG (Human glioblastoma-astrocytoma epithelial cell line) cell lysate

Lane 4 : Neuro-2a lysate

Lane 5 : Y79 (Human retinoblastoma cell line) cell lysate

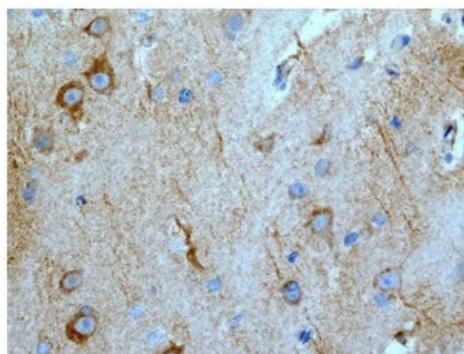
Lysates/proteins at 10 µg per lane.

Secondary

All lanes : Standard HRP labelled goat anti-rabbit at 1/2000 dilution

Predicted band size: 52 kDa

Observed band size: 52 kDa



Immunohistochemistry (Formalin/PFA-fixed paraffin-embedded sections) - Anti-Muscarinic Acetylcholine Receptor 2/CM2 antibody [EPR4568] (ab109226)

Immunohistochemical analysis of paraffin-embedded Human brain tissue using ab109226 at 1/100.

Perform heat mediated antigen retrieval with citrate buffer pH 6 before commencing with IHC staining protocol.

Why choose a recombinant antibody?



Research with confidence
Consistent and reproducible results



Long-term and scalable supply
Recombinant technology



Success from the first experiment
Confirmed specificity



Ethical standards compliant
Animal-free production

Anti-Muscarinic Acetylcholine Receptor 2/CM2
antibody [EPR4568] (ab109226)

Please note: All products are "FOR RESEARCH USE ONLY. NOT FOR USE IN DIAGNOSTIC PROCEDURES"

Our Abpromise to you: Quality guaranteed and expert technical support

- Replacement or refund for products not performing as stated on the datasheet
- Valid for 12 months from date of delivery
- Response to your inquiry within 24 hours
- We provide support in Chinese, English, French, German, Japanese and Spanish
- Extensive multi-media technical resources to help you
- We investigate all quality concerns to ensure our products perform to the highest standards

If the product does not perform as described on this datasheet, we will offer a refund or replacement. For full details of the Abpromise, please visit <https://www.abcam.com/abpromise> or contact our technical team.

Terms and conditions

- Guarantee only valid for products bought direct from Abcam or one of our authorized distributors