


Product datasheet

Anti-MX1 antibody ab95926

★★★★★ [10 Abreviews](#) [39 References](#) [3 Images](#)

Overview

Product name	Anti-MX1 antibody
Description	Rabbit polyclonal to MX1
Host species	Rabbit
Tested applications	Suitable for: WB, IHC-P
Species reactivity	Reacts with: Human Predicted to work with: Dog 
Immunogen	Recombinant protein fragment corresponding to a region within amino acids 1 and 246 of Human MX1.
Positive control	WB: H1299, HeLa, and Raji whole cell lysate; 293T, A431 and HepG2 whole cell lysate (ab7900) IHC-P: MDA-MB-468 xenograft
General notes	<p>The Life Science industry has been in the grips of a reproducibility crisis for a number of years. Abcam is leading the way in addressing this with our range of recombinant monoclonal antibodies and knockout edited cell lines for gold-standard validation. Please check that this product meets your needs before purchasing.</p> <p>If you have any questions, special requirements or concerns, please send us an inquiry and/or contact our Support team ahead of purchase. Recommended alternatives for this product can be found below, along with publications, customer reviews and Q&As</p>

Properties

Form	Liquid
Storage instructions	Shipped at 4°C. Upon delivery aliquot and store at -20°C or -80°C. Avoid repeated freeze / thaw cycles.
Storage buffer	pH: 7.00 Preservative: 0.025% Proclin 300 Constituents: 78% PBS, 1% BSA, 20% Glycerol (glycerin, glycerine)
Purity	Immunogen affinity purified
Purification notes	Purified by antigen affinity chromatography.
Clonality	Polyclonal
Isotype	IgG

Applications

The Abpromise guarantee

Our **Abpromise guarantee** covers the use of ab95926 in the following tested applications.

The application notes include recommended starting dilutions; optimal dilutions/concentrations should be determined by the end user.

Application	Abreviews	Notes
WB	★★★★★ (2)	1/500 - 1/3000. Predicted molecular weight: 76 kDa.
IHC-P	★★★★★ (6)	1/100 - 1/500.

Target

Function

May regulate the calcium channel activity of TRPCs. Shows activity against influenza virus and VSV, a rhabdovirus.

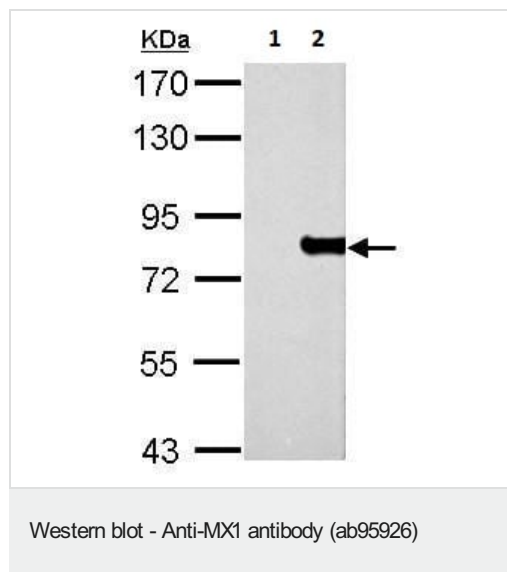
Sequence similarities

Belongs to the dynamin family.
Contains 1 GED domain.

Cellular localization

Cytoplasm.

Images



Lane 1 : Anti-MX1 antibody (ab95926) at 1/1000 dilution

Lane 2 : Anti-MX1 antibody (ab95926)

Lane 1 : 293T whole cell lysate/extract

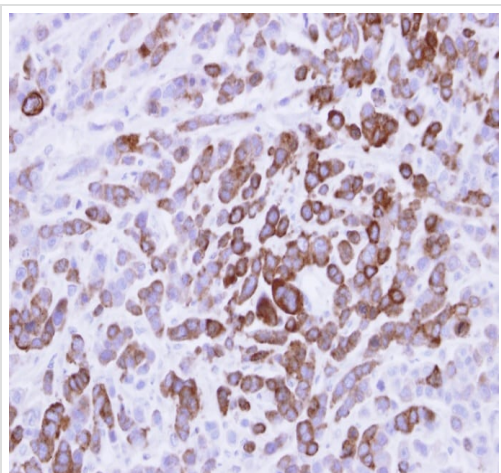
Lane 2 : Human MX-1 transfected 293T cells

Lysates/proteins at 30 µg per lane.

Secondary

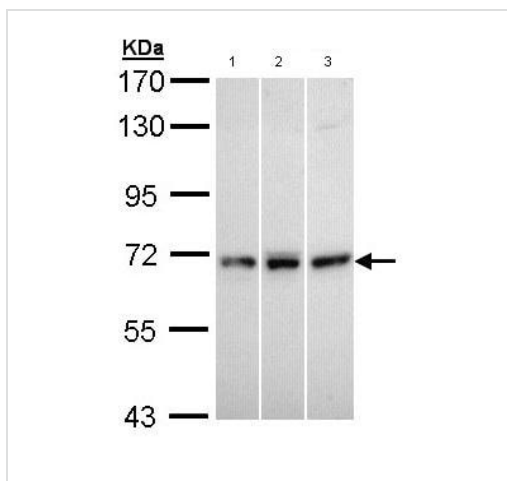
All lanes : HRP-conjugated anti-rabbit IgG antibody

Predicted band size: 76 kDa



Immunohistochemistry (Formalin/PFA-fixed paraffin-embedded sections) - Anti-MX1 antibody (ab95926)

Immunohistochemical analysis of paraffin embedded MDA-MB-468 xenograft, using ab95926 at a 1/500 dilution.



Western blot - Anti-MX1 antibody (ab95926)

All lanes : Anti-MX1 antibody (ab95926) at 1/5000 dilution

Lane 1 : H1299 cell lysate

Lane 2 : HeLa cell lysate

Lane 3 : Raji cell lysate

Lysates/proteins at 30 µg per lane.

Predicted band size: 76 kDa

Please note: All products are "FOR RESEARCH USE ONLY. NOT FOR USE IN DIAGNOSTIC PROCEDURES"

Our Abpromise to you: Quality guaranteed and expert technical support

- Replacement or refund for products not performing as stated on the datasheet
- Valid for 12 months from date of delivery
- Response to your inquiry within 24 hours

- We provide support in Chinese, English, French, German, Japanese and Spanish
- Extensive multi-media technical resources to help you
- We investigate all quality concerns to ensure our products perform to the highest standards

If the product does not perform as described on this datasheet, we will offer a refund or replacement. For full details of the Abpromise, please visit <https://www.abcam.com/abpromise> or contact our technical team.

Terms and conditions

- Guarantee only valid for products bought direct from Abcam or one of our authorized distributors