

# Anti-Myc tag antibody ab152146

[9 References](#) [3 Images](#)

## Overview

|                            |   |
|----------------------------|---|
| <b>Product name</b>        | Anti-Myc tag antibody   |
| <b>Description</b>         | Rabbit polyclonal to Myc tag  |
| <b>Host species</b>        | Rabbit  |
| <b>Tested applications</b> | <b>Suitable for:</b> WB, IP, ICC/IF   |
| <b>Species reactivity</b>  | <b>Reacts with:</b> Human   |
| <b>Immunogen</b>           | Synthetic peptide within Human Myc tag aa 400 to the C-terminus. The exact immunogen sequence used to generate this antibody is proprietary information. If additional detail on the immunogen is needed to determine the suitability of the antibody for your needs, please <a href="#">contact</a> our Scientific Support team to discuss your requirements.  |
| <b>Positive control</b>    | 293T cells transfected with Myc tag recombinant protein lysate; HeLa Myc tag transfected lysates.   |
| <b>General notes</b>       | <p>The Life Science industry has been in the grips of a reproducibility crisis for a number of years. Abcam is leading the way in addressing this with our range of recombinant monoclonal antibodies and knockout edited cell lines for gold-standard validation. Please check that this product meets your needs before purchasing.</p> <p>If you have any questions, special requirements or concerns, please send us an inquiry and/or contact our Support team ahead of purchase. Recommended alternatives for this product can be found below, along with publications, customer reviews and Q&amp;As</p> |

## Properties

|                             |  |
|-----------------------------|--|
| <b>Form</b>                 | Liquid   |
| <b>Storage instructions</b> | Shipped at 4°C. Upon delivery aliquot. Store at -20°C or -80°C. Avoid freeze / thaw cycle.                               |
| <b>Storage buffer</b>       | pH: 7.00<br>Preservative: 0.01% Thimerosal (merthiolate)<br>Constituents: 79.99% PBS, 20% Glycerol (glycerin, glycerine) |
| <b>Purity</b>               | Immunogen affinity purified  |
| <b>Clonality</b>            | Polyclonal   |
| <b>Isotype</b>              | IgG  |

## Applications

## The Abpromise guarantee

Our **Abpromise guarantee** covers the use of ab152146 in the following tested applications.

The application notes include recommended starting dilutions; optimal dilutions/concentrations should be determined by the end user.

| Application | Abreviews | Notes             |
|-------------|-----------|-------------------|
| WB          |           | 1/5000 - 1/20000. |
| IP          |           | 1/10000.          |
| ICC/IF      |           | 1/100 - 1/1000.   |

## Target

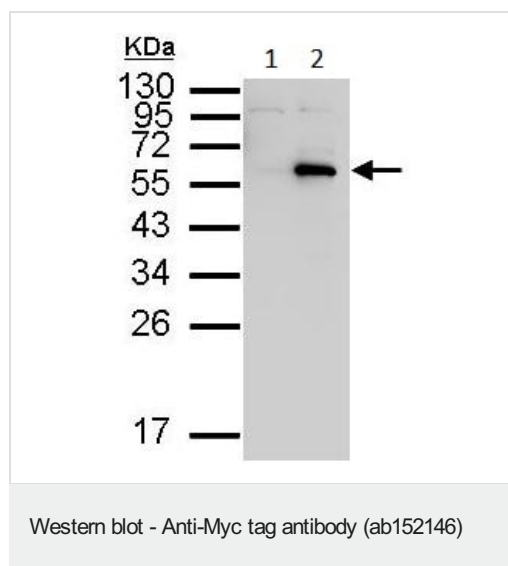
### Relevance

Epitope tags are short peptide sequences that are easily recognized by tag-specific antibodies. Due to their small size, epitope tags do not affect the tagged protein's biochemical properties. Most often sequences encoding the epitope tag are included with target DNA at the time of cloning to produce fusion proteins containing the epitope tag sequence. This allows anti-epitope tag antibodies to serve as universal detection reagents for any tag containing protein produced by recombinant means. This means that anti-epitope tag antibodies are a useful alternative to generating specific antibodies to identify, immunoprecipitate or immunoaffinity purify a recombinant protein. The anti-epitope tag antibody is usually functional in a variety of antibody-dependent experimental procedures. Expression vectors producing epitope tag fusion proteins are available for a variety of host expression systems including bacteria, yeast, insect and mammalian cells.

### Cellular localization

Nuclear

## Images

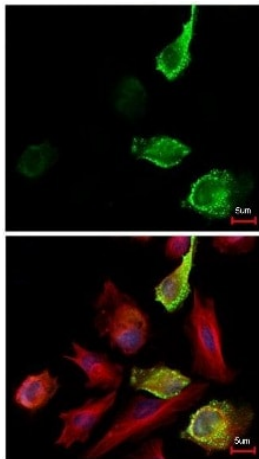


**All lanes :** Anti-Myc tag antibody (ab152146) at 1/5000 dilution

**Lane 1 :** Non-transfected 293T cell lysate

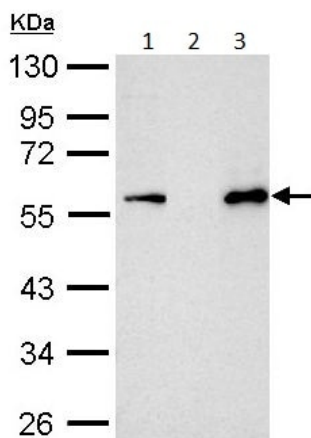
**Lane 2 :** Transfected 293T cell lysate

Lysates/proteins at 10 µg per lane.



Immunofluorescence analysis of paraformaldehyde fixed HeLa Myc tag transfected cells, labeling Myc tag using ab152146 at 1/2500 dilution (green) and alpha tubulin filaments (red).

Immunocytochemistry/ Immunofluorescence - Anti-Myc tag antibody (ab152146)



Myc antibody Immunoprecipitation of Myc-tagged protein. HeLa transfected lysates were subjected to immunoprecipitation using:  
 1: Input, 15ug of HeLa transfected lysates.  
 2: normal rabbit IgG or  
 3: 2.5 ug of ab152146.  
 The precipitated protein was detected by ab152146 diluted at 1/10000.

Immunoprecipitation - Anti-Myc tag antibody (ab152146)

**Please note:** All products are "FOR RESEARCH USE ONLY. NOT FOR USE IN DIAGNOSTIC PROCEDURES"

### Our Abpromise to you: Quality guaranteed and expert technical support

- Replacement or refund for products not performing as stated on the datasheet
- Valid for 12 months from date of delivery
- Response to your inquiry within 24 hours
- We provide support in Chinese, English, French, German, Japanese and Spanish
- Extensive multi-media technical resources to help you
- We investigate all quality concerns to ensure our products perform to the highest standards

If the product does not perform as described on this datasheet, we will offer a refund or replacement. For full details of the Abpromise, please visit <https://www.abcam.com/abpromise> or contact our technical team.

#### **Terms and conditions**

---

- Guarantee only valid for products bought direct from Abcam or one of our authorized distributors