

## Product datasheet

# Anti-Myosin light chain 3 antibody [EPR4161] ab108516

Recombinant RabMAb

2 Images

### Overview

<b>Product name</b>	Anti-Myosin light chain 3 antibody [EPR4161]
<b>Description</b>	Rabbit monoclonal [EPR4161] to Myosin light chain 3
<b>Host species</b>	Rabbit
<b>Tested applications</b>	<b>Suitable for:</b> WB <b>Unsuitable for:</b> Flow Cyt, ICC/IF, IHC-P or IP
<b>Species reactivity</b>	<b>Reacts with:</b> Mouse, Rat, Human
<b>Immunogen</b>	Synthetic peptide. This information is proprietary to Abcam and/or its suppliers.
<b>Positive control</b>	Human skeletal muscle, Human heart, Mouse heart, Mouse liver, and Rat heart lysates
<b>General notes</b>	This product is a recombinant monoclonal antibody, which offers several advantages including: <ul style="list-style-type: none"> <li>- High batch-to-batch consistency and reproducibility</li> <li>- Improved sensitivity and specificity</li> <li>- Long-term security of supply</li> <li>- Animal-free production</li> </ul> For more information <a href="#">see here</a> . Our RabMAb <sup>®</sup> technology is a patented hybridoma-based technology for making rabbit monoclonal antibodies. For details on our patents, please refer to <a href="#">RabMAb<sup>®</sup> patents</a> .

### Properties

<b>Form</b>	Liquid
<b>Storage instructions</b>	Shipped at 4°C. Store at -20°C. Stable for 12 months at -20°C.
<b>Storage buffer</b>	pH: 7.2 Preservative: 0.05% Sodium azide Constituents: 0.1% BSA, 40% Glycerol (glycerin, glycerine), 9.85% Tris glycine, 50% Tissue culture supernatant
<b>Purity</b>	Protein A purified
<b>Clonality</b>	Monoclonal
<b>Clone number</b>	EPR4161
<b>Isotype</b>	IgG

## Applications

### The Abpromise guarantee

Our **Abpromise guarantee** covers the use of ab108516 in the following tested applications.

The application notes include recommended starting dilutions; optimal dilutions/concentrations should be determined by the end user.

Application	Abreviews	Notes
WB		1/1000 - 1/10000. Predicted molecular weight: 22 kDa.

### Application notes

Is unsuitable for Flow Cyt, ICC/IF, IHC-P or IP.

## Target

### Function

Regulatory light chain of myosin. Does not bind calcium.

### Involvement in disease

Defects in MYL3 are the cause of cardiomyopathy familial hypertrophic type 8 (CMH8) [MIM:608751]. Familial hypertrophic cardiomyopathy is a hereditary heart disorder characterized by ventricular hypertrophy, which is usually asymmetric and often involves the interventricular septum. The symptoms include dyspnea, syncope, collapse, palpitations, and chest pain. They can be readily provoked by exercise. The disorder has inter- and intrafamilial variability ranging from benign to malignant forms with high risk of cardiac failure and sudden cardiac death. CMH8 inheritance can be autosomal dominant or recessive.

Defects in MYL3 are the cause of cardiomyopathy familial hypertrophic with mid-left ventricular chamber type 1 (MVC1) [MIM:608751]. MVC1 is a very rare variant of familial hypertrophic cardiomyopathy, characterized by mid-left ventricular chamber thickening.

### Sequence similarities

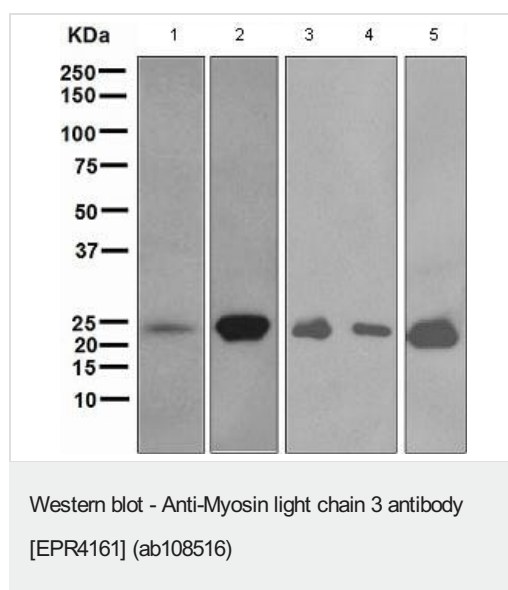
Contains 3 EF-hand domains.

### Post-translational modifications

The N-terminus is blocked.

N-terminus is methylated by METTL11A/NTM1.

## Images



**All lanes :** Anti-Myosin light chain 3 antibody [EPR4161]  
(ab108516) at 1/1000 dilution

**Lane 1 :** Human skeletal muscle lysate

**Lane 2 :** Human heart lysate

**Lane 3 :** Mouse heart lysate

**Lane 4 :** Mouse liver lysate

**Lane 5 :** Rat heart lysate

Lysates/proteins at 10 µg per lane.

**Predicted band size:** 22 kDa

### Why choose a recombinant antibody?



**Research with confidence**  
Consistent and reproducible results



**Long-term and scalable supply**  
Recombinant technology



**Success from the first experiment**  
Confirmed specificity



**Ethical standards compliant**  
Animal-free production

Anti-Myosin light chain 3 antibody [EPR4161]  
(ab108516)

**Please note:** All products are "FOR RESEARCH USE ONLY. NOT FOR USE IN DIAGNOSTIC PROCEDURES"

### Our Abpromise to you: Quality guaranteed and expert technical support

---

- Replacement or refund for products not performing as stated on the datasheet
- Valid for 12 months from date of delivery
- Response to your inquiry within 24 hours
- We provide support in Chinese, English, French, German, Japanese and Spanish
- Extensive multi-media technical resources to help you
- We investigate all quality concerns to ensure our products perform to the highest standards

If the product does not perform as described on this datasheet, we will offer a refund or replacement. For full details of the Abpromise, please visit <https://www.abcam.com/abpromise> or contact our technical team.

### Terms and conditions

---

- Guarantee only valid for products bought direct from Abcam or one of our authorized distributors