


Product datasheet

Anti-N Cadherin (phospho Y820) antibody ab76059

★★★★☆ [2 Abreviews](#) [3 References](#) [1 Image](#)

Overview

Product name	Anti-N Cadherin (phospho Y820) antibody
Description	Rabbit polyclonal to N Cadherin (phospho Y820)
Host species	Rabbit
Specificity	ab76059 detects a 130 kDa band corresponding to N cadherin in western blots of serum-starved human endothelial cells treated with pervanadate, but it is not detected in untreated cells.
Tested applications	Suitable for: WB
Species reactivity	Reacts with: Human Predicted to work with: Mouse, Rat 
Immunogen	Synthetic peptide corresponding to Human N Cadherin (phospho Y820).
Positive control	Human endothelial cells treated with pervanadate (1 mM) for 30 min.
General notes	<p>Do not aliquot this antibody.</p> <p>The Life Science industry has been in the grips of a reproducibility crisis for a number of years. Abcam is leading the way in addressing this with our range of recombinant monoclonal antibodies and knockout edited cell lines for gold-standard validation. Please check that this product meets your needs before purchasing.</p> <p>If you have any questions, special requirements or concerns, please send us an inquiry and/or contact our Support team ahead of purchase. Recommended alternatives for this product can be found below, along with publications, customer reviews and Q&As</p>

Properties

Form	Liquid
Storage instructions	Shipped at 4°C. Store at -20°C. Stable for 12 months at -20°C.
Storage buffer	Preservative: 0.05% Sodium azide Constituents: 0.1% BSA, 50% Glycerol, PBS
Purity	Immunogen affinity purified
Purification notes	ab76059 was cross-adsorbed to phospho-N Cadherin (Tyr-860) and unphosphorylated N cadherin (Tyr-820) peptides before affinity purification using phospho-N cadherin (Tyr-820) peptide.
Clonality	Polyclonal

Isotype

IgG

Applications

The Abpromise guarantee

Our **Abpromise guarantee** covers the use of ab76059 in the following tested applications.

The application notes include recommended starting dilutions; optimal dilutions/concentrations should be determined by the end user.

Application	Abreviews	Notes
WB		1/1000. Predicted molecular weight: 100 kDa.

Target

Function

Cadherins are calcium dependent cell adhesion proteins. They preferentially interact with themselves in a homophilic manner in connecting cells; cadherins may thus contribute to the sorting of heterogeneous cell types. CDH2 may be involved in neuronal recognition mechanism. In hippocampal neurons, may regulate dendritic spine density.

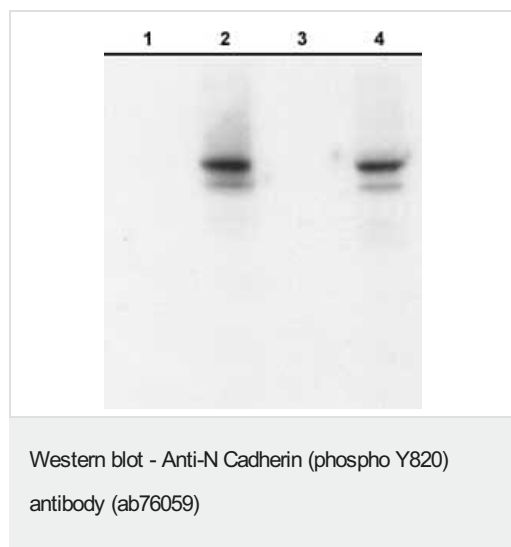
Sequence similarities

Contains 5 cadherin domains.

Cellular localization

Cell membrane.

Images



All lanes : Anti-N Cadherin (phospho Y820) antibody (ab76059) at 1/1000 dilution

Lane 1 : Human endothelial cells untreated

Lane 2 : Human endothelial cells treated with pervanadate (1 mM) for 30 min

Lane 3 : Human endothelial cells treated with pervanadate (1 mM) for 30 min with phospho-N-cadherin (Tyr-820) peptide

Lane 4 : Human endothelial cells treated with pervanadate (1 mM) for 30 min with phospho-N-cadherin (Tyr-860) peptide

Predicted band size: 100 kDa

Observed band size: 130 kDa

Please note: All products are "FOR RESEARCH USE ONLY. NOT FOR USE IN DIAGNOSTIC PROCEDURES"

Our Abpromise to you: Quality guaranteed and expert technical support

- Replacement or refund for products not performing as stated on the datasheet
- Valid for 12 months from date of delivery

- Response to your inquiry within 24 hours
- We provide support in Chinese, English, French, German, Japanese and Spanish
- Extensive multi-media technical resources to help you
- We investigate all quality concerns to ensure our products perform to the highest standards

If the product does not perform as described on this datasheet, we will offer a refund or replacement. For full details of the Abpromise, please visit <https://www.abcam.com/abpromise> or contact our technical team.

Terms and conditions

- Guarantee only valid for products bought direct from Abcam or one of our authorized distributors