

Product datasheet

Anti-N epsilon gamma glutamyl Lysine antibody [81D4] ab424

★★★★★ [2 Abreviews](#) [17 References](#) [2 Images](#)

Overview

Product name	Anti-N epsilon gamma glutamyl Lysine antibody [81D4]
Description	Mouse monoclonal [81D4] to N epsilon gamma glutamyl Lysine
Host species	Mouse
Tested applications	Suitable for: IHC-P, ELISA, IHC-Fr
Species reactivity	Reacts with: Species independent
Immunogen	Synthetic isopeptide.
General notes	<p>The ability of this antibody to fix complement is unknown. The isopeptide may be purchased from Bachem Catalog number G-1970.</p> <p>The Life Science industry has been in the grips of a reproducibility crisis for a number of years. Abcam is leading the way in addressing this with our range of recombinant monoclonal antibodies and knockout edited cell lines for gold-standard validation. Please check that this product meets your needs before purchasing.</p> <p>If you have any questions, special requirements or concerns, please send us an inquiry and/or contact our Support team ahead of purchase. Recommended alternatives for this product can be found below, along with publications, customer reviews and Q&As</p>

Properties

Form	Liquid
Storage instructions	Shipped at 4°C. Store at +4°C short term (1-2 weeks). Upon delivery aliquot. Store at -20°C or -80°C. Avoid freeze / thaw cycle.
Storage buffer	Constituents: 2% Sucrose, 5.8% Sodium chloride, Phosphate Buffer
Purity	Protein A purified
Clonality	Monoclonal
Clone number	81D4
Myeloma	unknown
Isotype	IgM
Light chain type	kappa

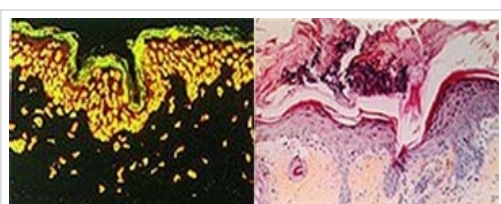
Applications

The Abpromise guarantee Our **Abpromise guarantee** covers the use of ab424 in the following tested applications.

The application notes include recommended starting dilutions; optimal dilutions/concentrations should be determined by the end user.

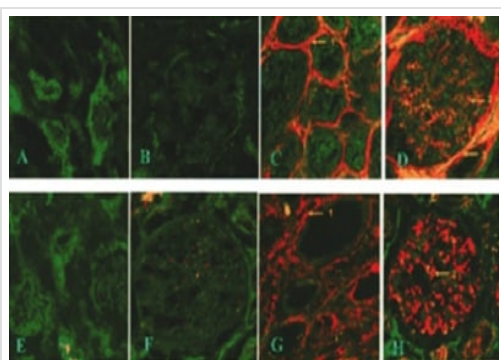
Application	Abreviews	Notes
IHC-P		1/50 - 1/800.
ELISA		Use at an assay dependent concentration.
IHC-Fr	★★★★★ (1)	1/50 - 1/800.

Images



ab424 staining N epsilon gamma glutamyl Lysine in skin tissue sections.

Immunohistochemistry (Formalin/PFA-fixed paraffin-embedded sections) - Anti-N epsilon gamma glutamyl Lysine antibody [81D4] (ab424)



ab424 staining N epsilon gamma glutamyl Lysine in kidney tissue sections by Immunohistochemistry (Frozen sections). Sections A through D were stained for insoluble tissue transglutaminase, while E through H were stained for N epsilon gamma glutamyl Lysine crosslink. A, B, E, F were control kidneys; C, D, G, H were diseased kidneys showing increased staining in the expanded interstitium, the mesangium and periglomerular.

Immunohistochemistry (Frozen sections) - Anti-N epsilon gamma glutamyl Lysine antibody [81D4] (ab424)

Please note: All products are "FOR RESEARCH USE ONLY. NOT FOR USE IN DIAGNOSTIC PROCEDURES"

Our Abpromise to you: Quality guaranteed and expert technical support

- Replacement or refund for products not performing as stated on the datasheet
- Valid for 12 months from date of delivery

- Response to your inquiry within 24 hours
- We provide support in Chinese, English, French, German, Japanese and Spanish
- Extensive multi-media technical resources to help you
- We investigate all quality concerns to ensure our products perform to the highest standards

If the product does not perform as described on this datasheet, we will offer a refund or replacement. For full details of the Abpromise, please visit <https://www.abcam.com/abpromise> or contact our technical team.

Terms and conditions

- Guarantee only valid for products bought direct from Abcam or one of our authorized distributors