

Product datasheet

Anti-NALP5 antibody ab105324

[2 Images](#)

Overview

Product name	Anti-NALP5 antibody
Description	Rabbit polyclonal to NALP5
Host species	Rabbit
Tested applications	Suitable for: IHC-P, ICC/IF
Species reactivity	Reacts with: Human
Immunogen	A Synthetic peptide (14 amino acid) from near the C terminus of Human NALP5 (NP_703148).
General notes	<p>The Life Science industry has been in the grips of a reproducibility crisis for a number of years. Abcam is leading the way in addressing this with our range of recombinant monoclonal antibodies and knockout edited cell lines for gold-standard validation. Please check that this product meets your needs before purchasing.</p> <p>If you have any questions, special requirements or concerns, please send us an inquiry and/or contact our Support team ahead of purchase. Recommended alternatives for this product can be found below, along with publications, customer reviews and Q&As</p>

Properties

Form	Liquid
Storage instructions	Shipped at 4°C. Store at +4°C.
Storage buffer	pH: 7.2 Preservative: 0.02% Sodium azide Constituent: PBS
Purity	Immunogen affinity purified
Clonality	Polyclonal
Isotype	IgG

Applications

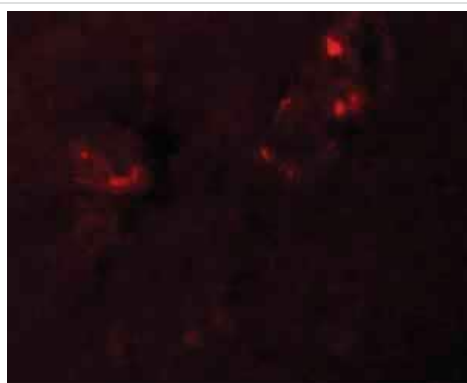
The Abpromise guarantee Our **Abpromise guarantee** covers the use of ab105324 in the following tested applications. The application notes include recommended starting dilutions; optimal dilutions/concentrations should be determined by the end user.

Application	Abreviews	Notes
IHC-P		Use at an assay dependent concentration.
ICC/IF		Use a concentration of 20 µg/ml.

Target

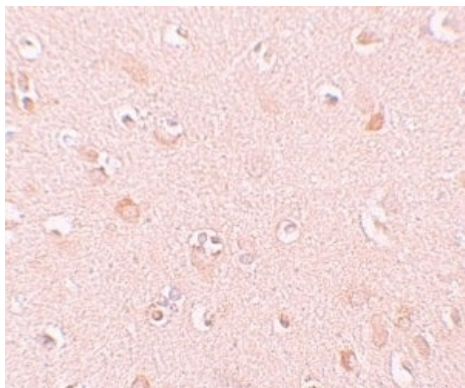
Function	As a member of the subcortical maternal complex (SCMC), plays an essential role for zygotes to progress beyond the first embryonic cell divisions.
Tissue specificity	Oocyte-specific.
Sequence similarities	Belongs to the NLRP family. Contains 13 LRR (leucine-rich) repeats. Contains 1 NACHT domain. Contains 1 pyrin domain.
Cellular localization	Mitochondrion. Nucleus, nucleolus. Cytoplasm. In the subcortical cytoplasm of early embryos from the 1-cell to the blastocyst stages. From the 2-cell stage, still detected in the subcortex, but excluded from cell-cell contact regions (By similarity).

Images



Immunofluorescence of NALP5 in Human brain tissue with ab105324 at 20 µg/mL.

Immunocytochemistry/ Immunofluorescence - Anti-NALP5 antibody (ab105324)



Immunohistochemistry of Human brain tissue with ab105324 at 10 $\mu\text{g/mL}$.

Immunohistochemistry (Formalin/PFA-fixed paraffin-embedded sections) - Anti-NALP5 antibody (ab105324)

Please note: All products are "FOR RESEARCH USE ONLY. NOT FOR USE IN DIAGNOSTIC PROCEDURES"

Our Abpromise to you: Quality guaranteed and expert technical support

- Replacement or refund for products not performing as stated on the datasheet
- Valid for 12 months from date of delivery
- Response to your inquiry within 24 hours
- We provide support in Chinese, English, French, German, Japanese and Spanish
- Extensive multi-media technical resources to help you
- We investigate all quality concerns to ensure our products perform to the highest standards

If the product does not perform as described on this datasheet, we will offer a refund or replacement. For full details of the Abpromise, please visit <https://www.abcam.com/abpromise> or contact our technical team.

Terms and conditions

- Guarantee only valid for products bought direct from Abcam or one of our authorized distributors