

Product datasheet

Anti-Nanog antibody ab106465

[15 References](#) [3 Images](#)

Overview

Product name	Anti-Nanog antibody
Description	Rabbit polyclonal to Nanog
Host species	Rabbit
Specificity	At least two isoforms of Nanog are known to exist; ab106465 will detect both.
Tested applications	Suitable for: IHC-P, ICC/IF, WB
Species reactivity	Reacts with: Human
Immunogen	A 19 amino acid synthetic peptide near the center of Human Nanog (EAW88651).
Positive control	Human spleen tissue lysate; Human spleen tissue
General notes	<p>The Life Science industry has been in the grips of a reproducibility crisis for a number of years. Abcam is leading the way in addressing this with our range of recombinant monoclonal antibodies and knockout edited cell lines for gold-standard validation. Please check that this product meets your needs before purchasing.</p> <p>If you have any questions, special requirements or concerns, please send us an inquiry and/or contact our Support team ahead of purchase. Recommended alternatives for this product can be found below, along with publications, customer reviews and Q&As</p>

Properties

Form	Liquid
Storage instructions	Shipped at 4°C. Store at 4°C (stable for up to 12 months).
Storage buffer	pH: 7.2 Preservative: 0.02% Sodium azide Constituent: PBS
Purity	Immunogen affinity purified
Clonality	Polyclonal
Isotype	IgG

Applications

The **Abpromise guarantee** Our **Abpromise guarantee** covers the use of ab106465 in the following tested applications.

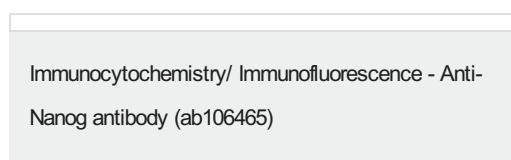
The application notes include recommended starting dilutions; optimal dilutions/concentrations should be determined by the end user.

Application	Abreviews	Notes
IHC-P		Use a concentration of 5 µg/ml.
ICC/IF		Use a concentration of 20 µg/ml.
WB		Use a concentration of 1 - 2 µg/ml. Predicted molecular weight: 35 kDa.

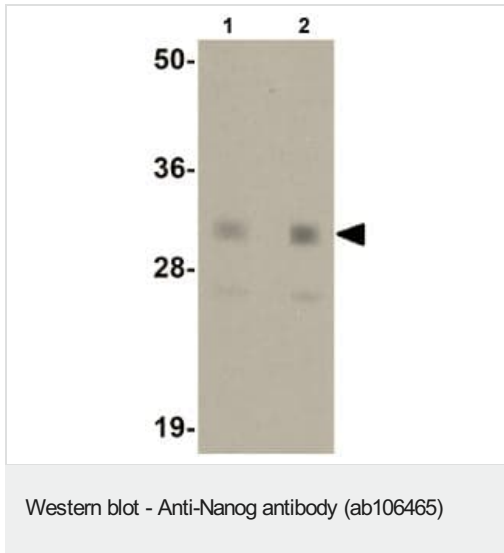
Target

Function	Transcription regulator involved in inner cell mass and embryonic stem (ES) cells proliferation and self-renewal. Imposes pluripotency on ES cells and prevents their differentiation towards extraembryonic endoderm and trophoctoderm lineages. Blocks bone morphogenetic protein-induced mesoderm differentiation of ES cells by physically interacting with SMAD1 and interfering with the recruitment of coactivators to the active SMAD transcriptional complexes (By similarity). Acts as a transcriptional activator or repressor (By similarity). Binds optimally to the DNA consensus sequence 5'-TAAT[GT][GT]-3' or 5'-[CG][GA][CG]C[GC]ATTAN[GC]-3' (By similarity). When overexpressed, promotes cells to enter into S phase and proliferation.
Tissue specificity	Expressed in testicular carcinoma and derived germ cell tumors (at protein level). Expressed in fetal gonads, ovary and testis. Also expressed in ovary teratocarcinoma cell line and testicular embryonic carcinoma. Not expressed in many somatic organs and oocytes.
Sequence similarities	Belongs to the Nanog homeobox family. Contains 1 homeobox DNA-binding domain.
Developmental stage	Expressed in embryonic stem (ES) and carcinoma (EC) cells. Expressed in inner cell mass (ICM) of the blastocyst and gonocytes between 14 and 19 weeks of gestation (at protein level). Not expressed in oocytes, unfertilized oocytes, 2-16 cell embryos and early morula (at protein level). Expressed in embryonic stem cells (ES). Expression decreases with ES differentiation.
Cellular localization	Nucleus.

Images



Immunofluorescence of NANOG in Human Spleen cells using ab106465 at 20 ug/ml.



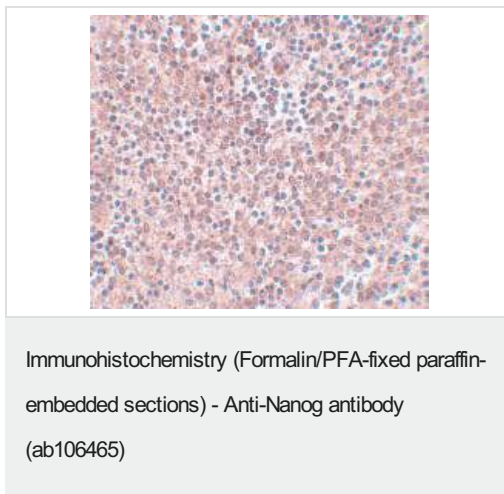
Lane 1 : Anti-Nanog antibody (ab106465) at 1 µg/ml

Lane 2 : Anti-Nanog antibody (ab106465) at 2 µg/ml

All lanes : Human spleen tissue lysate

Lysates/proteins at 15 µg per lane.

Predicted band size: 35 kDa



ab106465, at 5 µg/ml, staining Nanog in Human spleen tissue by Immunohistochemistry.

Please note: All products are "FOR RESEARCH USE ONLY. NOT FOR USE IN DIAGNOSTIC PROCEDURES"

Our Abpromise to you: Quality guaranteed and expert technical support

- Replacement or refund for products not performing as stated on the datasheet
- Valid for 12 months from date of delivery
- Response to your inquiry within 24 hours
- We provide support in Chinese, English, French, German, Japanese and Spanish
- Extensive multi-media technical resources to help you
- We investigate all quality concerns to ensure our products perform to the highest standards

If the product does not perform as described on this datasheet, we will offer a refund or replacement. For full details of the Abpromise, please visit <https://www.abcam.com/abpromise> or contact our technical team.

Terms and conditions

- Guarantee only valid for products bought direct from Abcam or one of our authorized distributors