


Product datasheet

Anti-NARG1 antibody ab65107

[2 Images](#)

Overview

Product name	Anti-NARG1 antibody
Description	Rabbit polyclonal to NARG1
Host species	Rabbit
Tested applications	Suitable for: WB, ICC/IF
Species reactivity	Reacts with: Human Predicted to work with: Mouse 
Immunogen	Synthetic peptide (Human) from an internal sequence.
Positive control	Extracts from HUVEC cells.
General notes	<p>The Life Science industry has been in the grips of a reproducibility crisis for a number of years. Abcam is leading the way in addressing this with our range of recombinant monoclonal antibodies and knockout edited cell lines for gold-standard validation. Please check that this product meets your needs before purchasing.</p> <p>If you have any questions, special requirements or concerns, please send us an inquiry and/or contact our Support team ahead of purchase. Recommended alternatives for this product can be found below, along with publications, customer reviews and Q&As</p>

Properties

Form	Liquid
Storage instructions	Shipped at 4°C. Store at -20°C. Stable for 12 months at -20°C.
Storage buffer	pH: 7.40 Preservative: 0.02% Sodium azide Constituents: PBS, 50% Glycerol (glycerin, glycerine), 0.87% Sodium chloride
Purity	Immunogen affinity purified
Purification notes	The antibody was affinity purified from rabbit antiserum by affinity chromatography using epitope specific immunogen.
Clonality	Polyclonal
Isotype	IgG

Applications

Applications

The Abpromise guarantee Our **Abpromise guarantee** covers the use of ab65107 in the following tested applications. The application notes include recommended starting dilutions; optimal dilutions/concentrations should be determined by the end user.

Application	Abreviews	Notes
WB		1/500 - 1/1000. Detects a band of approximately 101 kDa (predicted molecular weight: 101 kDa).
ICC/IF		Use a concentration of 1 - 5 µg/ml.

Target

Function

The NAA10-NAA15 complex displays alpha (N-terminal) acetyltransferase activity that may be important for vascular, hematopoietic and neuronal growth and development. Required to control retinal neovascularization in adult ocular endothelial cells. In complex with XRCC6 and XRCC5 (Ku80), up-regulates transcription from the osteocalcin promoter.

Tissue specificity

Expressed at high levels in testis and in ocular endothelial cells. Also found in brain (corpus callosum), heart, colon, bone marrow and at lower levels in most adult tissues, including thyroid, liver, pancreas, mammary and salivary glands, lung, ovary, urogenital system and upper gastrointestinal tract. Overexpressed in gastric cancer, in papillary thyroid carcinomas and in a Burkitt lymphoma cell line (Daudi). Specifically suppressed in abnormal proliferating blood vessels in eyes of patients with proliferative diabetic retinopathy.

Sequence similarities

Contains 8 TPR repeats.

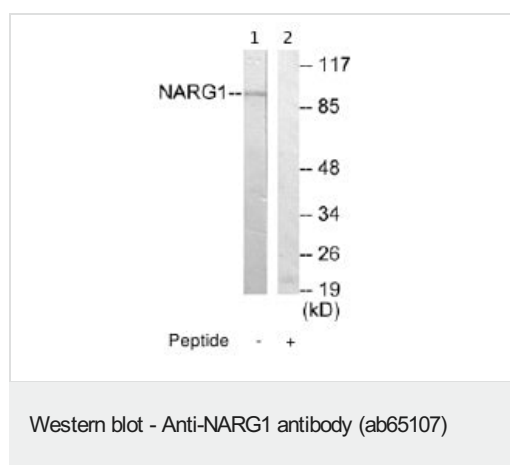
Post-translational modifications

Cleaved by caspases during apoptosis, resulting in a stable 35 kDa fragment.

Cellular localization

Cytoplasm. Nucleus. Mainly cytoplasmic, nuclear in some cases. Present in the free cytosolic and cytoskeleton-bound polysomes, but not in the membrane-bound polysomes.

Images



All lanes : Anti-NARG1 antibody (ab65107) at 1/500 dilution

Lane 1 : extracts from HUVEC cells

Lane 2 : extracts from HUVEC cells with immunising peptide at 5 µg

Lysates/proteins at 5 µg per lane.

Predicted band size: 101 kDa

Observed band size: 101 kDa

Immunocytochemistry/ Immunofluorescence - Anti-NARG1 antibody (ab65107)

ICC/IF image of ab65107 stained HeLa cells. The cells were 100% methanol fixed (5 min) and then incubated in 1%BSA / 10% normal goat serum / 0.3M glycine in 0.1% PBS-Tween for 1h to permeabilise the cells and block non-specific protein-protein interactions. The cells were then incubated with the antibody (ab65107, 1µg/ml) overnight at +4°C. The secondary antibody (green) was Alexa Fluor® 488 goat anti-rabbit IgG (H+L) used at a 1/1000 dilution for 1h. Alexa Fluor® 594 WGA was used to label plasma membranes (red) at a 1/200 dilution for 1h. DAPI was used to stain the cell nuclei (blue) at a concentration of 1.43µM.

Please note: All products are "FOR RESEARCH USE ONLY. NOT FOR USE IN DIAGNOSTIC PROCEDURES"

Our Abpromise to you: Quality guaranteed and expert technical support

- Replacement or refund for products not performing as stated on the datasheet
- Valid for 12 months from date of delivery
- Response to your inquiry within 24 hours

- We provide support in Chinese, English, French, German, Japanese and Spanish
- Extensive multi-media technical resources to help you
- We investigate all quality concerns to ensure our products perform to the highest standards

If the product does not perform as described on this datasheet, we will offer a refund or replacement. For full details of the Abpromise, please visit <https://www.abcam.com/abpromise> or contact our technical team.

Terms and conditions

- Guarantee only valid for products bought direct from Abcam or one of our authorized distributors