

Product datasheet

Anti-NBEAL2 antibody [EPR14501(B)] - N-terminal ab187162

Recombinant RabMAb

★★★★☆ [2 Abreviews](#) [1 References](#) [2 Images](#)

Overview

| | |
|----------------------------|--|
| Product name | Anti-NBEAL2 antibody [EPR14501(B)] - N-terminal |
| Description | Rabbit monoclonal [EPR14501(B)] to NBEAL2 - N-terminal |
| Host species | Rabbit |
| Tested applications | Suitable for: WB |
| Species reactivity | Reacts with: Human |
| Immunogen | Synthetic peptide. This information is proprietary to Abcam and/or its suppliers. |
| Positive control | Human platelet lysate. |
| General notes | <p>This product is a recombinant monoclonal antibody, which offers several advantages including:</p> <ul style="list-style-type: none">- High batch-to-batch consistency and reproducibility- Improved sensitivity and specificity- Long-term security of supply- Animal-free production <p>For more information see here.</p> <p>Our RabMAb[®] technology is a patented hybridoma-based technology for making rabbit monoclonal antibodies. For details on our patents, please refer to RabMAb[®] patents.</p> |

Properties

| | |
|-----------------------------|---|
| Form | Liquid |
| Storage instructions | Shipped at 4°C. Store at +4°C short term (1-2 weeks). Upon delivery aliquot. Store at -20°C long term. Avoid freeze / thaw cycle. |
| Storage buffer | pH: 7.2 Preservative: 0.01% Sodium azide Constituents: 59% PBS, 40% Glycerol (glycerin, glycerine), 0.05% BSA |
| Purity | Protein A purified |
| Clonality | Monoclonal |
| Clone number | EPR14501(B) |
| Isotype | IgG |

Applications

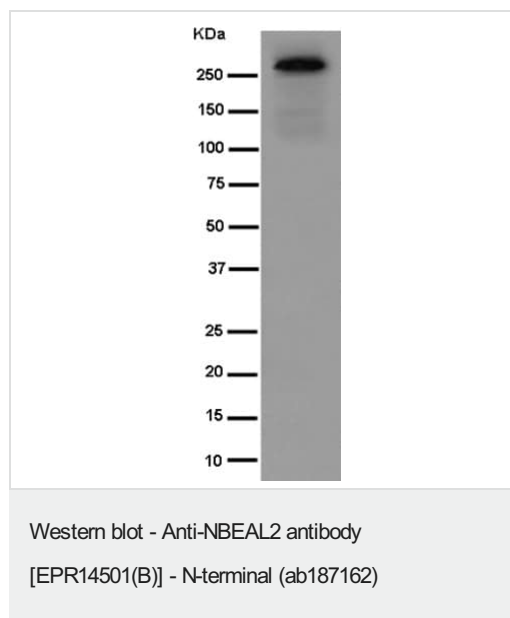
The Abpromise guarantee Our **Abpromise guarantee** covers the use of ab187162 in the following tested applications. The application notes include recommended starting dilutions; optimal dilutions/concentrations should be determined by the end user.

| Application | Abreviews | Notes |
|-------------|-----------|--|
| WB | | 1/1000. Detects a band of approximately 303 kDa (predicted molecular weight: 303 kDa). |

Target

| | |
|-------------------------------|---|
| Function | Probably involved in thrombopoiesis. Plays a role in the development or secretion of alpha-granules, that contain several growth factors important for platelet biogenesis. |
| Tissue specificity | Expressed in megakaryocytes. |
| Involvement in disease | Gray platelet syndrome |
| Sequence similarities | Belongs to the WD repeat neurobeachin family. Contains 1 BEACH domain. Contains 5 WD repeats. |
| Cellular localization | Endoplasmic reticulum. |

Images



Anti-NBEAL2 antibody [EPR14501(B)] - N-terminal (ab187162) at 1/1000 dilution + Human platelet lysate at 10 µg

Secondary

Anti-Rabbit IgG (HRP), specific to the non-reduced form of IgG at 1/1000 dilution

Predicted band size: 303 kDa

Why choose a recombinant antibody?



Research with confidence
Consistent and reproducible results



Long-term and scalable supply
Recombinant technology



Success from the first experiment
Confirmed specificity



Ethical standards compliant
Animal-free production

Anti-NBEAL2 antibody [EPR14501(B)] - N-terminal
(ab187162)

Please note: All products are "FOR RESEARCH USE ONLY. NOT FOR USE IN DIAGNOSTIC PROCEDURES"

Our Abpromise to you: Quality guaranteed and expert technical support

- Replacement or refund for products not performing as stated on the datasheet
- Valid for 12 months from date of delivery
- Response to your inquiry within 24 hours
- We provide support in Chinese, English, French, German, Japanese and Spanish
- Extensive multi-media technical resources to help you
- We investigate all quality concerns to ensure our products perform to the highest standards

If the product does not perform as described on this datasheet, we will offer a refund or replacement. For full details of the Abpromise, please visit <https://www.abcam.com/abpromise> or contact our technical team.

Terms and conditions

- Guarantee only valid for products bought direct from Abcam or one of our authorized distributors